

Isticmaalka Tijaabooyinka ee Xulashada Aqbalaada Dugsiyada

Lorrie A. Shepard
Jaamacada Colorado Boulder

Kulanka Guddi Hawleedka Imtixaanka Dugsiga
Meey 21, 2021



School of Education
UNIVERSITY OF COLORADO **BOULDER**



Tixgelinnada Tartanka

- Si looga qaybqaato duruufaha tacliinta ku adag, ardayda waa inay lahaadaan shuruud ah aqoon iyo xirfado. **(adag)**
- Tijaabooytinka caadiga ah waxay la xiriiraan dakhliga qoyska waxayna leeyihiin saameyn aad u kala fog marka loo eego xulashada fasalada oo keliya. **(kala duwanaanta)**
- **Ogolaanshaha kuliyada, buundooyinka ayaa ka saadaal badan tijaabooyinkamaxaa yeelay darajooyinku waa isugeyn iyo darajooyinku waxay muujinayaan dadaal iyo sidoo kale**



Cashirada SAT/ACT Aqbalaadyada Kuliyaada

- HSGPA & SAT cabbiraan u diyaarsanaanta tacliinta & Saadaaliyaan guusha ardayga.
(nin cusub gpa & qalin-jebinta)
- SAT lagu daray HSGPA waxay hagaajinaysaa saadaasha kuliyaada GPA ee 15%.
- **Dibcaha tijaabada ka tarjuma fursadaha HS aan sinnayn. (+ caqli wanaagga tijaabada, udiyaar garowga tijaabada, hanjabaada khaldan)**
- **Marka la eego iswaafajinta saadaasha saxan, tijaabooyinka waa in aan waligood loo isticmaalin sidii inay yihiin cabirro hagaagsan oo**



Tusaalaha Mala awaalka ee Qiyaasta Mudnaanta ee Qumman

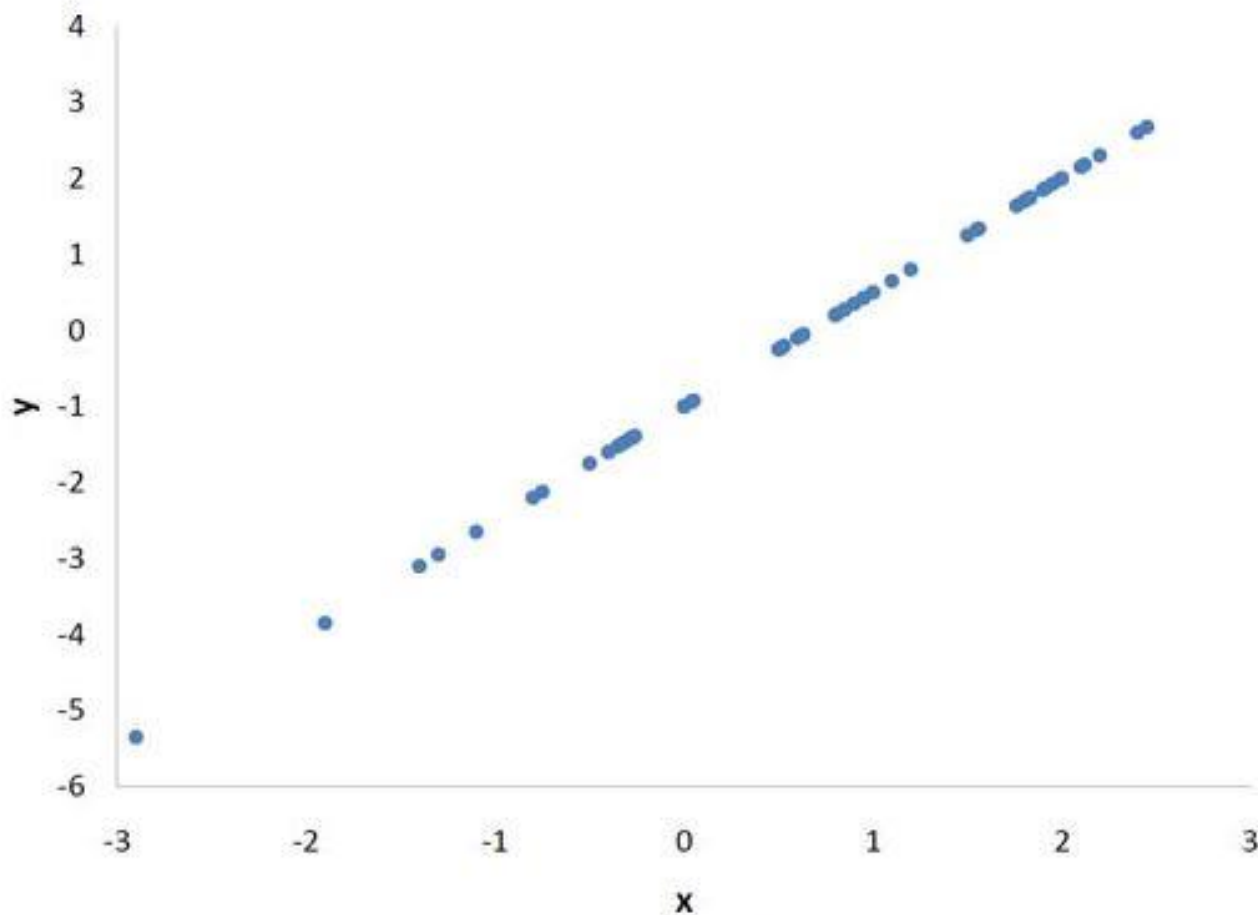
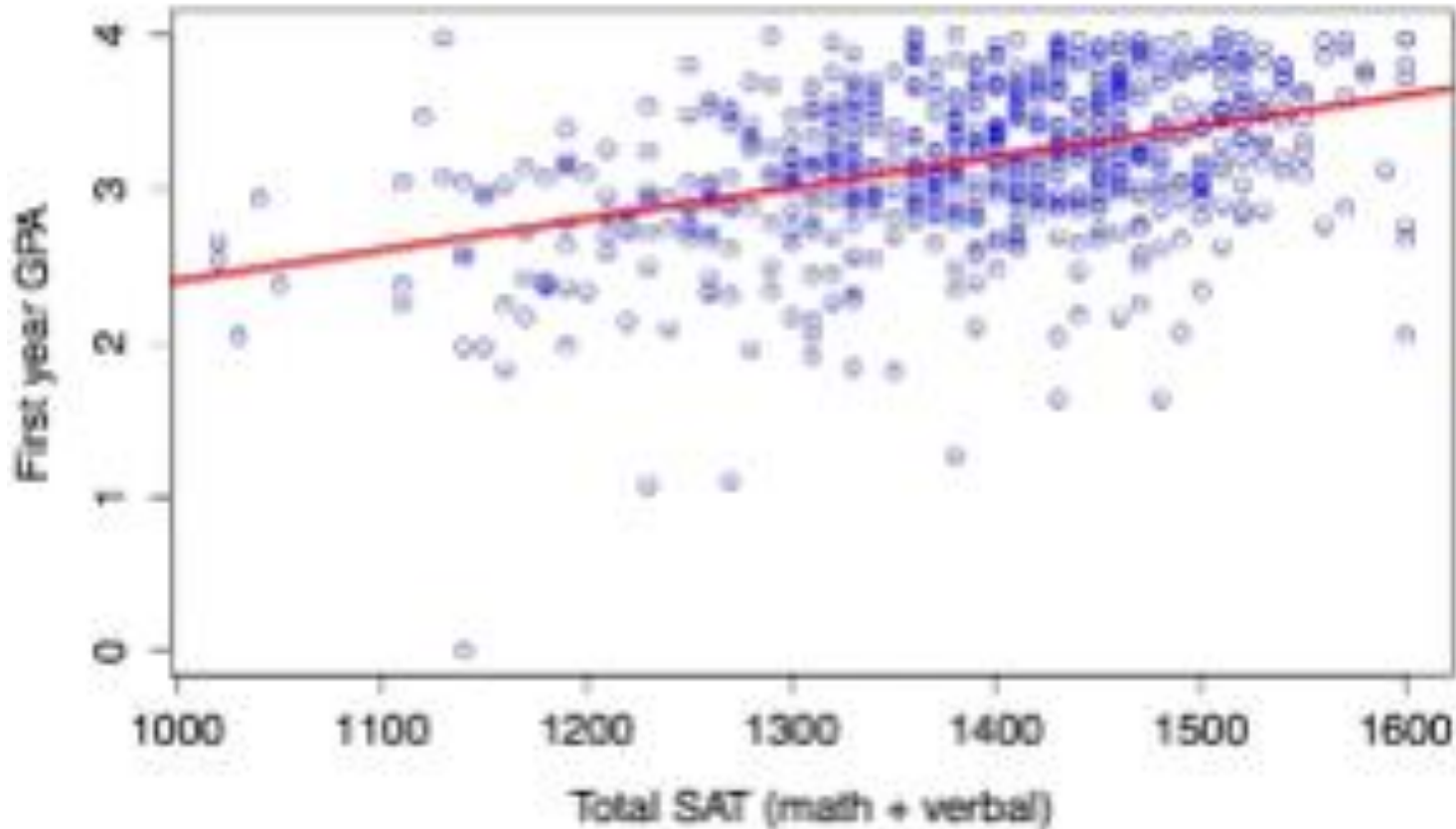


Figure 1. A perfect positive linear relationship, $r = 1$.



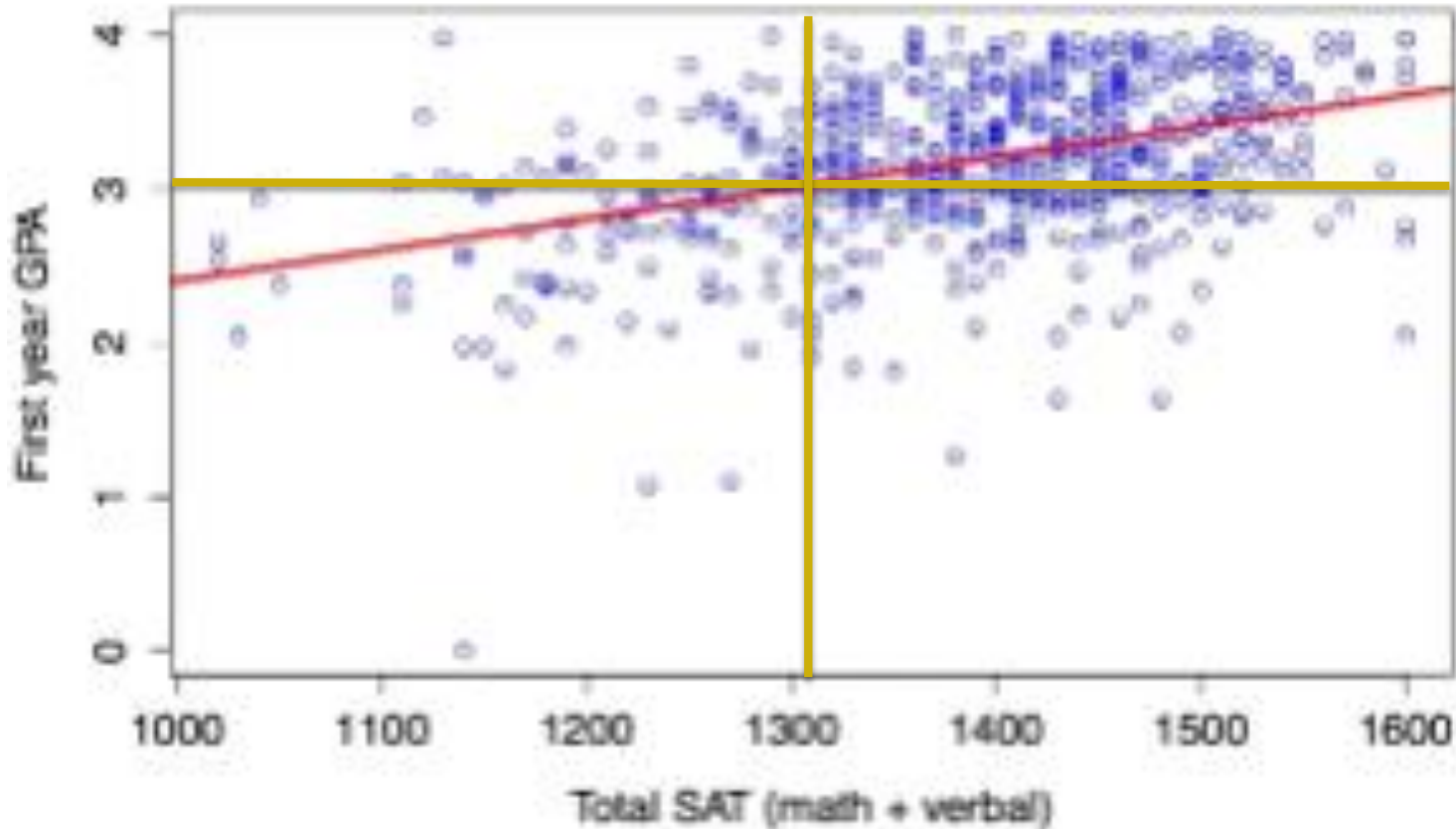
Wadarta SAT loogu saadaalin jiray Kuliyadda GPA

Scatter Plot of First Year GPA vs. SAT Score



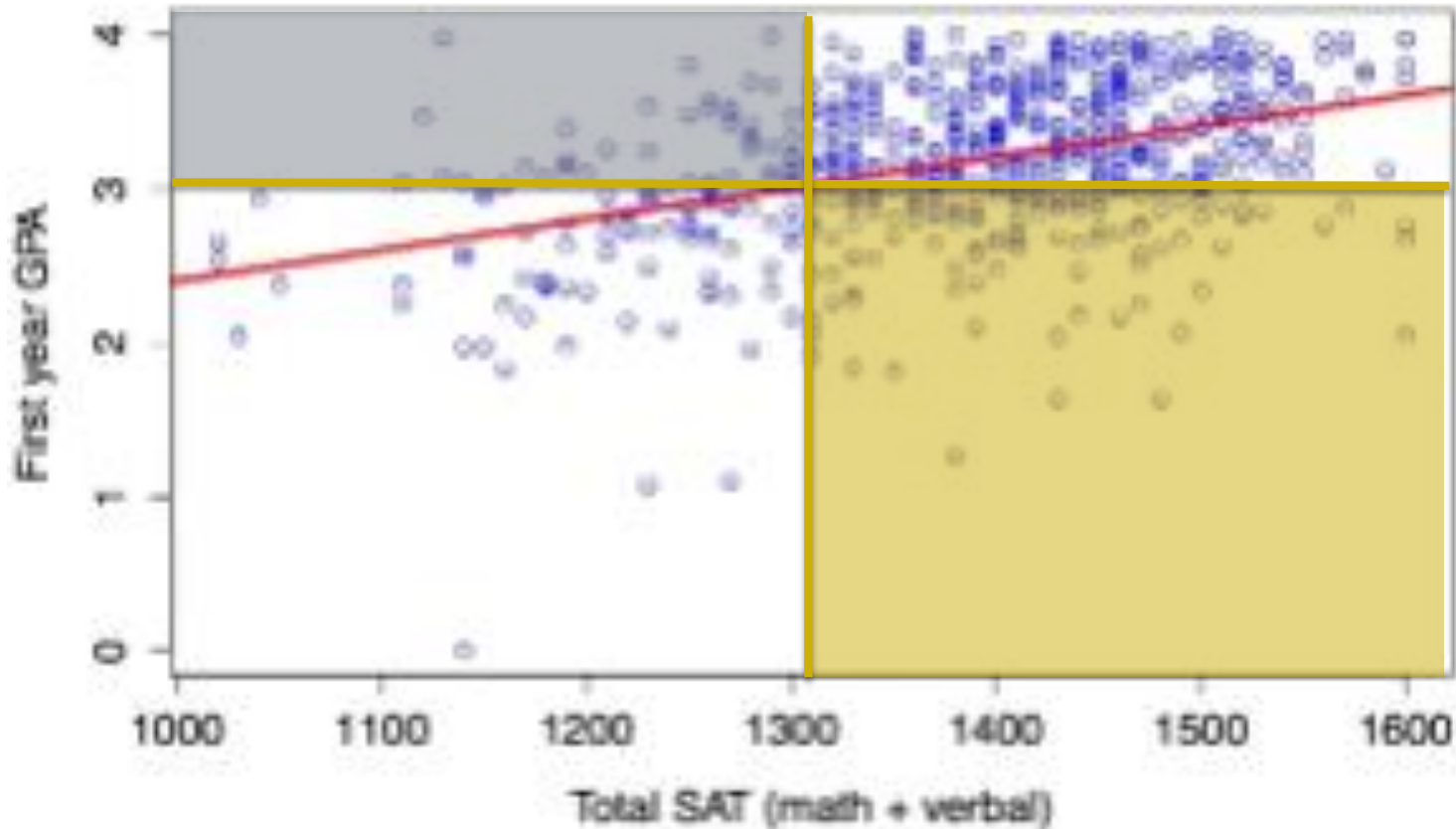
Wadarta SAT loogu saadaalin jiray Kuliyadda GPA

Scatter Plot of First Year GPA vs. SAT Score



Wadarta SAT loogu saadaalin jiray Kuliyaadda GPA

Scatter Plot of First Year GPA vs. SAT Score



Laba Dhibcood oo Ku saabsan Tijaabooyinka NWEA MAP

- Adeegsiga Shayga Kaladuwan Shaqeynaya (DIF) iyo tirada Eexda Shayga aanan dhigin eex tijaabo oo bilaash ah. Sababtoo ah wadarta dhibcaha tijaabada waxaa loo isticmaalaa bartilmaameedka, DIF kaliya ayaa aqoonsan kara walxaha buunbuunin kara kala duwanaanshaha kooxda.
- NWEA MAP waxay isticmaashaa dhammaan xulashooyinka kala duwan ama walxaha jawaabta la doortay. Sidaa darteed, ma cabbiri karo dhinacyada Qaab-dhismeedka Manhajka Massachusetts sida qaabaynta iyo doodda.

