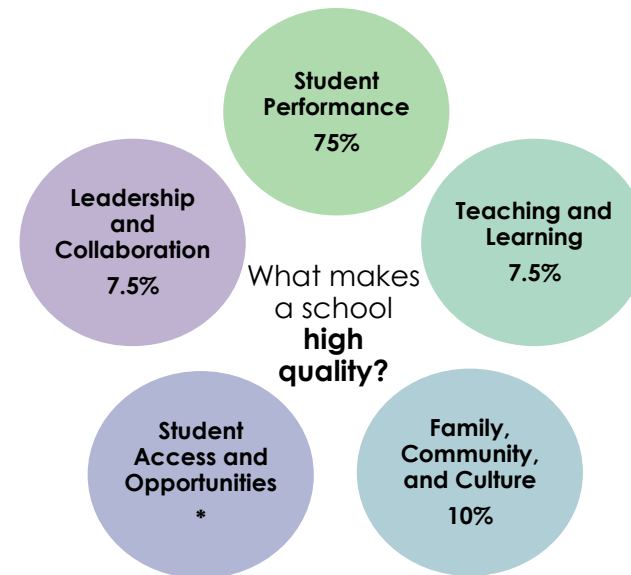




2018-19 BPS SCHOOL QUALITY REPORT: Overview

School:	English High
School Level:	High School
School Quality Score:	58
Tier:	4*

* Schools that are DESE Level 4 or 5 are automatically given a Tier 4 based on the override provision of the School Quality Framework policy.

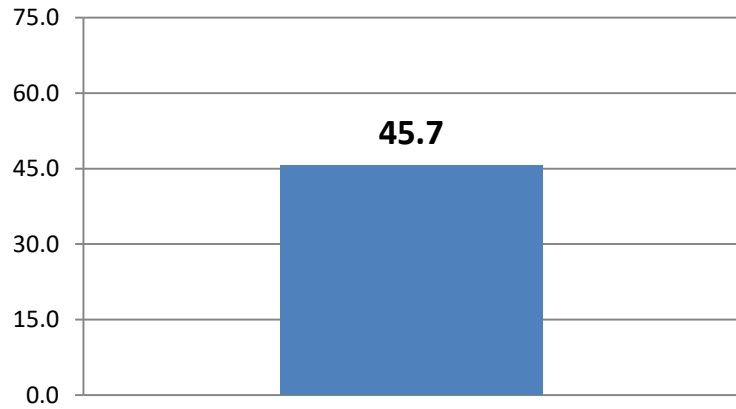


A school's quality tier is based on how a school performs on different metrics in 5 domain areas. Each domain area has a specific set of outcomes and metrics depending on school level.

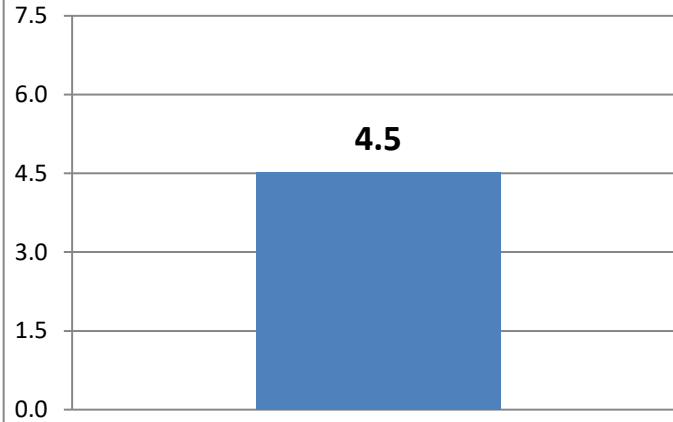
Quality tiers are used for the school choice process.

In this measure, all schools have the ability to become a Tier 1 if they continue to make progress on these priority outcomes.

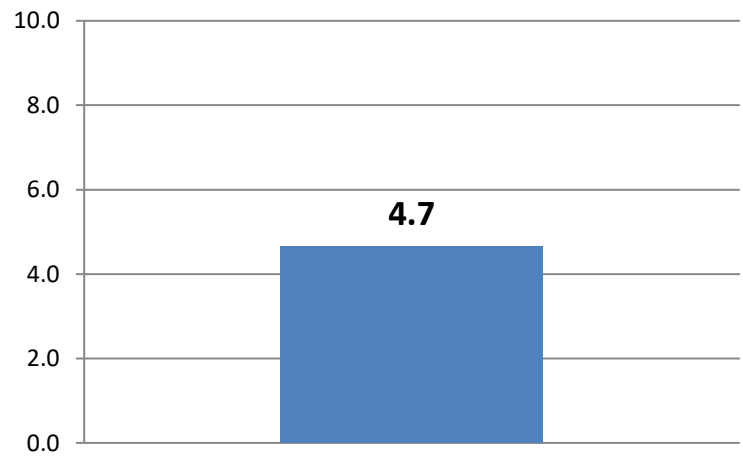
**Student Performance
(0-75)**



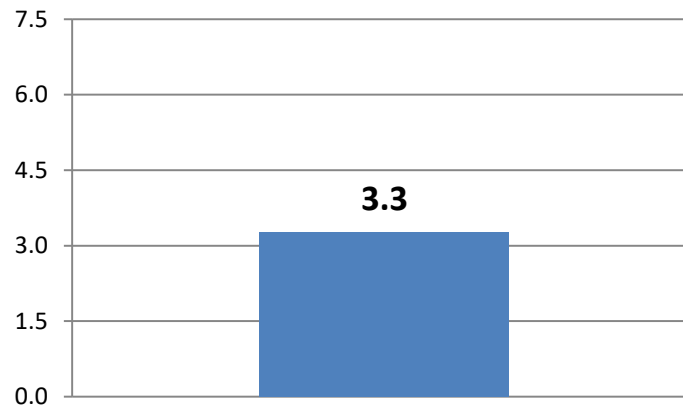
**Teaching and Learning
(0-7.5)**



Family, Community and Culture (0-10)



**Leadership and Collaboration
(0-7.5)**



Index Scores for Each Metric by Domain Translate into an Overall School Quality Tier

Index Points	Definition
100 Points	Above Target
75 Points	On Target
50 Points	Improved Below Target
25 Points	No Change
0 Points	Declined



School Quality Score	School Quality Tier
65+	1
55-65	2
45-55	3
0-45	4

There are specific metrics associated with each outcome for all domain areas. Each metric is converted into a 100-point scale based on defined targets and averaged together to compute a domain score. After each metric is given an index score, and growth, proficiency, and domain weights are applied, a school receives an overall quality score between 1-100. This approach is criterion-referenced and gives all schools the ability to reach Tier 1. Schools with 65+ points are considered Tier 1 schools.

***Metrics associated with student growth are weighed twice as much as metrics that measure student proficiency.**

Student Performance Domain

Domain	Metric	Points
Student Performance	4 year graduation rate – (All students, Black, Hispanic, Asian, White, SPED, ELL)	33.3
	5 year graduation rate – (All students, Black, Hispanic, Asian, White, SPED, ELL)	37.5
	Drop-out rate - reflects number of 9th through 12th graders who drop out each year	75.0
	Percent of student enrolled in college within 16 months of graduation	50.0
	Climate Survey Outcome 1: Student climate survey questions on goal-setting and perseverance	62.5
	Whether school is meeting proficiency targets in ELA - (All students)	75.0
	Whether school is meeting proficiency targets in ELA - Subgroups (Black, Hispanic, White, Asian)	50.0
	Whether school is meeting proficiency targets in Math - (All students)	25.0
	Whether school is meeting proficiency targets in Math - Subgroups (Black, Hispanic, White, Asian)	37.5
	Achievement gap metric - MATH	No Data
	Achievement gap metric - ELA	No Data
	% of students well below or below benchmark who move up a performance level by the end of the year on DIBELS	No Data
	Median Math SGP – (All students)	50.0
	Median ELA SGP – (All students)	75.0
	Median Math SGP – Subgroups (Black, Hispanic, Asian, White, SPED)	62.5
	Median ELA SGP – Subgroups (Black, Hispanic, Asian, White, SPED)	87.5
	Median growth percentile for students who are Proficient in Math	No Data
	Median growth percentile for students who are Proficient in ELA	No Data
	Median growth percentile for students who are Warning/Failing in Math	No Data
	Median growth percentile for students who are Warning/Failing in ELA	No Data
Median growth percentile on ACCESS for English Language Learners who are at ELD levels 1, 2, or 3.	100.0	

Growth Measures

Teaching and Learning Domain

Domain	Metric	Points
Teaching and Learning	Climate Survey Outcome 4: Parent, Teacher and Student climate survey results on whether all students are taught by highly effective, caring and committed teachers	54.2
	Climate Survey Outcome 5: Teacher Climate Survey results on whether school is led by effective instructional leader(s).	75.0
	Percentage of students that felt the school prepared them for further education, employment, and personal life after high school	50.0
	Climate Survey Outcome 6: Parent and Student Climate Survey results on preparation for the next grade	62.5

Family, Community and Culture Domain

Domain	Metric	Points
Family, Community and Culture	Climate Survey Outcome 8: Student, parent and teacher climate survey on whether school is safe, well-organized and conducive to meeting educational goals.	56.3
	Number of out-of-school suspensions per 100 students (6th Grade and Above)	62.5
	Average daily attendance	25.0
	Climate Survey Outcome 9: Student and teacher climate survey results on whether students are engaged and enthusiastic	62.5
	Climate Survey Outcome 10: Teacher and Parent climate survey results on whether schools ensure all families feel welcomes and are involved	25.0
	Family Engagement Index (School Site Councils, School Parent Councils, engagement plans, etc.)	37.5
	Climate Survey outcome 11: Parent climate survey results on whether school promotes inclusion of all students, families and community stakeholders	31.3
	% of teachers that are minority	56.3
	Climate survey outcome 12: Student and teacher climate survey results on whether school demonstrates a culture of high achievement.	62.5

Leadership and Collaboration Domain

Domain	Metric	Points
Leadership and Collaboration	Climate Survey Outcome 16: Student, Teacher and parent climate survey results on whether school leadership sets a vision for the school that actively engages the community	0.0
	Climate survey Outcome 17: Teacher climate survey results on whether school leadership creates a culture of collaboration among all staff members.	75.0
	Climate Survey Outcome 18: Parent climate survey results on whether school leadership develops clear and effective structures for communication with families and within the school community.	-
	Climate Survey Outcome 19: Student and parent climate survey results on whether school leadership builds community partnerships	-
	Teacher retention rate for proficient and exemplary teachers	25.0
	Climate Survey Outcome 20: Teacher survey results on whether School leadership retains and leverages effective teachers.	75.0