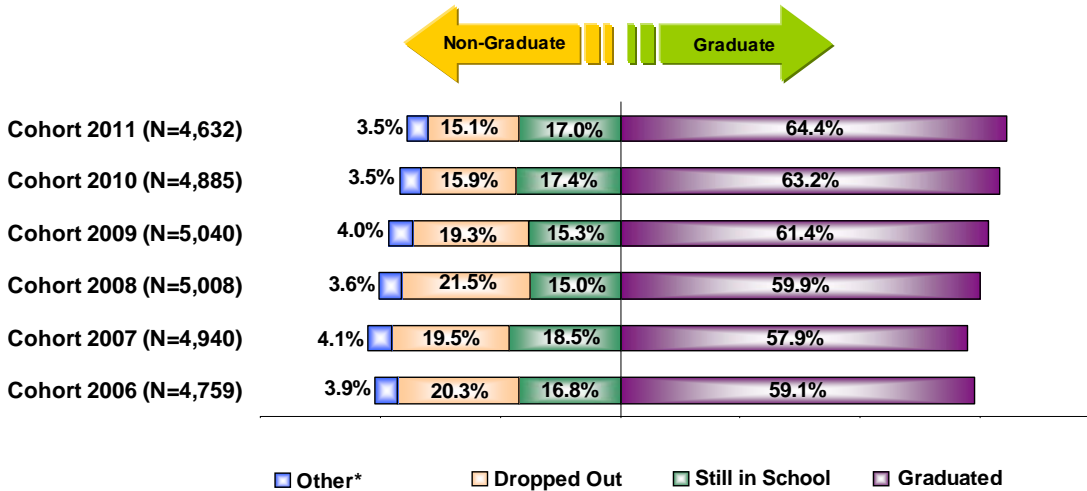


## Boston Public Schools

### 4-Year Graduation Rate By Cohort Group\*\*



\* Other: includes Non-Graduate Completers, GED and Expelled.

Note: Percentages may not total to 100% due to rounding.

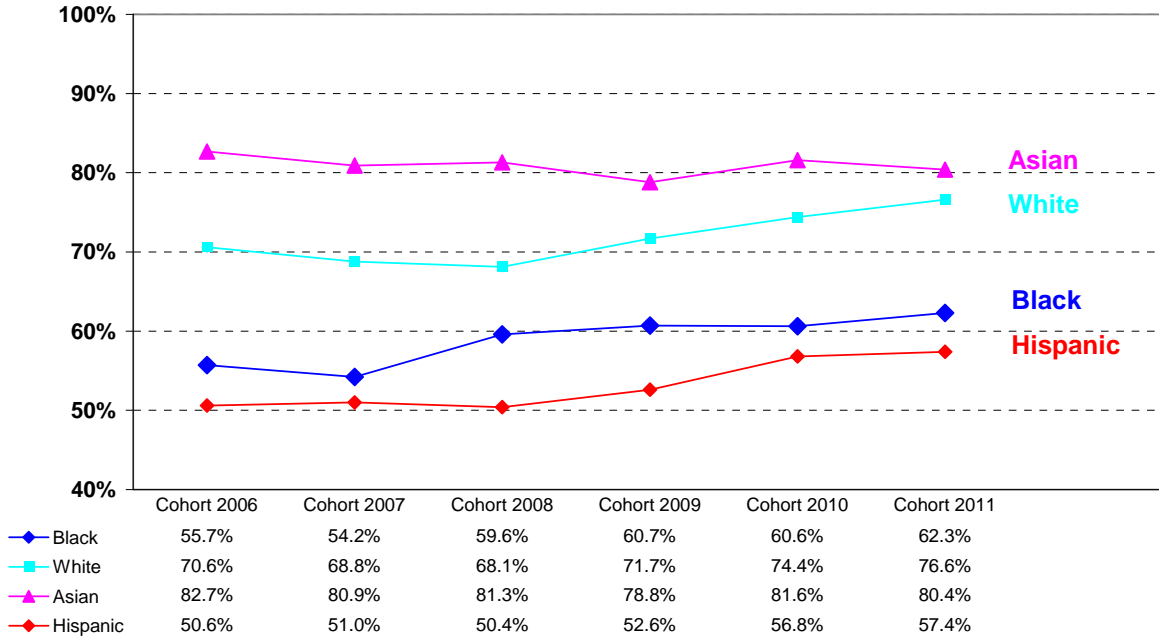
- The 4-year cohort graduation rate has steadily increased since 2007. Even with the more demanding Competency Determination<sup>1</sup> (CD) standards required by the state for graduation, students in the 2011 cohort had a 4-year graduation rate of 64.4%, a 1.2 percentage point increase compared to students in the 2010 cohort. In addition, the percentage of students still in school (17.0%) and the 4-year cohort dropout rate (15.1%) dropped 0.4 and 0.8 percentage points, respectively.

\* The 4-year graduation cohort consists of students who were 1<sup>st</sup> time 9<sup>th</sup> graders four years prior to the year of graduation; it also includes students who transferred into BPS and excludes students who transferred out of BPS and deaths during the four-year period. The status (e.g., graduated, still enrolled) is updated as of October 1 of the following school year. For example, the population for the Cohort 2011 includes students who were enrolled in BPS in grade 9 in the fall of 2007 plus transfers into BPS minus transfers out of BPS or deaths occurring through the end of SY 2010-11. The status (e.g., graduated, still enrolled) is updated as of October 1, 2011.

<sup>1</sup> In order to graduate, students must meet all local requirements, and earn a Competency Determination (CD). Students in the class of 2010 and beyond earn a CD by scoring a minimum of 240 (*Proficient or Advanced*) on the grade 10 MCAS tests in English Language Arts and Mathematics or by scoring a minimum of 220 (*Needs Improvement*) in these tests and completing an Educational Proficiency Plan (EPP). Students must also score a minimum of 220 (*Needs Improvement*) on a high school Science & Technology/Engineering MCAS test. For students in the classes of 2009 and prior, earning a CD meant scoring a 220 (*Needs Improvement*) or higher on the grade 10 MCAS ELA and Math tests only (Science CD was not required).

# Boston Public Schools

## 4-Year Graduation Rate By Race/Ethnicity



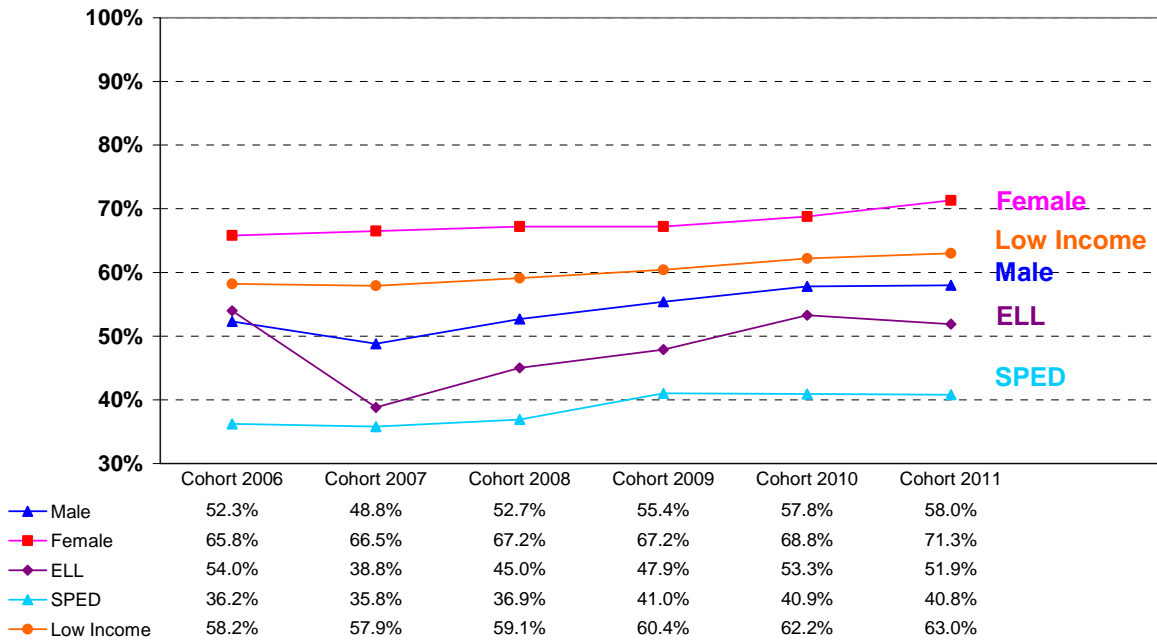
- Compared to the previous cohort, the 4-year graduation rate for students in three of the four racial/ethnic groups increased notably. The increase for White students was 2.2 percentage points; Black students saw a 1.7 point increase; and Hispanic students saw a 0.6 point gain in their graduation rate. The 4-year graduation rate for Asian students dropped 1.2 percentage points to 80.4%.
- Data from the past six cohorts show that Asian students have the highest 4-year graduation rate, while Hispanic students have the lowest.
- Four-year graduation rates have fluctuated for all racial/ethnic groups over the past six cohorts, but a steady improvement is seen since cohort 2006 for Black, White, and Hispanic students, with gains greater than 6 points for each group.

Detailed statistics by student status for all racial groups in cohorts 2006 through 2011 can be found in the Appendix.

\* The 4-year graduation cohort consists of students who were 1<sup>st</sup> time 9<sup>th</sup> graders four years prior to the year of graduation; it also includes students who transferred into BPS and excludes students who transferred out of BPS and deaths during the four-year period. The status (e.g., graduated, still enrolled) is updated as of October 1 of the following school year. For example, the population for the Cohort 2011 includes students who were enrolled in BPS in grade 9 in the fall of 2007 plus transfers into BPS minus transfers out of BPS or deaths occurring through the end of SY 2010-11. The status (e.g., graduated, still enrolled) is updated as of October 1, 2011.

# Boston Public Schools

## 4-Year Graduation Rate By Other NCLB Student Group



- Compared to the 2010 cohort, female, male, and low income students in the 2011 cohort all saw noticeable increases in their 4-year graduation rates. Specifically, the rate was up 2.5 percentage points for female students; 0.8 points for low income students; and 0.2 points for male students. The 4-year graduation rate for Special Education students (SPED), consistently the lowest among the student groups, dropped slightly (0.1 point) to 40.8%, while the 4-year graduation rate for English Language Learners (ELL) dropped 1.4 percentage points to 51.9%.
- Compared to the 2006 cohort, male, female, SPED, and low-income student groups have all seen substantial increases in their graduation rates (close to 5 points or more).

Detailed statistics by student status for all student subgroups in cohorts 2006 through 2011 are presented in the Appendix.

\* The 4-year graduation cohort consists of students who were 1<sup>st</sup> time 9<sup>th</sup> graders four years prior to the year of graduation; it also includes students who transferred into BPS and excludes students who transferred out of BPS and deaths during the four-year period. The status (e.g., graduated, still enrolled) is updated as of October 1 of the following school year. For example, the population for the Cohort 2011 includes students who were enrolled in BPS in grade 9 in the fall of 2007 plus transfers into BPS minus transfers out of BPS or deaths occurring through the end of SY 2010-11. The status (e.g., graduated, still enrolled) is updated as of October 1, 2011.

# Boston Public Schools

## Cohort 2011 4-Year Graduation Rate

### By School (sorted by % graduated)

	Total N in Cohort	Graduates		Non-High-School-Graduates				
		4-Year % Graduated	Difference (2011 - 2010)	% Still in School	% Non-Grad Completers	% GED	% Dropped Out	Permanently Excluded
<b>District</b>	<b>4632</b>	<b>64.4</b>	<b>1.2</b>	<b>17.0</b>	<b>1.2</b>	<b>2.1</b>	<b>15.1</b>	<b>0.2</b>
Kennedy Acad*	46	100.0	8.2	0.0	0.0	0.0	0.0	0.0
Bos Latin Schl**	380	98.7	1.3	0.8	0.0	0.5	0.0	0.0
TechBoston Upper <sup>#</sup>	62	98.4	16.1	0.0	0.0	0.0	1.6	0.0
Bos Latin Acad**	273	96.0	0.8	2.9	0.0	0.0	1.1	0.0
O'Bryant**	222	93.7	3.6	3.6	0.0	0.5	2.3	0.0
New Mission	65	87.7	-0.2	7.7	0.0	0.0	4.6	0.0
BCLA	97	86.6	2.5	10.3	0.0	0.0	3.1	0.0
Bos Arts Acad	92	85.9	10.1	4.3	0.0	2.2	7.6	0.0
Media <sup>#</sup>	83	84.3	0.3	0.0	2.4	1.2	12.0	0.0
Fenway	70	82.9	-7.2	8.6	0.0	0.0	8.6	0.0
PATH <sup>#</sup>	62	75.8	11.2	0.0	0.0	4.8	19.4	0.0
Snowden	99	74.7	8.4	13.1	0.0	3.0	9.1	0.0
Quincy Upper	41	73.2	12.0	19.5	0.0	0.0	2.4	4.9
Brook Farm Acad <sup>#</sup>	72	72.2	-2.3	0.0	0.0	6.9	20.8	0.0
ACC	61	70.5	3.2	9.8	1.6	4.9	11.5	1.6
Madison Park	331	64.0	5.9	10.3	1.5	1.2	21.5	1.5
Urban Science	114	62.3	-13.4	24.6	0.9	2.6	9.6	0.0
Brighton	359	59.6	2.5	15.3	0.0	3.9	20.9	0.3
Engineering <sup>#</sup>	54	57.4	3.8	0.0	0.0	7.4	31.5	3.7
CASH	143	57.3	13.3	25.9	0.0	0.7	15.4	0.7
Excel	140	56.4	-5.2	26.4	1.4	2.9	12.1	0.7
Odyssey <sup>#</sup>	85	55.3	-2.8	0.0	0.0	10.6	30.6	3.5
East Boston	332	53.0	-5.0	29.8	0.3	1.8	14.8	0.3
English	149	50.3	-9.5	33.6	0.0	1.3	12.8	2.0
Monument <sup>#</sup>	92	50.0	2.5	0.0	0.0	2.2	45.7	2.2
Dorchester Acad	105	45.7	-8.0	21.0	0.0	4.8	26.7	1.9
Burke	258	43.4	9.1	16.7	2.7	3.1	33.7	0.4
Socl Just Acad <sup>#</sup>	86	43.0	0.4	0.0	1.2	3.5	48.8	3.5
Charlestown	281	42.7	0.0	24.6	2.8	2.8	27.0	0.0
Boston International	68	42.6	5.1	38.2	2.9	0.0	14.7	1.5
Community Acad	30	33.3	-3.5	6.7	0.0	16.7	43.3	0.0
Greater Egleston	73	30.1	0.7	39.7	1.4	5.5	23.3	0.0
BATA	165	27.9	-4.8	47.9	14.5	1.2	8.5	0.0
McKinley***	52	19.2	-1.4	50.0	1.9	1.9	26.9	0.0
BDEA*	191	16.2	-2.9	47.6	1.6	3.1	31.4	0.0
Horace Mann***	14	14.3	N/A	71.4	7.1	0.0	7.1	0.0
Carter***	-	-	N/A	-	-	-	-	-

The State 4-Y Cohort Graduation Rate Target for 2012 is 75% applied to the 2011 Cohort,

\* Horace Mann Charter Schools

\*\* Examination Schools

\*\*\* Special Education Schools

<sup>#</sup> Schools were closed or reconfigured by the end of SY2010-11.

- Graduation rates are not reported for cohort counts fewer than 6.

Percentages may not total 100 due to rounding.

- In order to meet the 2012 cohort graduation rate state targets, schools must either (1) achieve a 75% 4-Year graduation rate for the 2011 cohort, or (2) achieve an 80% 5-year graduation rate for the 2010 cohort. Based on the 4-year rate, 11 high schools have met the 75% target.

Cohort 2011 Population: Students who were enrolled in BPS in grade 9 in the fall of 2007 plus transfers into BPS minus transfers out of BPS or deaths. The cohort count is as of the end of SY2010-11. The status (e.g., graduate, enrolled) is updated as of October 1, 2011.

## Appendix

### Districtwide 4-Year Graduation Rates by Student Subgroup: Cohort 2006 to Cohort 2011

Student Group	Cohort Year	# in Cohort	Graduates		Non-High-School-Graduates			
			% Graduated	% Still in School	% Non-Grad Completers	% GED	% Dropped Out	% Expelled
<b>All Students</b>	2011	4632	64.4	17.0	1.2	2.1	15.1	0.2
	2010	4885	63.2	17.4	1.0	2.3	15.9	0.2
	2009	5040	61.4	15.3	1.3	2.5	19.3	0.2
	2008	5008	59.9	15.0	1.0	2.3	21.5	0.3
	2007	4940	57.9	18.5	1.6	2.2	19.5	0.3
	2006	4759	59.1	16.8	1.5	1.8	20.3	0.6
<b>Male</b>	2011	2389	58.0	20.7	1.2	2.7	17.1	0.3
	2010	2487	57.8	20.1	0.9	2.4	18.5	0.3
	2009	2499	55.4	18.0	1.4	2.8	21.9	0.4
	2008	2521	52.7	18.2	0.8	2.9	24.8	0.6
	2007	2394	48.8	23.1	1.5	2.6	23.4	0.5
	2006	2360	52.3	19.8	1.3	2.0	23.6	1.0
<b>Female</b>	2011	2243	71.3	13.1	1.2	1.5	12.9	0.0
	2010	2398	68.8	14.7	1.0	2.3	13.1	0.1
	2009	2541	67.2	12.7	1.1	2.1	16.8	0.0
	2008	2487	67.2	11.7	1.2	1.6	18.2	0.0
	2007	2546	66.5	14.1	1.7	1.8	15.9	0.1
	2006	2399	65.8	13.8	1.8	1.5	17.0	0.2
<b>ELL</b>	2011	955	51.9	27.2	4.8	0.4	15.5	0.1
	2010	912	53.3	25.7	3.6	0.4	16.9	0.1
	2009	923	47.9	23.8	5.9	0.1	22.2	0.1
	2008	834	45.0	21.3	5.3	0.4	27.8	0.2
	2007	781	38.8	28.3	6.8	0.1	26.0	0.0
	2006	1284	54.0	18.9	3.1	0.4	23.5	0.1
<b>Special Education</b>	2011	906	40.8	31.9	0.7	1.1	25.3	0.2
	2010	969	40.9	32.8	0.5	1.5	24.3	0.0
	2009	993	41.0	28.4	0.7	1.8	27.8	0.3
	2008	969	36.9	31.0	0.2	0.5	31.2	0.2
	2007	973	35.8	35.1	1.4	1.1	26.2	0.3
	2006	919	36.2	30.8	2.3	0.7	29.3	0.8
<b>Low Income</b>	2011	3886	63.0	18.4	1.3	2.2	15.0	0.2
	2010	4108	62.2	19.0	1.0	2.1	15.5	0.2
	2009	4279	60.4	16.3	1.2	2.3	19.5	0.3
	2008	3946	59.1	15.8	0.8	2.3	21.7	0.4
	2007	3886	57.9	20.5	1.5	2.0	17.8	0.2
	2006	3771	58.2	18.0	1.7	1.3	20.3	0.6
<b>Black or Afr. Amer.</b>	2011	1799	62.3	19.0	1.7	1.8	15.0	0.3
	2010	1946	60.6	20.0	1.0	1.8	16.3	0.2
	2009	2085	60.7	16.4	1.6	1.8	19.2	0.3
	2008	2139	59.6	17.2	1.7	2.0	19.0	0.6
	2007	2138	54.2	20.7	2.3	2.0	20.4	0.4
	2006	2289	55.7	18.0	2.2	1.7	21.6	0.8
<b>Asian</b>	2011	445	80.4	9.2	3.4	0.7	6.3	0.0
	2010	463	81.6	7.3	3.5	2.6	4.8	0.2
	2009	457	78.8	8.8	4.2	0.7	7.4	0.2
	2008	422	81.3	7.3	1.7	0.5	9.0	0.2
	2007	445	80.9	8.1	1.6	2.5	6.7	0.2
	2006	421	82.7	10.2	0.5	0.7	5.9	0.0
<b>Hispanic</b>	2011	1673	57.4	20.3	0.6	3.0	18.5	0.2
	2010	1737	56.8	19.5	0.5	2.5	20.4	0.2
	2009	1698	52.6	18.1	0.6	3.1	25.3	0.3
	2008	1596	50.4	16.1	0.6	2.4	30.3	0.2
	2007	1556	51.0	22.2	1.1	1.7	23.8	0.2
	2006	1265	50.6	19.8	1.5	1.6	26.2	0.2
<b>Amer. Ind. or Alaska Nat.</b>	2011	7	100.0	0.0	0.0	0.0	0.0	0.0
	2010	15	73.3	13.3	0.0	0.0	13.3	0.0
	2009	21	85.7	4.8	0.0	0.0	9.5	0.0
	2008	20	55.0	10.0	0.0	10.0	25.0	0.0
	2007	18	44.4	22.2	0.0	0.0	33.3	0.0
	2006	16	50.0	25.0	0.0	0.0	25.0	0.0
<b>White</b>	2011	629	76.6	9.2	0.0	1.9	12.2	0.0
	2010	644	74.4	12.0	0.2	3.4	9.9	0.2
	2009	727	71.7	10.7	0.1	3.6	13.9	0.0
	2008	786	68.1	10.7	0.0	3.4	17.7	0.1
	2007	734	68.8	10.4	0.4	3.8	16.2	0.4
	2006	746	70.6	11.3	0.1	2.8	14.5	0.7
<b>Nat. Haw. or Pacif. Isl.</b>	2011	6	66.7	16.7	0.0	0.0	16.7	0.0
	2010	-	-	-	-	-	-	-
	2009	6	66.7	0.0	0.0	16.7	16.7	0.0
	2008	-	-	-	-	-	-	-
	2007	2	-	-	-	-	-	-
	2006	2	-	-	-	-	-	-
<b>Multi-race, Non-Hisp.</b>	2011	73	71.2	9.6	1.4	0.0	17.8	0.0
	2010	76	65.8	11.8	1.3	0.0	21.1	0.0
	2009	46	67.4	10.9	0.0	6.5	15.2	0.0
	2008	40	70.0	15.0	0.0	2.5	12.5	0.0
	2007	47	74.5	19.1	0.0	0.0	6.4	0.0
	2006	20	65.0	25.0	0.0	5.0	5.0	0.0

Note: Percentages may not total to 100% due to rounding. Graduation rates are not reported for cohort counts fewer than 6.