

Overview

The SAT results in this report present data for 2011 seniors who participated in the SAT testing program at any time during their high school years. The SAT Reasoning Test measures students' skills in critical reading (formerly called "verbal"), mathematics, and writing. The writing section was added to the test in March 2005 and scores were first reported for the class of 2006. These tests, with a score range from 200 to 800, are designed to help colleges and universities identify students for admission and to plan their educational programs to meet the needs of their incoming students.

Number and Percent of Senior Class Taking SAT Reasoning Test

Class of	# Taking SAT I	% of Senior Class
2011	2,838	67%
2010	2,661	63%
2009	2,594	58%
2008	2,697	64%
2007	2,760	67%
2006	2,437	62%
2005	2,581	66%
2004	2,324	63%
2003	2,373	65%
2002	2,216	56%

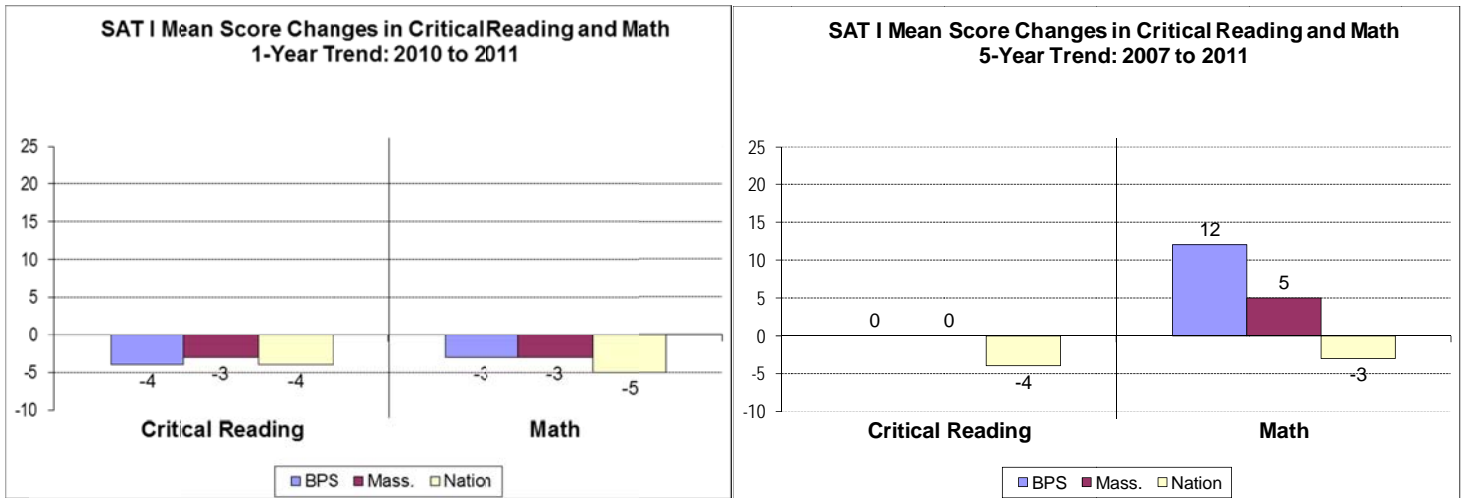
Source: College Board for number taking test, BPS Information Services—Student Records Department—for grade 12 enrollments.

Mean Scores of SAT Reasoning Test Over Time

Class of	Critical Reading			Mathematics			Writing		
	BPS	Mass.	Nation	BPS	Mass.	Nation	BPS	Mass.	Nation
2011	432	505	494	461	521	506	427	500	483
2010	436	508	498	464	524	511	432	504	488
2009	432	508	496	458	522	510	431	504	487
2008	438	507	497	457	520	510	436	505	488
2007	432	505	498	449	516	509	430	501	488
2006	435	506	500	452	518	514	431	502	492
2005	432	513	505	455	522	515	—	—	—
2004	431	511	505	445	519	515	—	—	—
2003	434	509	504	453	518	516	—	—	—
2002	425	504	500	444	510	512	—	—	—

Note: BPS 2008 mean scores were calculated as weighted means and may be slightly different from the College Board release due to rounding. Writing mean scores were first reported in 2006. Mean scores for Massachusetts and the nation in this table have been updated to reflect only the results from public schools. In reports prior to 2008 the state and national mean scores included non-public schools.

One- And Five-Year Trends



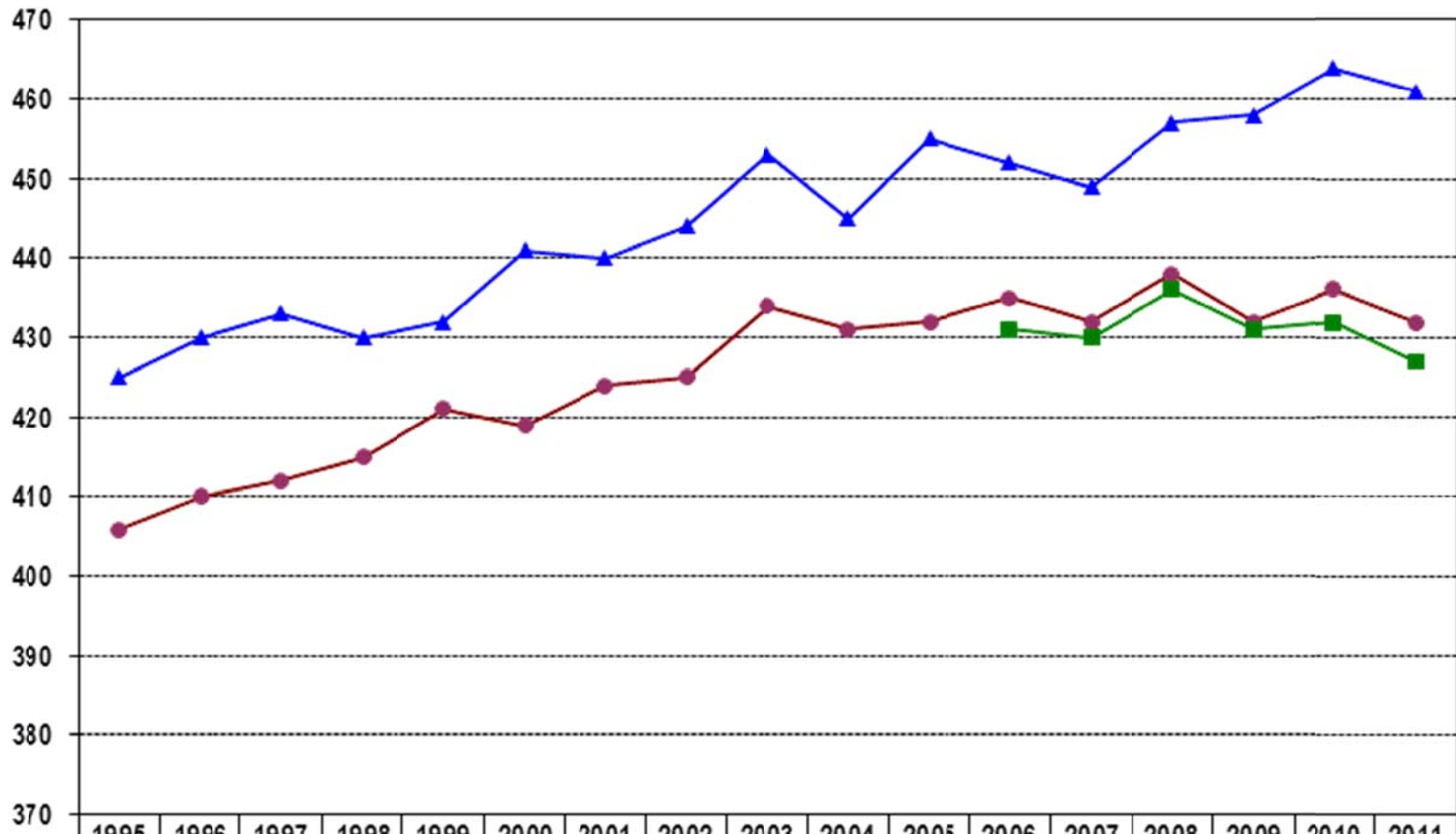
- One-year trend: BPS mean scores declined moderately in both critical reading and math, at levels similar to both the Massachusetts and the national average decline. In critical reading, the BPS mean score declined from 436 to 432 from 2010 to 2011. In math, the BPS mean score declined from 464 to 461 from 2010 to 2011.
- In writing, there was a declining trend from 2010 to 2011 for BPS, Massachusetts, and the nation, with all groups declining at similar levels.
- Five-year trend: From 2007 to 2011, the BPS mean critical reading score remained constant at 432 paralleling the state trend, while the mean mathematics score increased 12 points from 449 to 461. These gains on math are substantially higher than the changes for both Massachusetts and the nation.
- In writing, the BPS mean score fell 3 points to 427 from 2007 to 2011. During this time, Massachusetts experienced a decline of 1 point, while the nation experienced a decrease of 5 points.

School Summary Results for 2011 College Bound Seniors

School	Number of Test Takers	Mean Scores		
		Critical Reading	Mathematics	Writing
ACC	50	399	415	399
BATA	10	328	443	297
BCLA	96	382	411	373
BDEA	31	414	389	382
Bos Arts Acad	95	424	431	430
Bos Latin Acad	272	513	544	510
Bos Latin Schl	386	619	633	615
Boston Intl	40	322	363	314
Brighton	156	383	408	379
Brook Farm Acad	58	389	413	367
Burke	88	348	378	337
CASH	69	347	380	351
Charlestown	104	345	446	356
Community Acad	5	328	412	338
Dorchester Acad	50	397	413	391
East Boston	131	397	432	401
Engineering	21	396	423	373
English	86	357	370	341
Excel	78	367	459	364
Fenway	58	417	462	428
Greater Eglestn	25	341	309	306
Health Careers	49	437	428	443
McKinley Prep	3	-	-	-
Media Comm Tech	60	365	382	355
Monument	42	362	383	354
MP-Madison Park	136	351	369	346
New Mission	56	381	408	376
O'Bryant	213	468	525	473
Odyssey	36	388	402	376
PATH	62	390	407	376
Quincy Upper	31	414	473	415
Snowden	74	410	415	399
Soc Just Acad	46	369	408	349
TechBoston	68	386	404	367
Urban Science	53	402	418	381

Note: Mean scores are not reported when there are fewer than five test takers.

Boston Public Schools
SATI Mean Scores in Critical Reading, Mathematics, and Writing
Trends from 1995 through 2011



● Critical Reading	406	410	412	415	421	419	424	425	434	431	432	435	432	438	432	436	432
▲ Math	425	430	433	430	432	441	440	444	453	445	455	452	449	457	458	464	461
■ Writing												431	430	436	431	432	427