

SAT Reasoning Test

Boston Public Schools

Class of 2016 College-Bound Seniors

Overview

The SAT results in this report present data for 2016 seniors who participated in the SAT testing program at any time during their high school years. The SAT Reasoning Test measures students' skills in critical reading (formerly called "verbal"), mathematics, and writing. The writing section was added to the test in March 2005 and scores were first reported for the class of 2006. These tests, with a score range from 200 to 800, are designed to help colleges and universities identify students for admission and to plan their educational programs to meet the needs of their incoming students.

Number and Percent of Senior Class Taking SAT Reasoning Test

Class of	# Taking SAT I	% of Senior Class
2016	2,779	63%
2015	2,716	61%
2014	2,652	63%
2013	2,735	65%
2012	2,802	66%
2011	2,838	67%
2010	2,661	63%
2009	2,594	58%
2008	2,697	64%
2007	2,760	67%
2006	2,437	62%
2005	2,581	66%
2004	2,324	63%
2003	2,373	65%

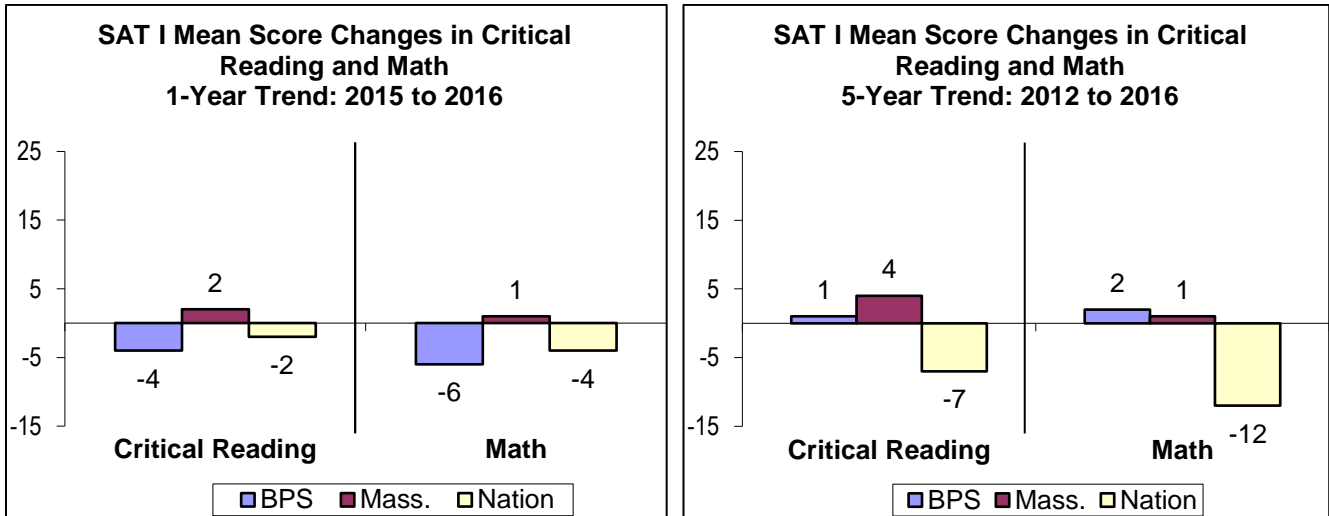
Source: College Board for number taking test, BPS Information Services—Student Records Department—for grade 12 enrollments.

Mean Scores of SAT Reasoning Test over Time

Class of	Critical Reading			Mathematics			Writing		
	BPS	Mass.	Nation	BPS	Mass.	Nation	BPS	Mass.	Nation
2016	433	509	487	463	522	494	430	496	472
2015	437	507	489	469	521	498	434	497	475
2014	431	507	492	464	523	501	430	498	478
2013	430	506	491	463	521	503	429	500	480
2012	428	506	491	460	523	505	424	500	481
2011	432	505	494	461	521	506	427	500	483
2010	436	508	498	464	524	511	432	504	488
2009	432	508	496	458	522	510	431	504	487
2008	438	507	497	457	520	510	436	505	488
2007	432	505	498	449	516	509	430	501	488
2006	435	506	500	452	518	514	431	502	492
2005	432	513	505	455	522	515	—	—	—
2004	431	511	505	445	519	515	—	—	—
2003	434	509	504	453	518	516	—	—	—

Note: BPS 2008 mean scores were calculated as weighted means and may be slightly different from the College Board release due to rounding. Writing mean scores were first reported in 2006. Mean scores for Massachusetts and the nation in this table have been updated to reflect only the results from public schools. In reports prior to 2008 the state and national mean scores included non-public schools.

One- And Five-Year Trends



- One-year trend: BPS SAT scores decreased by about 5 points for both the reading and math portions of the SAT. More specifically, reading scores decreased from 437 in 2015 to 433 in 2016 and math score decreased from 469 in 2015 to 463 in 2016. The national scores experienced a similar decrease of about 3 points. On the other hand, the state scores increased by 2 and 1 points for the reading and math scores, respectively.
- The BPS average score in writing also decreased, from 434 to 430. The state and nation also experienced decreases in the writing over the past year.
- Five-year trend: Over the past five years, the BPS mean critical reading score increased 1 point to 433. In math, the BPS score increased 2 points to 463 over the course of five years. This 5 year increase is similar to that seen across the state, while the state experienced a higher increase (4 points) in reading, they experienced a lower increase in math (1 point). However, in the same time period the national scores have decreased by 7 and 12 points for critical reading and math, respectively.

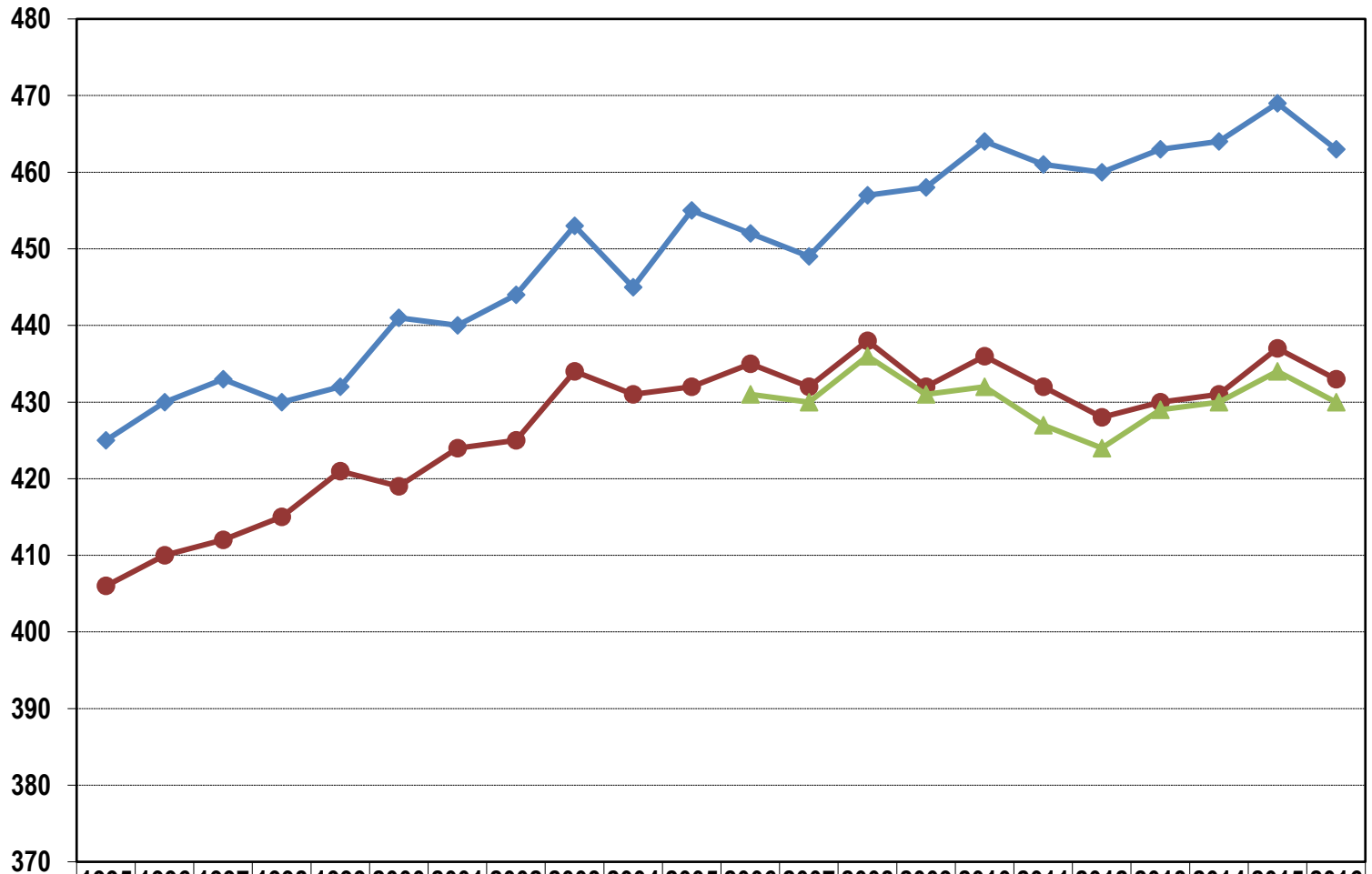
School Summary Results for 2016 College Bound Seniors

School	Number of Test Takers	Mean Scores		
		Critical Reading	Mathematics	Writing
Another Course to College	45	380	411	400
Boston Arts Academy	99	439	435	427
Boston Community Leadership Academy	107	397	434	393
Boston Day and Evening Academy	22	404	405	375
Boston Green Academy	38	367	357	336
Boston International	70	312	345	303
Boston Latin Academy	262	526	557	527
Boston Latin School	412	629	647	614
Brighton High School	130	357	392	353
Charlestown High School	126	344	430	347
Community Academy of Science and Health	86	329	369	334
Dorchester Academy	15	352	410	377
East Boston High School	174	385	416	390
Edward M Kennedy Health Careers	69	386	397	395
English High School	70	337	361	334
Excel High School	94	346	403	357
Fenway High School	69	392	437	393
Greater Egleston	14	364	406	354
Burke High School	90	354	379	345
O'Bryant School of Math and Science	241	482	528	482
Quincy Upper School	47	409	459	409
Madison Park	60	352	358	346
Mary Lyon K-12 School	30	412	389	363
New Mission High School	80	399	429	405
Snowden International School at Copley	64	385	392	368
Techboston Academy	110	367	401	369
Urban Science Academy	57	384	399	377
West Roxbury Academy	96	359	373	355
BPS	2779	433	463	430

Boston Public Schools

SAT I Mean Scores in Critical Reading, Mathematics, and Writing

Trends from 1995 through 2016



	1995	1996	1997	1998	1999	2000	2001	2002	2003	2004	2005	2006	2007	2008	2009	2010	2011	2012	2013	2014	2015	2016
● Critical Reading BPS	406	410	412	415	421	419	424	425	434	431	432	435	432	438	432	436	432	428	430	431	437	433
◆ Math BPS	425	430	433	430	432	441	440	444	453	445	455	452	449	457	458	464	461	460	463	464	469	463
▲ Writing BPS												431	430	436	431	432	427	424	429	430	434	430