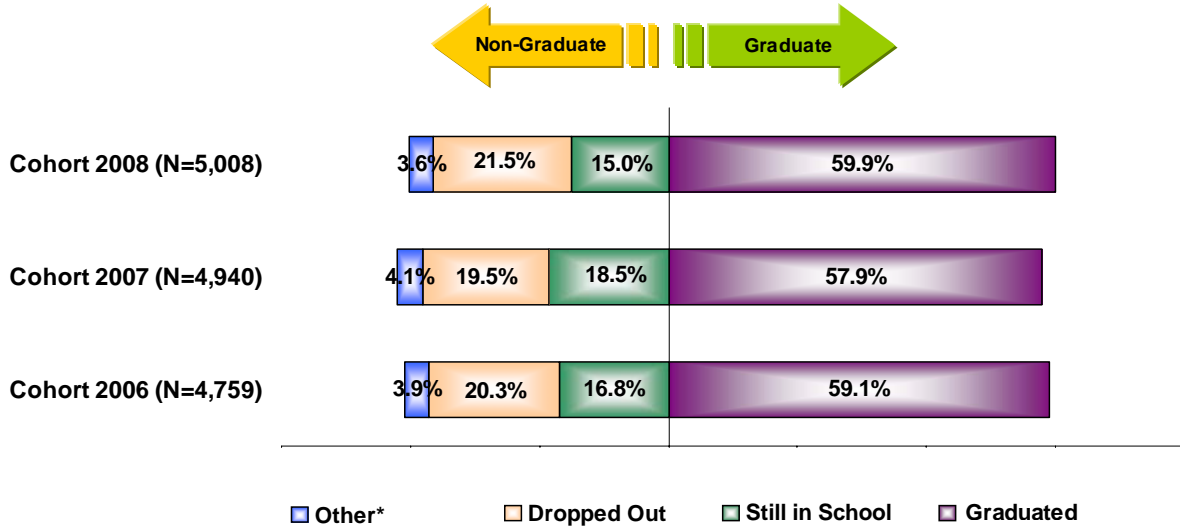


Boston Public Schools

4-Year Graduation Rate By Cohort Group**



* Other: includes Non-Graduate Completers, GED and Expelled.

Note: Percentages may not total to 100% due to rounding.

- Students in the 2008 cohort had a 4-year graduation rate of 59.9%, a two-point increase compared to students in the 2007 cohort. However, the percentage of students still in schools (15%) is lower, while the 4-year cohort dropout rate increased 2 percentage points.

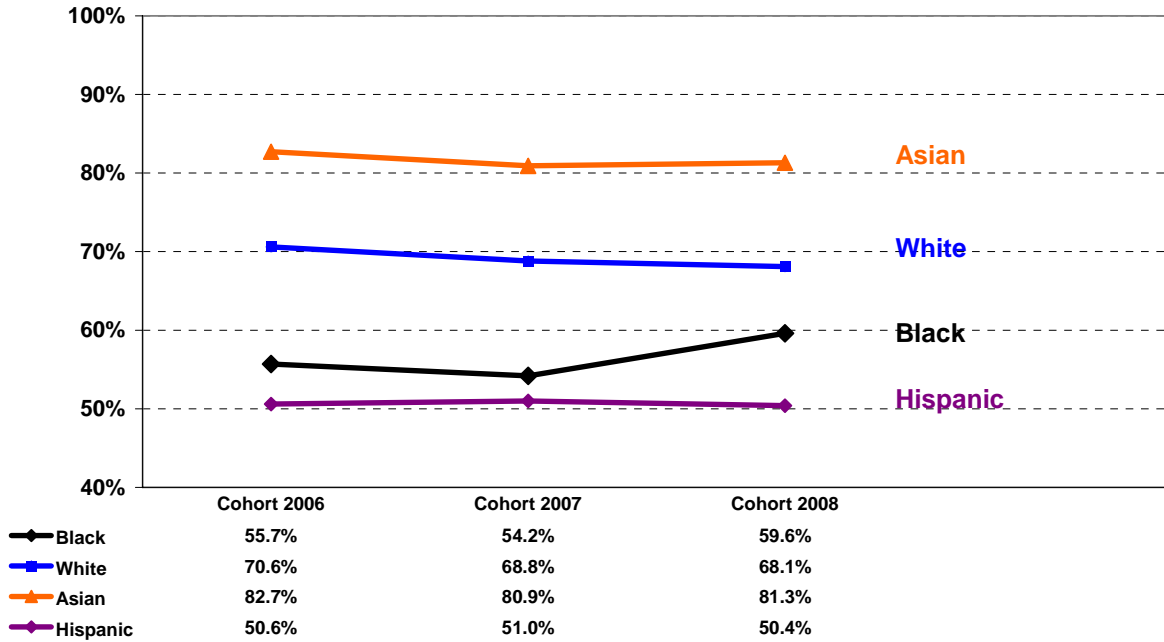
** Cohort 2008 Population: Students who were enrolled in BPS in grade 9 in the fall of 2004 plus transfers into BPS minus transfers out of BPS or deaths. The cohort count is as of the end of SY2007-08. The status (e.g., graduate, enrolled) is updated as of October 1, 2008.

Cohort 2007 Population: Students who were enrolled in BPS in grade 9 in the fall of 2003 plus transfers into BPS minus transfers out of BPS or deaths. The cohort count is as of the end of SY2006-07. The status (e.g., graduate, enrolled) is updated as of October 1, 2007.

Cohort 2006 Population: Students who were enrolled in BPS in grade 9 in the fall of 2002 plus transfers into BPS minus transfers out of BPS or deaths. The cohort count is as of the end of SY2005-06. The status (e.g., graduate, enrolled) is updated as of October 1, 2006.

Boston Public Schools

4-Year Graduation Rate By Race/Ethnicity



- Within each cohort, Asian students have the highest 4-year graduation rate, while Hispanic students have the lowest.
- Compared to the previous cohort, the 4-year graduation rate for black students in the 2008 cohort increased 5.4 percentage points. Asian students saw an increase of 0.4 points. The 4-year graduation rates for White and Hispanic students declined slightly.

Detailed statistics by student status for all racial groups can be found in the Appendix.

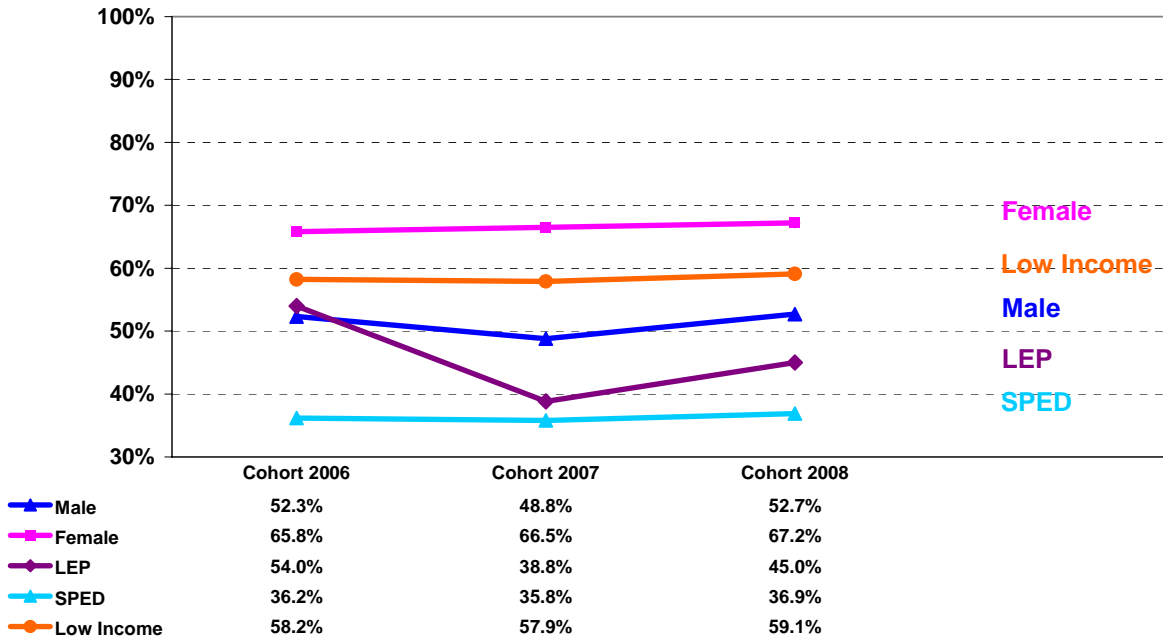
Cohort 2008 Population: Students who were enrolled in BPS in grade 9 in the fall of 2004 plus transfers into BPS minus transfers out of BPS or deaths. The cohort count is as of the end of SY2007-08. The status (e.g., graduate, enrolled) is updated as of October 1, 2008.

Cohort 2007 Population: Students who were enrolled in BPS in grade 9 in the fall of 2003 plus transfers into BPS minus transfers out of BPS or deaths. The cohort count is as of the end of SY2006-07. The status (e.g., graduate, enrolled) is updated as of October 1, 2007.

Cohort 2006 Population: Students who were enrolled in BPS in grade 9 in the fall of 2002 plus transfers into BPS minus transfers out of BPS or deaths. The cohort count is as of the end of SY2005-06. The status (e.g., graduate, enrolled) is updated as of October 1, 2006.

Boston Public Schools

4-Year Graduation Rate By Other NCLB Student Group



- Compared to the 2007 cohort, male, female, Limited English Proficient (LEP), Special Education (SPED), and Low Income students in the 2008 cohort all saw significant increases in their 4-year graduation rates. Specifically, the rate was up 6.2 percentage points for LEP; 3.9 points for males; 1.2 points for low Income; 1.1 points for SPED; and 0.7 points for female students.

Detailed statistics by student status for all student subgroups are presented in Appendix.

Cohort 2008 Population: Students who were enrolled in BPS in grade 9 in the fall of 2004 plus transfers into BPS minus transfers out of BPS or deaths. The cohort count is as of the end of SY2007-08. The status (e.g., graduate, enrolled) is updated as of October 1, 2008.
 Cohort 2007 Population: Students who were enrolled in BPS in grade 9 in the fall of 2003 plus transfers into BPS minus transfers out of BPS or deaths. The cohort count is as of the end of SY2006-07. The status (e.g., graduate, enrolled) is updated as of October 1, 2007.
 Cohort 2006 Population: Students who were enrolled in BPS in grade 9 in the fall of 2002 plus transfers into BPS minus transfers out of BPS or deaths. The cohort count is as of the end of SY2005-06. The status (e.g., graduate, enrolled) is updated as of October 1, 2006.

Boston Public Schools

Cohort 2008 4-Year Graduation Rate

By School (sorted by % graduated)

District	Total N in Cohort	Graduates		Non-High-School-Graduates				
		4-Year % Graduated	Difference (2008 - 2007)	% Still in School	% Non-Grad Completers	% GED	% Dropped Out	% Permanently Excluded
District	5008	59.9	2.0	15.0	1.0	2.3	21.5	0.3
Bos Latin Schl**	372	96.5	1.3	2.2	0.0	0.5	0.3	0.5
O'Bryant**	199	96.5	1.7	0.5	0.0	1.5	1.5	0.0
Quincy Upper	50	96.0	1.3	0.0	0.0	0.0	4.0	0.0
Bos Latin Acad**	226	92.5	-2.0	4.4	0.0	1.3	1.3	0.4
Health Careers*	71	91.5	-4.0	0.0	0.0	1.4	7.0	0.0
Fenway	74	87.8	-1.1	5.4	0.0	1.4	4.1	1.4
New Mission	66	84.8	2.8	7.6	0.0	3.0	4.5	0.0
Bos Arts Acad	97	83.5	2.2	1.0	0.0	2.1	13.4	0.0
Media Comm Tech	104	77.9	5.9	8.7	1.0	1.9	10.6	0.0
BCLA	86	76.7	5.8	14.0	0.0	1.2	8.1	0.0
PATH	82	74.4	8.7	4.9	0.0	0.0	19.5	1.2
TechBoston	86	74.4	11.3	9.3	0.0	2.3	14.0	0.0
Urban Science	62	72.6	14.4	4.8	0.0	0.0	22.6	0.0
Brook Farm Acad	86	66.3	2.6	11.6	0.0	3.5	18.6	0.0
Snowden	104	58.7	-10.4	11.5	0.0	2.9	24.0	2.9
ACC	62	58.1	11.9	14.5	0.0	4.8	21.0	1.6
CASH	146	57.5	0.2	13.7	3.4	1.4	23.3	0.7
Madison Park	373	55.8	1.7	19.6	0.0	2.1	22.3	0.3
East Boston	391	55.0	7.4	16.4	1.5	2.0	25.1	0.0
Noonan Bus Acad	72	54.2	9.3	9.7	0.0	1.4	31.9	2.8
Brighton	378	52.9	-9.7	12.7	0.0	2.4	31.0	1.1
English	268	51.9	2.6	16.4	0.0	1.9	27.6	2.2
Engineering	94	51.1	19.2	13.8	1.1	4.3	29.8	0.0
Excel	108	48.1	3.1	13.9	0.9	5.6	30.6	0.9
Acad Publ Serv	87	47.1	1.3	9.2	1.1	4.6	36.8	1.1
Charlestown	344	46.8	-0.9	21.5	0.6	4.7	25.6	0.9
Odyssey	103	46.6	6.8	11.7	0.0	4.9	33.0	3.9
Monument	140	40.7	-3.2	15.0	0.0	7.1	33.6	3.6
Burke	214	40.2	7.9	16.4	0.0	1.4	42.1	0.0
Community Acad	72	36.1	1.7	8.3	0.0	8.3	45.8	1.4
Socl Just Acad	91	35.2	-5.7	28.6	0.0	2.2	31.9	2.2
BDEA*	148	33.1	14.2	30.4	0.7	2.7	29.7	3.4
McKinley***	75	26.7	4.6	38.7	0.0	1.3	33.3	0.0
BATA	123	25.2	14.3	22.0	27.6	0.0	25.2	0.0
Greater Egleston	52	21.2	1.6	25.0	1.9	1.9	50.0	0.0
Boston International	52	17.3	-23.0	32.7	0.0	0.0	50.0	0.0
Carter***	-	-	-	-	-	-	-	-
Horace Mann***	-	-	-	-	-	-	-	-

2009 AYP Graduation Rate Target NA as of 02/05/09. (2008 target was 60% or 2 point increase)

* Horace Mann Charter Schools

** Examination Schools

*** Special Education Schools

- Graduation rates are not reported for cohort counts fewer than 6.

Percentages may not total 100 due to rounding.

- The 2009 AYP graduation rate target has not been released by MA ESE as of February 5, 2009. If it remains unchanged from 2008, 14 high schools would meet the 60% target; in addition, 11 high schools, though not meeting the 60% target, would meet the 2008 requirement of a 2 point increase from the previous year.

Cohort 2008 Population: Students who were enrolled in BPS in grade 9 in the fall of 2004 plus transfers into BPS minus transfers out of BPS or deaths. The cohort count is as of the end of SY2007-08. The status (e.g., graduate, enrolled) is updated as of October 1, 2008.

Appendix

Districtwide 4-Year Graduation Rates by Student Status: Cohort 2006 to Cohort 2008

Student Group	Cohort Year	# in Cohort	Graduates	Non-High-School-Graduates				
			% Graduated	% Still in School	% Non-Grad Completers	% Dropped Out	% GED	% Expelled
All Students	2008	5008	59.9	15.0	1.0	2.3	21.5	0.3
	2007	4940	57.9	18.5	1.6	2.2	19.5	0.3
	2006	4759	59.1	16.8	1.5	1.8	20.3	0.6
Male	2008	2521	52.7	18.2	0.8	2.9	24.8	0.6
	2007	2394	48.8	23.1	1.5	2.6	23.4	0.5
	2006	2360	52.3	19.8	1.3	2.0	23.6	1.0
Female	2008	2487	67.2	11.7	1.2	1.6	18.2	0.0
	2007	2546	66.5	14.1	1.7	1.8	15.9	0.1
	2006	2399	65.8	13.8	1.8	1.5	17.0	0.2
Lim. English Prof.	2008	834	45.0	21.3	5.3	0.4	27.8	0.2
	2007	781	38.8	28.3	6.8	0.1	26.0	0.0
	2006	1284	54.0	18.9	3.1	0.4	23.5	0.1
Special Education	2008	969	36.9	31.0	0.2	0.5	31.2	0.2
	2007	973	35.8	35.1	1.4	1.1	26.2	0.3
	2006	919	36.2	30.8	2.3	0.7	29.3	0.8
Low Income	2008	3946	59.1	15.8	0.8	2.3	21.7	0.4
	2007	3886	57.9	20.5	1.5	2.0	17.8	0.2
	2006	3771	58.2	18.0	1.7	1.3	20.3	0.6
Black or Afr. Amer.	2008	2139	59.6	17.2	1.7	2.0	19.0	0.6
	2007	2138	54.2	20.7	2.3	2.0	20.4	0.4
	2006	2289	55.7	18.0	2.2	1.7	21.6	0.8
Asian	2008	422	81.3	7.3	1.7	0.5	9.0	0.2
	2007	445	80.9	8.1	1.6	2.5	6.7	0.2
	2006	421	82.7	10.2	0.5	0.7	5.9	0.0
Hispanic	2008	1596	50.4	16.1	0.6	2.4	30.3	0.2
	2007	1556	51.0	22.2	1.1	1.7	23.8	0.2
	2006	1265	50.6	19.8	1.5	1.6	26.2	0.2
Amer. Ind. or Alaska Nat.	2008	20	55.0	10.0	0.0	10.0	25.0	0.0
	2007	18	44.4	22.2	0.0	0.0	33.3	0.0
	2006	16	50.0	25.0	0.0	0.0	25.0	0.0
White	2008	786	68.1	10.7	0.0	3.4	17.7	0.1
	2007	734	68.8	10.4	0.4	3.8	16.2	0.4
	2006	746	70.6	11.3	0.1	2.8	14.5	0.7
Nat. Haw. or Pacif. Isl.	2008	-	-	-	-	-	-	-
	2007	2	-	-	-	-	-	-
	2006	2	-	-	-	-	-	-
Multi-race, Non-Hisp.	2008	40	70.0	15.0	0.0	2.5	12.5	0.0
	2007	47	74.5	19.1	0.0	0.0	6.4	0.0
	2006	20	65.0	25.0	0.0	5.0	5.0	0.0

Note: Percentages may not total to 100% due to rounding.
Graduation rates are not reported for cohort counts fewer than 6.

Cohort 2008 Population: Students who were enrolled in BPS in grade 9 in the fall of 2004 plus transfers into BPS minus transfers out of BPS or deaths. The cohort count is as of the end of SY2007-08. The status (e.g., graduate, enrolled) is updated as of October 1, 2008.

Cohort 2007 Population: Students who were enrolled in BPS in grade 9 in the fall of 2003 plus transfers into BPS minus transfers out of BPS or deaths. The cohort count is as of the end of SY2006-07. The status (e.g., graduate, enrolled) is updated as of October 1, 2007.

Cohort 2006 Population: Students who were enrolled in BPS in grade 9 in the fall of 2002 plus transfers into BPS minus transfers out of BPS or deaths. The cohort count is as of the end of SY2005-06. The status (e.g., graduate, enrolled) is updated as of October 1, 2006.