

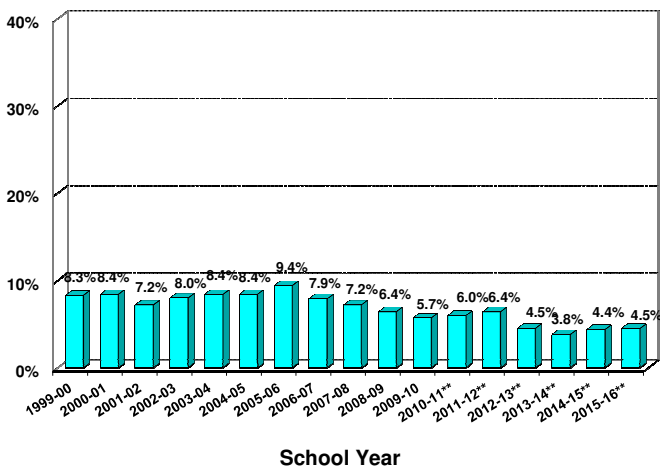
Q and A

Boston Public Schools 2015-2016: Student Dropout Rates

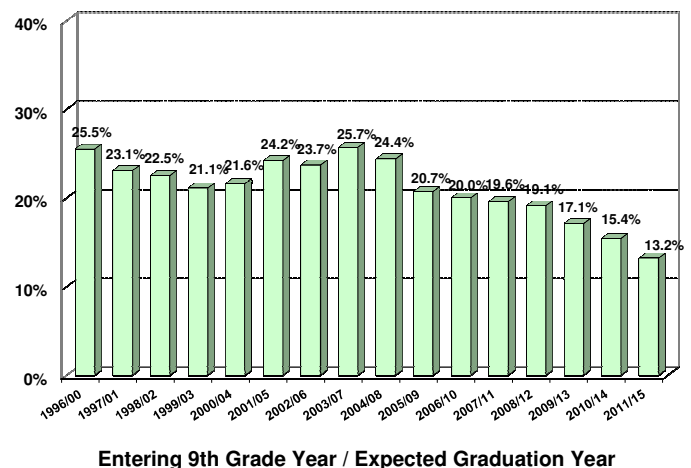
This document presents answers to some of the most frequently asked questions about student dropout in the Boston Public Schools. As defined by the Massachusetts Department of Elementary and Secondary Education (MA DESE) and the National Center for Education Statistics, a student is considered to be a dropout at the end of the school year if he or she is not in school, has not graduated, and has not transferred to another school system*. Please see the attached “Understanding Annual High School Dropout Calculations” for details on the methodology. It is the goal of Boston Public Schools to keep all high school students in schools and to prepare them for College, Career, and beyond.

How Have System Wide Dropout Rates Varied Over Time?

Annual Dropout Rates* Systemwide: Grades 9-12



Ninth Grade Cohort Dropout Rates Systemwide



- The annual rate analysis answers the question, “How many students in grades 9-12 drop out in one year?”
- The grades 9–12 annual dropout rate in 2015-2016 was 4.5%. This represents a 0.1 percentage point increase from the previous year, and 18 more students.

- The cohort rate analysis answers the question, “Of the students who entered BPS as 9th graders, what proportion dropped out over the next **five** years?”
- The 9th grade cohort dropout rate decreased to its lowest point ever at 13.2% for the 2011/2015 cohort.
- Although the 9th grade cohort dropout rate has fluctuated from year to year, the rate has declined steadily for the past eight years.

Note: Final annual dropout rates are reported in this document. These final dropout rates differ from the June rates shown in the School Report Cards because they account for changes in student status between June and the following October. This is done to conform with MA DESE guidelines. It should be noted that from SY2003-04 onward, the student status reported in the next school year October 1 Student Information Management System (SIMS) is used for the adjustment rather than identified by school personnel via a survey as done in previous years. Also, beginning with SY2006-07, BPS Student Discharge Codes have been changed to align with the enrollment status codes used by the MA DESE.

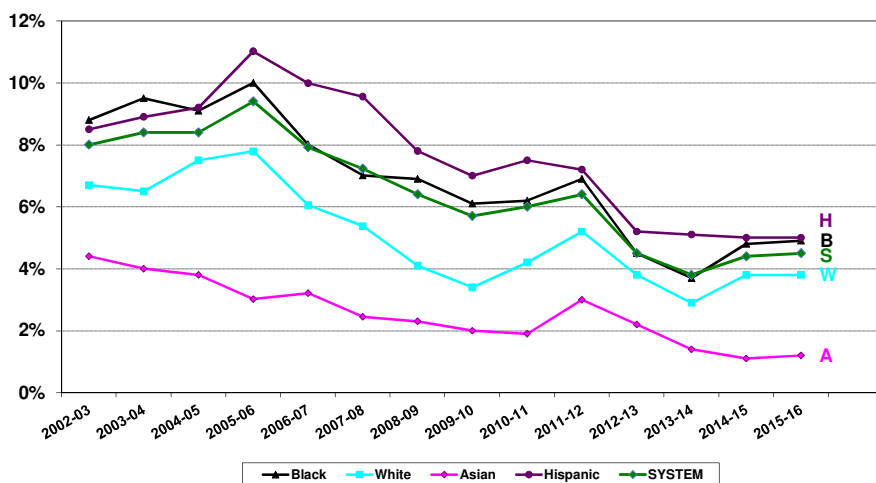
* Beginning in SY2006-07, students who died or were expelled are excluded from the population instead of being counted as other loss. Caution should be used when comparing data from 2006-07 and later with data from earlier years.

** Beginning with SY2010-11, BPS dropouts who were found enrolled in another district or Charter school based on the statewide October 1 SIMS for the subsequent school year are counted as returned dropouts.

Q and A Boston Public Schools 2015-2016: Student Dropout Rates

How Have System Wide Dropout Rates Varied Over Time by Racial/Ethnic Group?

Annual Dropout Rate by Racial/Ethnic Group:
2002-03 through 2015-16



	Black	White	Asian	Hispanic	SYSTEM
2002-03	8.8%	6.7%	4.4%	8.5%	8.0%
2003-04	9.5%	6.5%	4.0%	8.9%	8.4%
2004-05	9.1%	7.5%	3.8%	9.2%	8.4%
2005-06	10.0%	7.8%	3.0%	11.0%	9.4%
2006-07	8.0%	6.1%	3.2%	10.0%	7.9%
2007-08	7.0%	5.4%	2.4%	9.6%	7.2%
2008-09	6.9%	4.1%	2.3%	7.8%	6.4%
2009-10	6.1%	3.4%	2.0%	7.0%	5.7%
2010-11	6.2%	4.2%	1.9%	7.5%	6.0%
2011-12	6.9%	5.2%	3.0%	7.2%	6.4%
2012-13	4.5%	3.8%	2.2%	5.2%	4.5%
2013-14	3.7%	2.9%	1.4%	5.1%	3.8%
2014-15	4.8%	3.8%	1.1%	5.0%	4.4%
2015-16	4.9%	3.8%	1.2%	5.0%	4.5%

- Dropout rates have decreased steadily for all racial/ethnic groups since 2005-06. In 2015-16, dropout rate remained the lowest ever for Hispanic students group in the reporting period.
- Over the last year, dropout rates for Black and Asian students each increased by 0.1 percentage points, while White and Hispanic students remained unchanged.

How Do Dropout Rates Vary by Racial/Ethnic Group and Gender?

Annual Dropout Rates by Racial/Ethnic Group and Gender: Grades 9-12, 2015-2016

	Overall		Male		Female	
	Percent	Number	Percent	Number	Percent	Number
Black	4.9%	357	5.8%	215	4.0%	142
White	3.8%	86	5.2%	60	2.4%	26
Asian	1.2%	21	1.6%	15	0.7%	6
Hispanic	5.0%	359	6.5%	243	3.4%	116
TOTALS**	4.5%	830	5.6%	536	3.3%	294

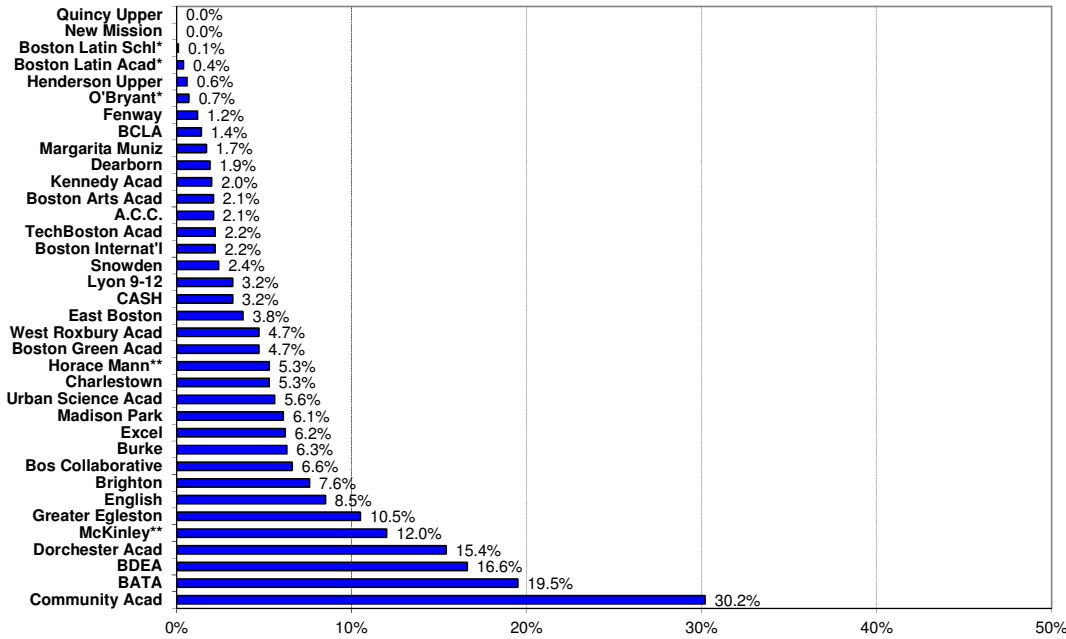
** Totals include 4 Multiracial and 3 Native American dropouts who are not shown separately by gender.

- Overall, more males than females dropped out.
- The dropout rate is lowest among Asian female students and highest among Hispanic males.
- Gender differences are most pronounced among Hispanic students.

Q and A Boston Public Schools 2015-2016: Student Dropout Rates

How do Dropout Rates Differ Across Schools?

Annual Dropout Rate by School: Grades 9-12, 2015-16



- Dropout rates vary substantially across schools.
- Dropout rates range from a low of 0% to a high of 30.2%.
- School enrollments in grades 9-12 ranged from 38 to slightly over 1,600.

* Examination School ** Special Needs School. Note: Students who dropped out are attributed to the last school to which they were assigned.

How do Dropout Rates Vary Across Neighborhoods?

- Dropout rates vary substantially according to where students live.
- The percentage of dropouts varies from a low of 1.0% in West Roxbury to a high of 6.1% in Grove Hall.
- There is also considerable variation in the number of students from each neighborhood who attend Boston Public Schools.

Annual Dropout Rate by Neighborhood (Zip Code): Grades 9-12, 2015-2016

	Percent	Number	Students in Neighborhood
Allston	2.2%	6	273
Back Bay/Kenmore*	3.0%	11	364
Boston Central**	3.4%	8	234
Brighton	3.2%	18	564
Charlestown	2.7%	11	407
Codman Square	5.1%	125	2432
East Boston	3.6%	74	2061
Fields Corner	4.5%	53	1166
Grove Hall	6.1%	97	1587
Hyde Park	3.6%	52	1440
Jamaica Plain	4.2%	31	730
Mattapan	5.1%	58	1129
Roslindale	2.8%	31	1111
Roxbury	6.0%	73	1213
Roxbury Crossing	4.8%	18	374
South Boston	5.1%	31	613
South End	3.7%	25	672
Uphams Corner	5.6%	79	1413
West Roxbury	1.0%	7	671

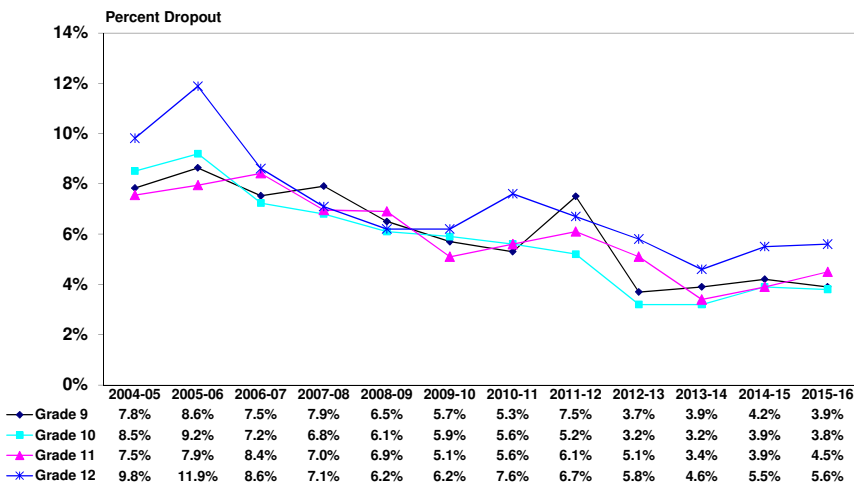
* 02115, 02116, 02215, 02199

** 02108 through 02111, 02113, 02114, 02210 (Downtown, West End, North End, Chinatown)

Q and A Boston Public Schools 2015-2016: Student Dropout Rates

How do Dropout Rates Vary Across Grade Levels?

Annual Dropout Rates by Grade Level: 2004-05 to 2015-16



- Dropout rates across grade levels have fluctuated over the years; the 12th grade dropout rate has been the highest for the last four years.
- Compared to 2014-15, dropout rates for grades 11 and 12 increased by 0.6 and 0.1 points, respectively; while the rates for grades 9 and 10 decreased by 0.3 and 0.1 points, respectively.

How do Dropout Rates Differ Between Competency Determination* (CD) Earners and Students Without a CD?

- Students who did not pass grade 10 MCAS had multiple opportunities to pass MCAS through re-tests and/or MCAS Performance Appeals process before their scheduled graduation date.
- Students who have not yet earned a CD (grade 11: 14.9%; grade 12: 18.5%) are more likely to drop out than students who have fully (grade 11: 0.8%; grade 12: 2.2%) or partially met the CD requirements (grade 11: 3.7%; grade 12: 5.5%).
- Among those dropouts 57 11th graders had already attained or partially attained a CD, and 157 12th graders had done so before dropping out of school.

2015-16 Dropout Rates by CD Attainment Status

Grade	CD Status	Total Enrollment	# of Dropouts	Dropout Rate
11 (Class of 2017)	Met CD*	2,358	20	0.8%
	Partially Met CD**	993	37	3.7%
	Did Not Meet CD	900	134	14.9%
12 (Class of 2016)	Met CD*	2,596	58	2.2%
	Partially Met CD**	1,807	99	5.5%
	Did Not Meet CD	680	126	18.5%

* Earned a scaled score of at least 240 (*Proficient or Advanced*) on both the grade 10 MCAS ELA and Mathematics tests, also earned a minimum of 220 (*Needs Improvement*) on one of the high school Science and Technology/Engineering (STE) tests through the spring 2016 administration.

** Earned a scaled score between 220 and 238 (*Needs Improvement*) on the grade 10 MCAS ELA and/or Mathematics test, and earned at least 220 on one of the high school STE tests through the spring 2016 administration. These students needed to complete an Educational Proficiency Plan (EPP) in ELA and/or Math.

How do Dropout Rates Vary Among Special Populations?

2015-16 Dropout Rates by Special Populations

	Total Enrollment	# of Dropouts	Dropout Rate
Special Education	3,452	180	5.2%
Non-Special Education	15,121	650	4.3%
LEP	3,874	258	6.7%
Non LEP	14,699	572	3.9%
Econ. Disadvantaged*	13,192	539	4.1%
Non Econ. Disadvantaged	5,381	291	5.4%

Annual Dropout Rates for Special Populations: 2010-11 to 2015-16

	2010-11	2011-12	2012-13	2013-14	2014-15	2015-16
Special Education	7.7%	7.5%	6.1%	5.5%	5.5%	5.2%
Non-Special Education	5.7%	6.2%	4.1%	3.4%	4.1%	4.3%
LEP	5.1%	7.1%	5.1%	4.8%	6.0%	6.7%
Non LEP	6.3%	6.3%	4.3%	3.6%	4.0%	3.9%
Low-Income*	5.1%	6.0%	4.2%	3.9%	4.3%	4.1%
Non Low-Income	8.1%	7.7%	5.2%	3.4%	4.5%	5.4%

* Beginning with SY2014-15, Economically Disadvantaged replaced Low-Income group. Econ. Disadvantaged includes students participated in one of the following state-administered programs: SNAP (food stamps); TAFCO (welfare); DCF (foster care); MassHealth (Medicaid).

- The SY2015-16 dropout rates for students with disabilities (SPED) and Limited English Proficient students (LEP) are somewhat higher than for students without disabilities and Non-Limited English Proficient students (0.9 and 2.8 points higher, respectively).
- Economically disadvantaged students saw a 1.3 percentage point lower dropout rate in SY2015-16 than their peers who are not economically disadvantaged. The trend is similar to that of the last year and that of Low-income vs Non Low-income prior to SY2013-14.
- Compared to SY2014-15, dropout rates in SY2015-16 for LEP students increased 0.7 percentage points while the rate for SPED students decreased 0.3 points.
- Over the 6-year reporting period, since 2010-11, all except LEP student group showed a noticeable decrease in their dropout rates.

**Boston Public Schools
Annual Dropout Rate by School: Grades 9-12**

	2009-10		2010-11***		2011-12***		2012-13***		2013-14***		2014-15***		2015-16***	
	%	N	%	N	%	N	%	N	%	N	%	N	%	N
A.C.C.	4.9%	[11/223]	6.5%	[15/231]	4.1%	[9/218]	0.0%	[0/228]	1.3%	[3/227]	2.6%	[6/234]	2.1%	[5/236]
BATA	22.1%	[90/408]	6.0%	[19/315]	10.1%	[36/358]	6.5%	[25/384]	9.9%	[37/373]	12.9%	[50/387]	19.5%	[74/380]
BCLA	1.2%	[5/419]	0.7%	[3/437]	2.6%	[12/470]	1.4%	[7/502]	0.8%	[4/522]	1.2%	[6/520]	1.4%	[7/511]
BDEA	11.8%	[58/491]	17.8%	[100/561]	24.8%	[149/602]	30.7%	[158/514]	16.1%	[78/485]	21.7%	[108/498]	16.6%	[79/477]
Boston Arts Acad	4.1%	[17/416]	1.6%	[6/379]	1.2%	[5/404]	0.7%	[3/411]	0.4%	[2/448]	1.1%	[5/439]	2.1%	[9/434]
Boston Collaborative	NA	NA	NA	NA	NA	NA	NA	NA	NA	NA	NA	NA	6.6%	[20/304]
Boston Green Acad	NA	NA	NA	NA	3.1%	[10/318]	3.9%	[13/330]	3.6%	[12/337]	3.2%	[10/314]	4.7%	[14/297]
Boston Internat'l	8.5%	[19/224]	2.7%	[6/224]	0.7%	[2/270]	2.9%	[8/276]	4.0%	[11/273]	4.2%	[13/307]	2.2%	[7/319]
Boston Latin Acad*	0.2%	[2/1162]	0.7%	[8/1123]	0.6%	[7/1096]	0.5%	[5/1060]	0.0%	[0/1101]	0.3%	[4/1167]	0.4%	[5/1156]
Boston Latin Schl*	0.2%	[3/1606]	0.0%	[0/1591]	0.0%	[0/1549]	0.1%	[1/1570]	0.1%	[1/1571]	0.1%	[1/1609]	0.1%	[1/1639]
Brighton	9.3%	[123/1319]	10.7%	[147/1369]	9.8%	[131/1343]	6.2%	[74/1196]	7.2%	[77/1073]	5.6%	[56/995]	7.6%	[73/960]
Burke	13.9%	[118/851]	10.8%	[75/696]	13.0%	[84/646]	5.5%	[32/578]	4.3%	[22/512]	5.4%	[30/560]	6.3%	[36/569]
CASH	7.8%	[34/434]	6.3%	[26/415]	10.9%	[53/485]	4.2%	[19/449]	2.3%	[10/430]	3.4%	[14/409]	3.2%	[14/442]
Charlestown	8.5%	[85/995]	10.4%	[111/1063]	8.9%	[96/1075]	5.6%	[56/1008]	2.2%	[21/972]	6.7%	[69/1027]	5.3%	[53/1008]
Community Acad	16.7%	[18/108]	23.1%	[27/117]	16.5%	[18/109]	18.6%	[21/113]	11.9%	[13/109]	29.9%	[46/154]	30.2%	[32/106]
Dearborn	NA	NA	NA	NA	NA	NA	NA	NA	0.0%	[0/30]	0.0%	[0/84]	1.9%	[2/106]
Dorchester Acad	12.0%	[58/484]	14.7%	[75/510]	13.2%	[63/476]	6.6%	[31/469]	5.4%	[24/445]	10.8%	[44/408]	15.4%	[22/143]
East Boston	2.4%	[33/1397]	3.2%	[44/1364]	5.2%	[74/1412]	3.7%	[51/1385]	4.3%	[64/1489]	2.6%	[39/1485]	3.8%	[61/1602]
English	2.9%	[22/753]	4.6%	[34/741]	7.3%	[57/783]	12.0%	[83/692]	9.7%	[59/609]	5.1%	[32/630]	8.5%	[53/622]
Excel	7.8%	[32/409]	3.7%	[16/428]	11.5%	[85/741]	4.0%	[27/672]	8.3%	[54/650]	8.8%	[53/602]	6.2%	[36/583]
Fenway	1.7%	[5/293]	1.3%	[4/301]	1.6%	[5/318]	0.6%	[2/320]	0.0%	[0/330]	0.3%	[1/323]	1.2%	[4/339]
Greater Egleston	14.0%	[26/186]	21.4%	[45/210]	20.4%	[55/270]	8.3%	[20/240]	8.7%	[21/242]	4.9%	[12/247]	10.5%	[31/295]
Henderson Upper	NA	NA	NA	NA	NA	NA	0.0%	[0/34]	8.8%	[7/80]	2.2%	[3/134]	0.6%	[1/161]
Horace Mann**	0.0%	[0/33]	0.0%	[0/42]	2.2%	[1/46]	4.7%	[2/43]	9.8%	[4/41]	11.1%	[4/36]	5.3%	[2/38]
Kennedy Acad	0.5%	[1/215]	0.0%	[0/211]	0.0%	[0/220]	0.7%	[2/270]	1.2%	[4/327]	1.4%	[5/366]	2.0%	[7/343]
Lyon 9-12	0.0%	[0/25]	1.7%	[1/60]	1.3%	[1/76]	0.7%	[1/135]	1.5%	[2/131]	1.5%	[2/134]	3.2%	[4/125]
Madison Park	7.0%	[97/1383]	5.3%	[68/1295]	5.4%	[68/1251]	4.2%	[48/1146]	5.0%	[57/1149]	6.8%	[65/952]	6.1%	[54/885]
Margarita Muniz	NA	NA	NA	NA	NA	NA	0.0%	[0/81]	0.6%	[1/156]	2.6%	[6/230]	1.7%	[5/291]
McKinley**	8.3%	[26/314]	14.0%	[43/307]	11.6%	[32/275]	19.1%	[54/282]	8.7%	[22/254]	13.2%	[33/250]	12.0%	[28/234]
New Mission	2.3%	[6/260]	0.0%	[0/249]	0.0%	[0/247]	0.0%	[0/267]	0.0%	[0/280]	0.7%	[2/293]	0.0%	[0/319]
O'Bryant*	0.7%	[7/993]	0.6%	[6/1006]	1.0%	[10/1025]	0.7%	[7/1063]	0.1%	[1/1071]	0.4%	[4/1120]	0.7%	[8/1137]
Quincy Upper	1.4%	[3/213]	2.3%	[5/218]	2.1%	[5/235]	0.0%	[0/227]	0.0%	[0/228]	1.3%	[3/232]	0.0%	[0/224]
Snowden	4.5%	[18/402]	3.7%	[15/403]	8.4%	[37/439]	4.1%	[17/417]	4.5%	[18/399]	1.8%	[7/391]	2.4%	[9/377]
TechBoston Acad	NA	NA	NA	NA	1.5%	[8/518]	0.5%	[3/560]	3.3%	[19/571]	1.7%	[10/579]	2.2%	[13/586]
Urban Science Acad	2.2%	[7/323]	8.7%	[31/357]	7.2%	[50/692]	5.1%	[32/626]	2.9%	[16/545]	4.4%	[23/527]	5.6%	[30/537]
West Roxbury Acad	NA	NA	NA	NA	7.1%	[52/728]	3.4%	[23/686]	5.1%	[34/670]	6.5%	[39/601]	4.7%	[27/574]

Dropout rates, number of dropouts, and total enrollments (excludes transfers out) are shown for each school.

Students who dropped out are attributed to the last school to which they were assigned.

* Examination School

** Special Needs School

*** Beginning with SY2010-11, BPS dropouts who were found enrolled in another district or Charter school based on the statewide October 1 SIMS for the subsequent school year are counted as returned dropouts.

Boston Public Schools

Annual Dropout by Racial/Ethnic Group and Systemwide: 1987-1988 through 2015-2016: Grades 9-12*

	Black		White		Asian		Hispanic		Native American		Multiracial		Systemwide	
	Percent	Number	Percent	Number	Percent	Number	Percent	Number	Percent	Number	Percent	Number	Percent	Number
2015-2016##	4.9%	[357/7243]	3.8%	[86/2258]	1.2%	[21/1773]	5.0%	[359/7139]	4.1%	[3/73]	4.6%	[4/87]	4.5%	[830/18573]
2014-2015##	4.8%	[365/7554]	3.8%	[87/2302]	1.1%	[19/1759]	5.0%	[335/6644]	2.4%	[2/82]	4.7%	[4/85]	4.4%	[812/18426]
2013-2014##	3.7%	[275/7495]	2.9%	[69/2357]	1.4%	[24/1768]	5.1%	[322/6360]	0.0%	[0/56]	4.0%	[11/277]	3.8%	[701/18313]
2012-2013##	4.5%	[355/7826]	3.8%	[87/2313]	2.2%	[40/1815]	5.2%	[319/6127]	11.3%	[6/53]	7.5%	[21/280]	4.5%	[828/18414]
2011-2012##	6.9%	[573/8261]	5.2%	[123/2369]	3.0%	[56/1846]	7.2%	[442/6101]	8.2%	[5/61]	7.2%	[20/277]	6.4%	[1219/18915]
2010-2011##	6.2%	[478/7757]	4.2%	[101/2408]	1.9%	[34/1827]	7.5%	[531/7087]	7.3%	[4/55]	11.0%	[17/155]	6.0%	[1165/19289]
2009-2010#	6.1%	[490/8026]	3.4%	[84/2505]	2.0%	[36/1828]	7.0%	[484/6884]	5.2%	[3/58]	11.2%	[19/169]	5.7%	[1116/19470]
2008-2009#	6.9%	[574/8315]	4.1%	[109/2654]	2.3%	[41/1808]	7.8%	[520/6628]	9.9%	[7/71]	8.2%	[13/159]	6.4%	[1264/19635]
2007-2008#	7.0%	[608/8668]	5.4%	[150/2790]	2.4%	[44/1799]	9.6%	[626/6552]	10.3%	[7/68]	8.8%	[12/137]	7.2%	[1447/20014]
2006-2007#	8.0%	[727/9075]	6.1%	[171/2825]	3.2%	[59/1838]	10.0%	[642/6427]	4.1%	[3/73]	8.1%	[8/99]	7.9%	[1610/20337]
2005-2006****	10.0%	[965/9648]	7.8%	[234/3003]	3.0%	[55/1821]	11.0%	[670/6081]	10.1%	[7/69]	9.3%	[5/54]	9.4%	[1936/20676]
2004-2005****	9.1%	[887/9789]	7.5%	[226/3029]	3.8%	[69/1806]	9.2%	[510/5551]	8.1%	[6/74]	--	[1/5]	8.4%	[1699/20254]
2003-2004***	9.5%	[932/9845]	6.5%	[197/3036]	4.0%	[75/1864]	8.9%	[463/5201]	9.7%	[7/72]	-	-	8.4%	[1674/20018]
2002-2003***	8.8%	[872/9932]	6.7%	[203/3033]	4.4%	[82/1855]	8.5%	[404/4774]	11.4%	[8/70]	-	-	8.0%	[1569/19664]
2001-2002***	7.6%	[756/9923]	6.0%	[185/3065]	3.8%	[73/1924]	8.5%	[395/4629]	9.1%	[7/77]	-	-	7.2%	[1416/19618]
2000-2001***	8.6%	[824/9625]	7.4%	[225/3059]	3.8%	[71/1883]	10.6%	[469/4416]	7.2%	[5/64]	-	-	8.4%	[1594/19052]
1999-2000***	8.7%	[839/9624]	7.1%	[221/3103]	3.9%	[72/1862]	10.3%	[451/4394]	8.2%	[5/61]	-	-	8.3%	[1588/19044]
1998-1999***	9.6%	[899/9337]	8.1%	[254/3153]	5.0%	[92/1840]	11.6%	[498/4288]	10.9%	[6/55]	-	-	9.4%	[1749/18673]
1997-1998***	8.6%	[781/9088]	6.3%	[194/3094]	4.3%	[76/1769]	9.9%	[416/4188]	13.5%	[7/52]	-	-	8.1%	[1474/18191]
1996-1997***	7.7%	[683/8890]	7.3%	[227/3096]	6.3%	[113/1794]	10.2%	[421/4140]	8.2%	[4/49]	-	-	8.1%	[1448/17969]
1995-1996***	7.5%	[649/8626]	5.9%	[182/3102]	3.5%	[62/1796]	8.3%	[325/3925]	13.0%	[7/54]	-	-	7.0%	[1225/17505]
1994-1995**	9.7%	[822/8501]	7.2%	[220/3055]	5.4%	[99/1837]	10.4%	[393/3773]	7.0%	[3/43]	-	-	8.9%	[1537/17209]
1993-1994**	8.1%	[682/8412]	8.6%	[274/3192]	4.3%	[81/1880]	10.3%	[382/3697]	22.4%	[11/49]	-	-	8.3%	[1430/17230]
1992-1993**	9.0%	[745/8319]	8.5%	[284/3328]	3.4%	[65/1888]	10.6%	[379/3567]	21.4%	[12/56]	-	-	8.7%	[1485/17158]
1991-1992**	9.5%	[787/8323]	8.5%	[281/3313]	7.4%	[140/1898]	13.1%	[451/3448]	11.8%	[6/51]	-	-	9.8%	[1655/17033]
1990-1991**	10.3%	[848/8199]	7.6%	[251/3292]	4.8%	[88/1816]	13.5%	[432/3211]	10.0%	[6/60]	-	-	9.8%	[1625/16578]
1989-1990**	10.3%	[833/8118]	9.2%	[319/3485]	5.6%	[98/1753]	13.8%	[409/2971]	15.3%	[9/59]	-	-	10.2%	[1668/16386]
1988-1989	11.2%	[929/8330]	10.7%	[406/3799]	4.7%	[76/1628]	14.7%	[412/2808]	10.0%	[7/70]	-	-	11.0%	[1830/16635]
1987-1988	13.5%	[1145/8502]	13.0%	[541/4156]	6.3%	[97/1545]	17.7%	[481/2713]	16.4%	[12/73]	-	-	13.4%	[2276/16989]

* Transfers from BPS are excluded from these analyses. Dropout rates, number of dropouts, and total populations are shown for each group. Please contact Office of Data and Accountability for data prior to SY1986-1987.

** New methods of counting and reporting dropouts were introduced in 1991-1992 to conform to new guidelines from the Massachusetts Department of Education (MA DOE) and the National Center for Educational Statistics. In order to present consistent historical data, the dropout data were recalculated back to 1989-1990 according to the new methods. The impact of the changes was relatively small (less than one percentage point), but the change does mean that the data for years before 1989-1990 are not directly comparable with the data from more recent years. Note: Effective in 1993-1994, the discharge code '28' ("Special Services", such as commitment to DYS with participation in an approved educational program) is no longer considered a dropout discharge code.

*** For annual rate data from 1995-1996 on, BPS accounts for "returned dropouts" who re-enroll by the following October 1 or process a request to transfer out of the system. 1995-1996 and later data are therefore not directly comparable with data from earlier years.

**** Beginning from 2004-05, students who turn age of 22 are counted as "Other Loss" rather than dropouts. Also, as a result of the revised federal government's reporting categories on student race codes, "Multiracial" category is added. "Multiracial" refers to any student with multiple non-Hispanic race/ethnic codes. Dropout rate is not reported if a student group has fewer than 10 students.

Beginning with SY2006-07, death and expulsion are excluded from the population. Also, BPS Student Discharge Codes have been changed to align with the enrollment status codes used by the MA DESE's SIMS. Hence, caution should be made when comparing data from 2006-07 and later with data from earlier years.

Beginning with SY2010-11, BPS dropouts who were found enrolled in another district or Charter school based on the statewide October 1 SIMS for the subsequent school year are counted as returned dropouts.

Boston Public Schools

Dropout by Racial/Ethnic Group for 9th Grade Cohorts: 1982/86 through 2011/15

	Black		White		Asian		Hispanic		Native American		Multiracial		Systemwide	
	Percent	Number	Percent	Number	Percent	Number	Percent	Number	Percent	Number	Percent	Number	Percent	Number
2011/15***	13.3%	[193/1451]	11.8%	[58/493]	4.0%	[16/398]	16.6%	[196/1180]	**	[1/14]	18.2%	[10/55]	13.2%	[474/3591]
2010/14***	14.6%	[215/1470]	10.0%	[49/488]	5.7%	[22/388]	20.6%	[288/1396]	**	[1/9]	**	[5/24]	15.4%	[580/3775]
2009/13***	15.9%	[252/1582]	11.4%	[56/492]	9.0%	[38/420]	22.8%	[310/1360]	**	[1/11]	**	[11/32]	17.1%	[668/3897]
2008/12***	19.5%	[321/1647]	14.2%	[80/563]	9.5%	[38/402]	23.1%	[307/1327]	**	[7/19]	**	[7/31]	19.1%	[760/3989]
2007/11***	21.6%	[365/1688]	13.8%	[82/594]	7.4%	[30/405]	23.0%	[310/1349]	**	[4/15]	**	[10/37]	19.6%	[801/4088]
2006/10***	21.4%	[384/1796]	11.7%	[66/566]	6.9%	[28/407]	25.2%	[344/1367]	**	[3/9]	**	[10/30]	20.0%	[835/4175]
2005/09***	20.3%	[381/1874]	15.1%	[96/635]	8.2%	[34/415]	27.3%	[370/1356]	**	[4/15]	**	[6/14]	20.7%	[891/4309]
2004/08***	24.1%	[472/1959]	19.9%	[137/687]	11.8%	[47/398]	31.2%	[404/1295]	**	[2/14]			24.4%	[1062/4353]
2003/07***	27.9%	[561/2011]	21.5%	[145/673]	9.9%	[42/426]	29.8%	[365/1226]	**	[6/16]			25.7%	[1119/4352]
2002/06***	24.9%	[519/2087]	17.6%	[117/665]	7.3%	[28/384]	31.0%	[330/1063]	**	[3/12]			23.7%	[997/4211]
2001/05***	26.1%	[540/2067]	21.0%	[140/666]	9.5%	[39/409]	28.2%	[291/1031]	**	[3/20]			24.2%	[1013/4193]
2000/04***	23.8%	[459/1932]	17.6%	[114/646]	7.6%	[29/380]	25.0%	[245/979]	**	[6/15]			21.6%	[853/3952]
1999/03*	20.7%	[422/2036]	19.9%	[141/707]	10.7%	[42/394]	26.9%	[256/953]	**	[5/17]			21.1%	[866/4107]
1998/02*	23.3%	[451/1939]	20.9%	[139/665]	8.0%	[32/402]	28.4%	[260/914]	**	[3/13]			22.5%	[885/3933]
1997/01*	24.1%	[456/1889]	18.3%	[121/662]	10.7%	[40/374]	29.4%	[266/906]	**	[4/12]			23.1%	[887/3843]
1996/00*	25.2%	[460/1822]	22.2%	[142/641]	12.3%	[43/350]	33.4%	[303/907]	**	[4/9]			25.5%	[952/3729]
1995/99*	27.3%	[498/1821]	21.6%	[148/686]	14.6%	[55/378]	31.3%	[268/855]	**	[4/13]			25.9%	[973/3753]
1994/98*	23.9%	[417/1744]	21.0%	[139/661]	9.2%	[31/338]	29.1%	[239/821]	**	[3/9]			23.2%	[829/3573]
1993/97*	27.3%	[458/1678]	24.1%	[142/588]	12.0%	[39/324]	32.7%	[242/471]	**	[2/9]			26.4%	[883/3340]
1992/96*	25.9%	[415/1602]	20.8%	[144/692]	11.5%	[39/338]	25.7%	[189/736]	**	[6/14]			23.4%	[793/3382]
1991/95*	26.2%	[447/1703]	25.4%	[178/702]	12.3%	[41/334]	37.3%	[269/721]	**	[4/11]			27.1%	[939/3471]
1990/94*	26.6%	[422/1585]	27.2%	[182/670]	13.7%	[39/285]	33.8%	[230/680]	**	[7/12]			27.2%	[880/3232]
1989/93*	25.6%	[408/1593]	25.2%	[174/691]	13.3%	[44/332]	38.8%	[264/680]	**	[6/11]			27.1%	[896/3307]
1988/92*	28.9%	[490/1698]	27.7%	[220/794]	9.9%	[34/343]	36.4%	[220/604]	**	[8/15]			28.1%	[972/3454]
1987/91*	31.0%	[515/1663]	29.0%	[238/822]	15.2%	[53/348]	40.5%	[244/602]	**	[9/19]			30.7%	[1059/3454]
1986/90*	33.5%	[608/1814]	31.3%	[287/916]	17.4%	[58/333]	39.9%	[252/631]	**	[8/15]			32.7%	[1213/3709]
1985/89*	31.6%	[577/1825]	33.3%	[337/1013]	17.8%	[53/297]	44.2%	[275/622]	**	[4/14]			33.0%	[1246/3771]
1984/88*	35.6%	[699/1964]	37.9%	[447/1180]	20.7%	[63/305]	48.5%	[311/641]	**	[9/18]			37.2%	[1529/4108]
1983/87*	37.0%	[719/1942]	40.8%	[468/1147]	22.7%	[68/299]	53.8%	[314/584]	**	[9/16]			39.6%	[1578/3988]
1982/86*	38.8%	[819/2111]	40.6%	[516/1271]	24.3%	[72/296]	49.1%	[272/554]	**	[7/19]			39.7%	[1686/4251]

* The beginning (9th grade) year (for September) is shown along with the expected year of graduation for the cohort. Dropout rates, number of dropouts, and total populations are shown for each group.

** The numbers of Native Americans and Multiracial are too small to permit reliable comparison of percentages.

*** From 2004-05 and onward, students who turned 22 and with a discharge code of dropout are counted as "Other Loss" rather than dropouts. Also, as a result of the revised federal government's reporting categories on student race codes a new, "Multiracial" category, is added. "Multiracial" refers to any student with multiple non-Hispanic race/ethnic codes. Since the cohort dropout rate is reported by 9th grade race/ethnicity code, the "Multiracial" category was not used before SY2004-05.

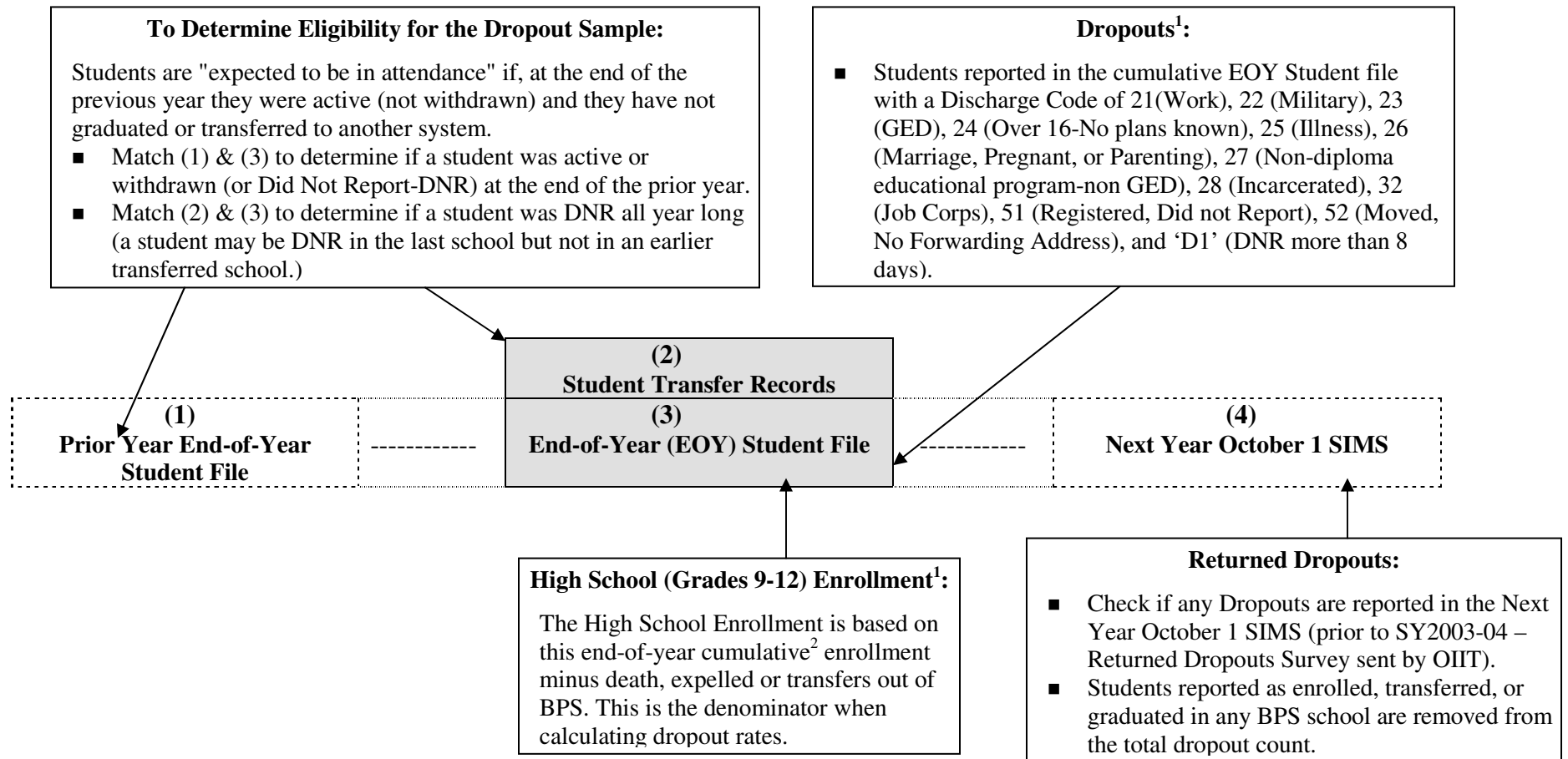
Note: In 1991-1992 and again in 1995-1996 there were changes in the procedures for counting dropouts which were introduced to conform to guidelines from the Massachusetts Department of Elementary and Secondary Education and the National Center for Educational Statistics. Because of the specifics of how cohorts are defined, these changes had a very small impact on cohort dropout rates. For practical purposes, the data across all years are essentially comparable.

Boston Public Schools

Understanding Annual High School (Grades 9-12) Dropout Calculations

The dropout rate for any given year is impacted by four different student datasets (boxes 1 through 4 below). The picture below illustrates the process of calculating the dropout rate for any given school year (in the gray box).

The **final dropout rate** = [All Dropouts – Returned Dropouts] / [Cumulative High School Enrollment – (Transfers out/Expelled/Death)]



¹ Students newly assigned to BPS who never attend are not counted as dropouts and are not included among enrolled students.

² All students who were assigned at any time during the school year.