

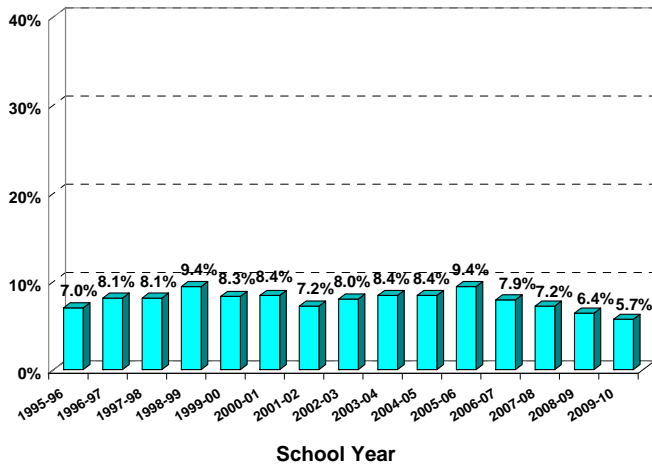
Q and A

Boston Public Schools 2009-2010: Student Dropout Rates

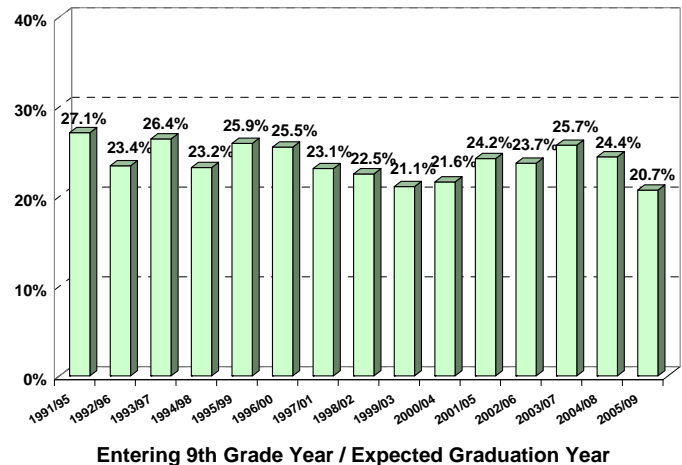
This document presents answers to some of the most frequently asked questions about student dropout in the Boston Public Schools. As defined by the Massachusetts Department of Elementary and Secondary Education (MA DESE) and the National Center for Education Statistics, a student is considered to be a dropout at the end of the school year if he or she is not in school, has not graduated, and has not transferred to another school system*. Please see the attached "Understanding Annual High School Dropout Calculations" for details on the methodology.

How Have Systemwide Dropout Rates Varied Over Time?

Annual Dropout Rates* Systemwide: Grades 9-12



Ninth Grade Cohort Dropout Rates Systemwide



- The annual rate analysis answers the question, "How many students in grades 9-12 drop out in one year?"
- The 9th-12th grade annual dropout rate in 2009-2010 (5.7%) represents a 0.7 percentage point decrease from the previous year, and is the lowest rate the district has seen since 1995-96.
- Although the dropout rate has fluctuated from year to year, data for the past four years suggest a steady downward trend.
- The cohort rate analysis answers the question, "Of the students who entered BPS as 9th graders, what proportion dropped out over the next **five** years?"
- The 9th grade cohort dropout rate decreased to its lowest point ever at 20.7% for the 2005/2009 cohort.

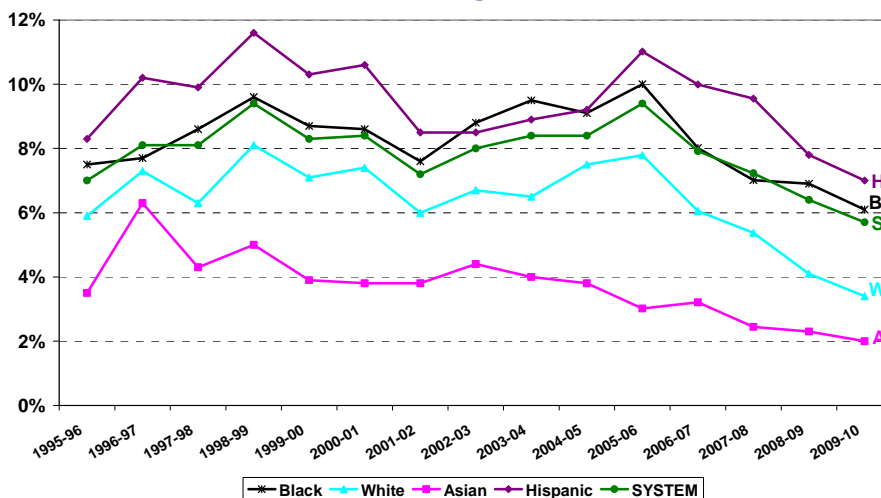
Note: Final annual dropout rates are reported in this document. These final dropout rates differ from the June rates shown in the School Report Cards because they account for changes in student status between June and the following October. This is done to conform with MA DESE guidelines. It should be noted that from SY2003-04 onward, the student status reported in the next school year October 1 Student Information Management System (SIMS) is used for the adjustment rather than identified by school personnel via a survey as done in the previous years. Also, beginning with SY2006-07, BPS Student Discharge Codes have been changed to align with the enrollment status codes used by the MA DESE.

* Starting from SY2006-07, students who died or were expelled are excluded from the population instead of being counted as other loss. Caution should be made when comparing data from 2006-07 and later with data from earlier years.

Q and A Boston Public Schools 2009-2010: Student Dropout Rates

How Have System Wide Dropout Rates Varied Over Time by Racial/Ethnic Group?

Annual Dropout Rate by Racial/Ethnic Group:
1995-96 through 2009-10



	Black	White	Asian	Hispanic	SYSTEM
1995-96	7.5%	5.9%	3.5%	8.3%	7.0%
1996-97	7.7%	7.3%	6.3%	10.2%	8.1%
1997-98	8.6%	6.3%	4.3%	9.9%	8.1%
1998-99	9.6%	8.1%	5.0%	11.6%	9.4%
1999-00	8.7%	7.1%	3.9%	10.3%	8.3%
2000-01	8.6%	7.4%	3.8%	10.6%	8.4%
2001-02	7.6%	6.0%	3.8%	8.5%	7.2%
2002-03	8.8%	6.7%	4.4%	8.5%	8.0%
2003-04	9.5%	6.5%	4.0%	8.9%	8.4%
2004-05	9.1%	7.5%	3.8%	9.2%	8.4%
2005-06	10.0%	7.8%	3.0%	11.0%	9.4%
2006-07	8.0%	6.1%	3.2%	10.0%	7.9%
2007-08	7.0%	5.4%	2.4%	9.6%	7.2%
2008-09	6.9%	4.1%	2.3%	7.8%	6.4%
2009-10	6.1%	3.4%	2.0%	7.0%	5.7%

- The district saw its lowest annual dropout rate in 2009-10 over the fifteen-year period since 1995-96 for students of all racial/ethnic groups.
- Additionally, over the one-year period between 2008-09 and 2009-10, dropout rates for every group saw a decline. Black and Hispanic students saw the greatest improvement, each with a reduction of 0.8 percentage points in their dropout rate.

How Do Dropout Rates Vary by Racial/Ethnic Group and Gender?

Annual Dropout Rates by Racial/Ethnic Group and Gender: Grades 9-12, 2009-2010

	Overall		Male		Female	
	Percent	Number	Percent	Number	Percent	Number
Black	6.1%	490	6.6%	266	5.6%	224
White	3.4%	84	4.6%	59	2.0%	25
Asian	2.0%	36	1.7%	16	2.2%	20
Hispanic	7.0%	484	7.8%	276	6.2%	208
TOTALS**	5.7%	1,116	6.3%	626	5.1%	490

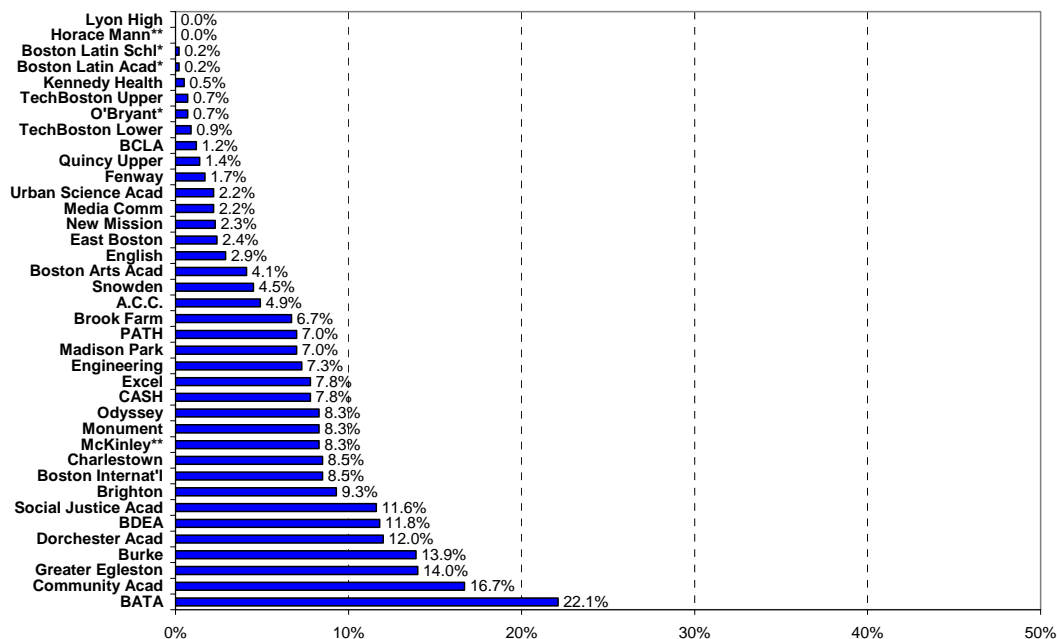
** Totals include 3 Native American and 19 Multiracial dropouts who are not shown separately by gender.

- Overall, more males than females dropped out.
- The dropout rate is lowest among Asian male students and highest among male Hispanics.
- Gender differences are most pronounced among White students.

Q and A Boston Public Schools 2009-2010: Student Dropout Rates

How do Dropout Rates Differ Across Schools?

Annual Dropout Rate by School: Grades 9-12, 2009-10



- Dropout rates vary substantially across schools.
- Dropout rates range from a low of 0% to a high of 22.1%.
- School enrollments in grades 9-12 ranged from 25 to over 1,600.

* Examination School ** Special Needs School. Note: Students who dropped out are attributed to the last school to which they were assigned.

How do Dropout Rates Vary Across Neighborhoods?

- Dropout rates vary substantially according to where students live.
- The percentage of dropouts varies from a low of 1.3% in West Roxbury to a high of 8% in Roxbury.
- There is also considerable variation in the number of students from each neighborhood who attend Boston Public Schools.

Annual Dropout Rate by Neighborhood (Zip Code): Grades 9-12, 2009-2010

	Percent	Number	Students in Neighborhood
Allston	4.9%	13	267
Back Bay/Kenmore*	3.1%	12	383
Boston Central**	3.4%	9	264
Brighton	5.5%	32	583
Charlestown	5.3%	19	357
Codman Square	6.6%	170	2587
East Boston	2.6%	41	1558
Fields Corner	6.8%	84	1240
Grove Hall	7.6%	123	1608
Hyde Park	4.2%	56	1341
Jamaica Plain	4.8%	39	815
Mattapan	5.8%	84	1441
Roslindale	5.4%	64	1189
Roxbury	8.0%	115	1440
Roxbury Crossing	7.1%	37	523
South Boston	5.1%	41	808
South End	5.7%	36	637
Uphams Corner	7.4%	131	1771
West Roxbury	1.3%	8	622

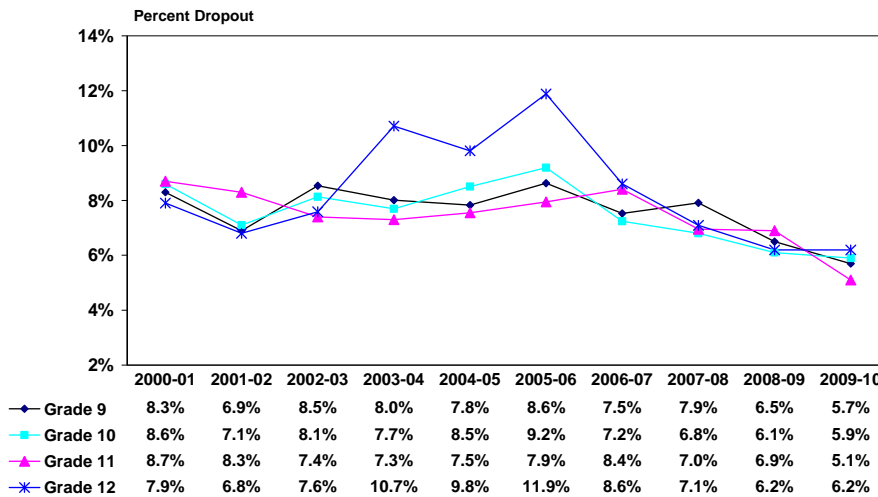
* 02115, 02116, 02215, 02199

** 02108 through 02111, 02113, 02114, 02210 (Downtown, West End, North End, Chinatown)

Q and A Boston Public Schools 2009-2010: Student Dropout Rates

How do Dropout Rates Vary Across Grade Levels?

Annual Dropout Rates by Grade Level: 2000-01 to 2009-10



- Dropout rates across grade levels have fluctuated over the years, but a downward trend is seen since SY2007-08.
- 2009-10 had the lowest dropout rate over this 10-year period for all grade levels.
- Compared to 2008-09, the dropout rates for all but grade 12 declined; the differences ranged from a low of 0.2 percentage points in grade 10 to a high of 1.8 percentage points in grade 11. The dropout rate for grade 12 remained unchanged.

How do Dropout Rates Differ Between Competency Determination (CD) Earners and Students without a CD?

- Students who have not yet earned a CD are more likely to drop out than students who fully or partially met the CD requirements.
- Among those who dropped out, about 30% of juniors had already attained or partially attained a CD, and about 21% of seniors had done so.

2009-10 Dropout Rates and % of Dropouts by CD Attainment Status

Grade	CD Status	Total Enrollment	# of Dropouts	Dropout Rate	% of All Dropouts
11 (Class of 2011)	Met CD*	2,022	20	1.0%	8.7%
	Partially Met CD**	1,334	49	3.7%	21.4%
	Did Not Meet CD	1,115	160	14.3%	69.9%
12 (Class of 2010)	Met CD*	1,978	23	1.2%	7.5%
	Partially Met CD**	1,806	43	2.4%	14.0%
	Did Not Meet CD	1,220	242	19.8%	78.6%

* Earned a scaled score of at least 240 (*Proficient or Advanced*) on both the grade 10 MCAS ELA and Mathematics tests, also earned a minimum of 220 (*Needs Improvement*) on one of the high school Science and Technology/Engineering (STE) tests through the spring 2010 administration.

** Earned a scaled score between 220 and 238 (*Needs Improvement*) on the grade 10 MCAS ELA and/or Mathematics test, and earned at least 220 on one of the high school STE test s through the spring 2010 administration. These students needed to complete an Educational Proficiency Plan (EPP) in ELA and/or Math.

How do Dropout Rates Vary Among Special Populations?

2009-10 Dropout Rates and % of Dropouts for Special Populations

	Total Enrollment	# of Dropouts	Dropout Rate	% of All Dropouts
Special Education	3,528	181	5.1%	16.2%
Non-Special Education	15,942	935	5.9%	83.8%
LEP	3,362	173	5.1%	15.5%
Non LEP	16,108	943	5.9%	84.5%
Low-Income	13,254	608	4.6%	54.5%
Non Low-Income	6,216	508	8.2%	45.5%

Annual Dropout Rates for Special Populations: 2006-07 to 2009-10

	2006-07	2007-08	2008-09	2009-10
Special Education	9.8%	8.9%	9.2%	5.1%
Non-Special Education	7.5%	6.9%	5.8%	5.9%
LEP	10.4%	7.4%	6.2%	5.1%
Non LEP	7.5%	7.2%	6.5%	5.9%
Low-Income	5.1%	5.4%	4.9%	4.6%
Non Low-Income	12.0%	10.3%	9.2%	8.2%

- The SY2009-10 dropout rates for students with disabilities (SPED) and Limited English Proficient (LEP) students are slightly lower than for students without disabilities and Non-LEP students.
- Low-Income status appears not to be associated with a student's decision to drop out. High school students living in Non low-income families dropped out of school almost double the rate of their peers from low-income families.
- Compared to SY2008-09, the dropout rates in SY2009-10 for all subgroups within the special populations category declined except the Non-SPED group. SPED students saw the most improvement with a 4.1 percentage point decrease.
- All subgroups show a significant decrease in the dropout rate since 2006-07.

Boston Public Schools

Annual Dropout by Racial/Ethnic Group and Systemwide: 1982-1983 through 2009-2010: Grades 9-12*

	Black		White		Asian		Hispanic		Native American		Multiracial		Systemwide	
	Percent	Number	Percent	Number	Percent	Number	Percent	Number	Percent	Number	Percent	Number	Percent	Number
2009-2010#	6.1%	[490/8026]	3.4%	[84/2505]	2.0%	[36/1828]	7.0%	[484/6884]	5.2%	[3/58]	11.2%	[19/169]	5.7%	[1116/19470]
2008-2009#	6.9%	[574/8315]	4.1%	[109/2654]	2.3%	[41/1808]	7.8%	[520/6628]	9.9%	[7/71]	8.2%	[13/159]	6.4%	[1264/19635]
2007-2008#	7.0%	[608/8668]	5.4%	[150/2790]	2.4%	[44/1799]	9.6%	[626/6552]	10.3%	[7/68]	8.8%	[12/137]	7.2%	[1447/20014]
2006-2007#	8.0%	[727/9075]	6.1%	[171/2825]	3.2%	[59/1838]	10.0%	[642/6427]	4.1%	[3/73]	8.1%	[8/99]	7.9%	[1610/20337]
2005-2006****	10.0%	[965/9648]	7.8%	[234/3003]	3.0%	[55/1821]	11.0%	[670/6081]	10.1%	[7/69]	9.3%	[5/54]	9.4%	[1936/20676]
2004-2005****	9.1%	[887/9789]	7.5%	[226/3029]	3.8%	[69/1806]	9.2%	[510/5551]	8.1%	[6/74]	--	[1/5]	8.4%	[1699/20254]
2003-2004***	9.5%	[932/9845]	6.5%	[197/3036]	4.0%	[75/1864]	8.9%	[463/5201]	9.7%	[7/72]	-	-	8.4%	[1674/20018]
2002-2003***	8.8%	[872/9932]	6.7%	[203/3033]	4.4%	[82/1855]	8.5%	[404/4774]	11.4%	[8/70]	-	-	8.0%	[1569/19664]
2001-2002***	7.6%	[756/9923]	6.0%	[185/3065]	3.8%	[73/1924]	8.5%	[395/4629]	9.1%	[7/77]	-	-	7.2%	[1416/19618]
2000-2001***	8.6%	[824/9625]	7.4%	[225/3059]	3.8%	[71/1883]	10.6%	[469/4416]	7.2%	[5/64]	-	-	8.4%	[1594/19052]
1999-2000***	8.7%	[839/9624]	7.1%	[221/3103]	3.9%	[72/1862]	10.3%	[451/4394]	8.2%	[5/61]	-	-	8.3%	[1588/19044]
1998-1999***	9.6%	[899/9337]	8.1%	[254/3153]	5.0%	[92/1840]	11.6%	[498/4288]	10.9%	[6/55]	-	-	9.4%	[1749/18673]
1997-1998***	8.6%	[781/9088]	6.3%	[194/3094]	4.3%	[76/1769]	9.9%	[416/4188]	13.5%	[7/52]	-	-	8.1%	[1474/18191]
1996-1997***	7.7%	[683/8890]	7.3%	[227/3096]	6.3%	[113/1794]	10.2%	[421/4140]	8.2%	[4/49]	-	-	8.1%	[1448/17969]
1995-1996***	7.5%	[649/8626]	5.9%	[182/3102]	3.5%	[62/1796]	8.3%	[325/3925]	13.0%	[7/54]	-	-	7.0%	[1225/17505]
1994-1995**	9.7%	[822/8501]	7.2%	[220/3055]	5.4%	[99/1837]	10.4%	[393/3773]	7.0%	[3/43]	-	-	8.9%	[1537/17209]
1993-1994**	8.1%	[682/8412]	8.6%	[274/3192]	4.3%	[81/1880]	10.3%	[382/3697]	22.4%	[11/49]	-	-	8.3%	[1430/17230]
1992-1993**	9.0%	[745/8319]	8.5%	[284/3328]	3.4%	[65/1888]	10.6%	[379/3567]	21.4%	[12/56]	-	-	8.7%	[1485/17158]
1991-1992**	9.5%	[787/8323]	8.5%	[281/3313]	7.4%	[140/1898]	13.1%	[451/3448]	11.8%	[6/51]	-	-	9.8%	[1655/17033]
1990-1991**	10.3%	[848/8199]	7.6%	[251/3292]	4.8%	[88/1816]	13.5%	[432/3211]	10.0%	[6/60]	-	-	9.8%	[1625/16578]
1989-1990**	10.3%	[833/8118]	9.2%	[319/3485]	5.6%	[98/1753]	13.8%	[409/2971]	15.3%	[9/59]	-	-	10.2%	[1668/16386]
1988-1989	11.2%	[929/8330]	10.7%	[406/3799]	4.7%	[76/1628]	14.7%	[412/2808]	10.0%	[7/70]	-	-	11.0%	[1830/16635]
1987-1988	13.5%	[1145/8502]	13.0%	[541/4156]	6.3%	[97/1545]	17.7%	[481/2713]	16.4%	[12/73]	-	-	13.4%	[2276/16989]
1986-1987	13.4%	[1167/8735]	14.3%	[659/4621]	8.0%	[123/1536]	18.0%	[482/2678]	17.6%	[13/74]	-	-	13.9%	[2444/17644]
1985-1986	14.4%	[1293/8963]	14.9%	[738/4944]	9.4%	[140/1496]	18.9%	[493/2605]	15.6%	[10/64]	-	-	14.8%	[2674/18072]
1984-1985	17.0%	[1637/9644]	16.9%	[923/5465]	9.7%	[150/1542]	22.9%	[582/2537]	20.0%	[13/65]	-	-	17.2%	[3302/19253]
1983-1984	15.4%	[1500/9711]	16.5%	[922/5582]	12.2%	[175/1440]	19.8%	[470/2379]	31.3%	[25/80]	-	-	16.1%	[3092/19192]
1982-1983	14.3%	[1433/10008]	16.3%	[1033/6333]	11.8%	[172/1462]	16.8%	[377/2238]	11.9%	[10/84]	-	-	15.0%	[3025/20125]

* Transfers from BPS are excluded from these analyses. Dropout rates, number of dropouts, and total populations are shown for each group.

** New methods of counting and reporting dropouts were introduced in 1991-1992 to conform to new guidelines from the Massachusetts Department of Education (MA DOE) and the National Center for Educational Statistics. In order to present consistent historical data, the dropout data were recalculated back to 1989-1990 according to the new methods. The impact of the changes was relatively small (less than one percentage point), but the changes do mean that the data for years before 1989-1990 are not directly comparable with the data from more recent years. Note: Effective in 1993-1994, the discharge code '28' ("Special Services", such as commitment to DYS with participation in an approved educational program) is no longer considered a dropout discharge code.

*** For annual rate data from 1995-1996 on, BPS accounts for "returned dropouts" who re-enroll by the following October 1 or process a request to transfer out of the system. 1995-1996 and later data are therefore not directly comparable with data from earlier years.

**** Beginning from 2004-05, students who turn age of 22 are counted as "Other Loss" rather than dropouts. Also, as a result of the revised federal government's reporting categories on student race codes, "Multiracial" category is added. "Multiracial" refers to any student with multiple non-Hispanic race/ethnic codes. Dropout rate is not reported if a student group has fewer than 10 students.

Beginning with SY2006-07, death and expulsion are excluded from the population. Also, BPS Student Discharge Codes have been changed to align with the enrollment status codes used by the MA DESE's SIMS. Hence, caution should be made when comparing data from 2006-07 and later with data from earlier years.

Boston Public Schools

Dropout by Racial/Ethnic Group for 9th Grade Cohorts: 1979/83 through 2005/09

	Black		White		Asian		Hispanic		Native American		Multiracial		Systemwide	
	Percent	Number	Percent	Number	Percent	Number	Percent	Number	Percent	Number	Percent	Number	Percent	Number
2005/09***	20.3%	[381/1874]	15.1%	[96/635]	8.2%	[34/415]	27.3%	[370/1356]	**	[4/15]	**	[6/14]	20.7%	[891/4309]
2004/08***	24.1%	[472/1959]	19.9%	[137/687]	11.8%	[47/398]	31.2%	[404/1295]	**	[2/14]			24.4%	[1062/4353]
2003/07***	27.9%	[561/2011]	21.5%	[145/673]	9.9%	[42/426]	29.8%	[365/1226]	**	[6/16]			25.7%	[1119/4352]
2002/06***	24.9%	[519/2087]	17.6%	[117/665]	7.3%	[28/384]	31.0%	[330/1063]	**	[3/12]			23.7%	[997/4211]
2001/05***	26.1%	[540/2067]	21.0%	[140/666]	9.5%	[39/409]	28.2%	[291/1031]	**	[3/20]			24.2%	[1013/4193]
2000/04***	23.8%	[459/1932]	17.6%	[114/646]	7.6%	[29/380]	25.0%	[245/979]	**	[6/15]			21.6%	[853/3952]
1999/03*	20.7%	[422/2036]	19.9%	[141/707]	10.7%	[42/394]	26.9%	[256/953]	**	[5/17]			21.1%	[866/4107]
1998/02*	23.3%	[451/1939]	20.9%	[139/665]	8.0%	[32/402]	28.4%	[260/914]	**	[3/13]			22.5%	[885/3933]
1997/01*	24.1%	[456/1889]	18.3%	[121/662]	10.7%	[40/374]	29.4%	[266/906]	**	[4/12]			23.1%	[887/3843]
1996/00*	25.2%	[460/1822]	22.2%	[142/641]	12.3%	[43/350]	33.4%	[303/907]	**	[4/9]			25.5%	[952/3729]
1995/99*	27.3%	[498/1821]	21.6%	[148/686]	14.6%	[55/378]	31.3%	[268/855]	**	[4/13]			25.9%	[973/3753]
1994/98*	23.9%	[417/1744]	21.0%	[139/661]	9.2%	[31/338]	29.1%	[239/821]	**	[3/9]			23.2%	[829/3573]
1993/97*	27.3%	[458/1678]	24.1%	[142/588]	12.0%	[39/324]	32.7%	[242/471]	**	[2/9]			26.4%	[883/3340]
1992/96*	25.9%	[415/1602]	20.8%	[144/692]	11.5%	[39/338]	25.7%	[189/736]	**	[6/14]			23.4%	[793/3382]
1991/95*	26.2%	[447/1703]	25.4%	[178/702]	12.3%	[41/334]	37.3%	[269/721]	**	[4/11]			27.1%	[939/3471]
1990/94*	26.6%	[422/1585]	27.2%	[182/670]	13.7%	[39/285]	33.8%	[230/680]	**	[7/12]			27.2%	[880/3232]
1989/93*	25.6%	[408/1593]	25.2%	[174/691]	13.3%	[44/332]	38.8%	[264/680]	**	[6/11]			27.1%	[896/3307]
1988/92*	28.9%	[490/1698]	27.7%	[220/794]	9.9%	[34/343]	36.4%	[220/604]	**	[8/15]			28.1%	[972/3454]
1987/91*	31.0%	[515/1663]	29.0%	[238/822]	15.2%	[53/348]	40.5%	[244/602]	**	[9/19]			30.7%	[1059/3454]
1986/90*	33.5%	[608/1814]	31.3%	[287/916]	17.4%	[58/333]	39.9%	[252/631]	**	[8/15]			32.7%	[1213/3709]
1985/89*	31.6%	[577/1825]	33.3%	[337/1013]	17.8%	[53/297]	44.2%	[275/622]	**	[4/14]			33.0%	[1246/3771]
1984/88*	35.6%	[699/1964]	37.9%	[447/1180]	20.7%	[63/305]	48.5%	[311/641]	**	[9/18]			37.2%	[1529/4108]
1983/87*	37.0%	[719/1942]	40.8%	[468/1147]	22.7%	[68/299]	53.8%	[314/584]	**	[9/16]			39.6%	[1578/3988]
1982/86*	38.8%	[819/2111]	40.6%	[516/1271]	24.3%	[72/296]	49.1%	[272/554]	**	[7/19]			39.7%	[1686/4251]
1981/85*	36.5%	[794/2175]	40.0%	[606/1514]	29.3%	[79/270]	49.9%	[254/509]	**	[10/19]			38.8%	[1743/4487]
1980/84*	35.2%	[834/2370]	38.4%	[628/1636]	21.6%	[54/250]	48.3%	[243/503]	**	[4/16]			36.9%	[1763/4775]
1979/83*	33.0%	[720/2179]	33.5%	[574/1712]	12.9%	[26/202]	42.5%	[214/504]	**	[4/7]			33.3%	[1538/4614]

* The beginning (9th grade) year (for September) is shown along with the expected year of graduation for the cohort. Dropout rates, number of dropouts, and total populations are shown for each group.

** The numbers of Native Americans and Multiracial are too small to permit reliable comparison of percentages.

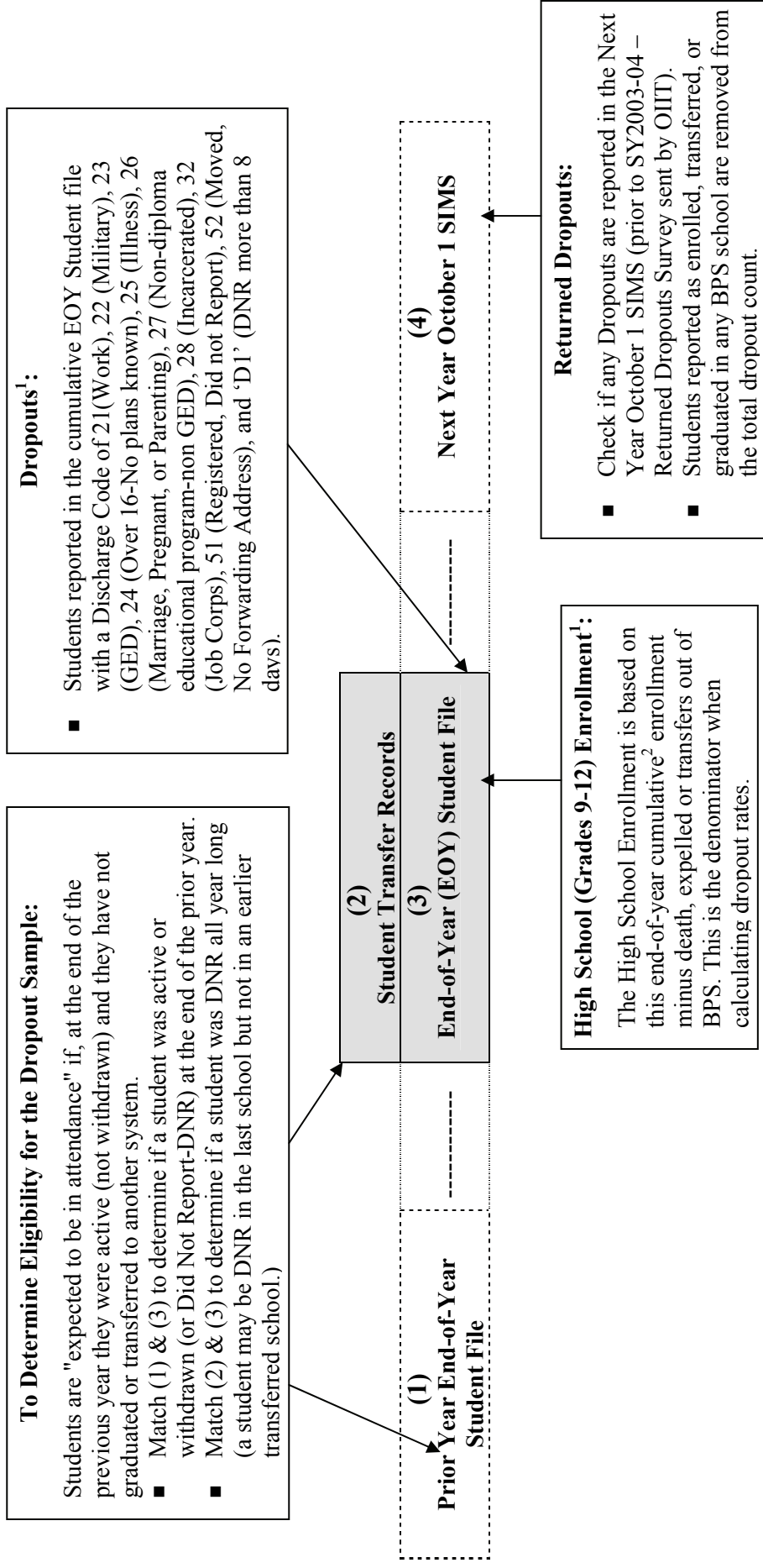
*** From 2004-05 and onward, students who turned 22 and with a discharge code of dropout are counted as "Other Loss" rather than dropouts. Also, as a result of the revised federal government's reporting categories on student race codes a new, "Multiracial" category, is added. "Multiracial" refers to any student with multiple non-Hispanic race/ethnic codes. Since the cohort dropout rate is reported by 9th grade race/ethnicity code, the "Multiracial" category was not used before SY2004-05.

Note: In 1991-1992 and again in 1995-1996 there were changes in the procedures for counting dropouts which were introduced to conform to guidelines from the Massachusetts Department of Elementary and Secondary Education and the National Center for Educational Statistics. Because of the specifics of how cohorts are defined, these changes had a very small impact on cohort dropout rates. For practical purposes, the data across all years are essentially comparable.

Boston Public Schools Understanding Annual High School (Grades 9-12) Dropout Calculations

The dropout rate for any given year is impacted by four different student datasets (boxes 1 through 4 below). The picture below illustrates the process of calculating the dropout rate for any given school year (in the gray box).

The **final dropout rate** = [All Dropouts – Returned Dropouts] / [Cumulative High School Enrollment – (Transfers out/Expelled/Death)]



¹ Students newly assigned to BPS who never attend are not counted as dropouts and are not included among enrolled students.

² All students who were assigned at any time during the school year.