



# Update On Columbia Point School Properties

*Office of the Superintendent*

Makeeba McCreary, EdD  
Managing Director & Sr. Advisor of External Affairs

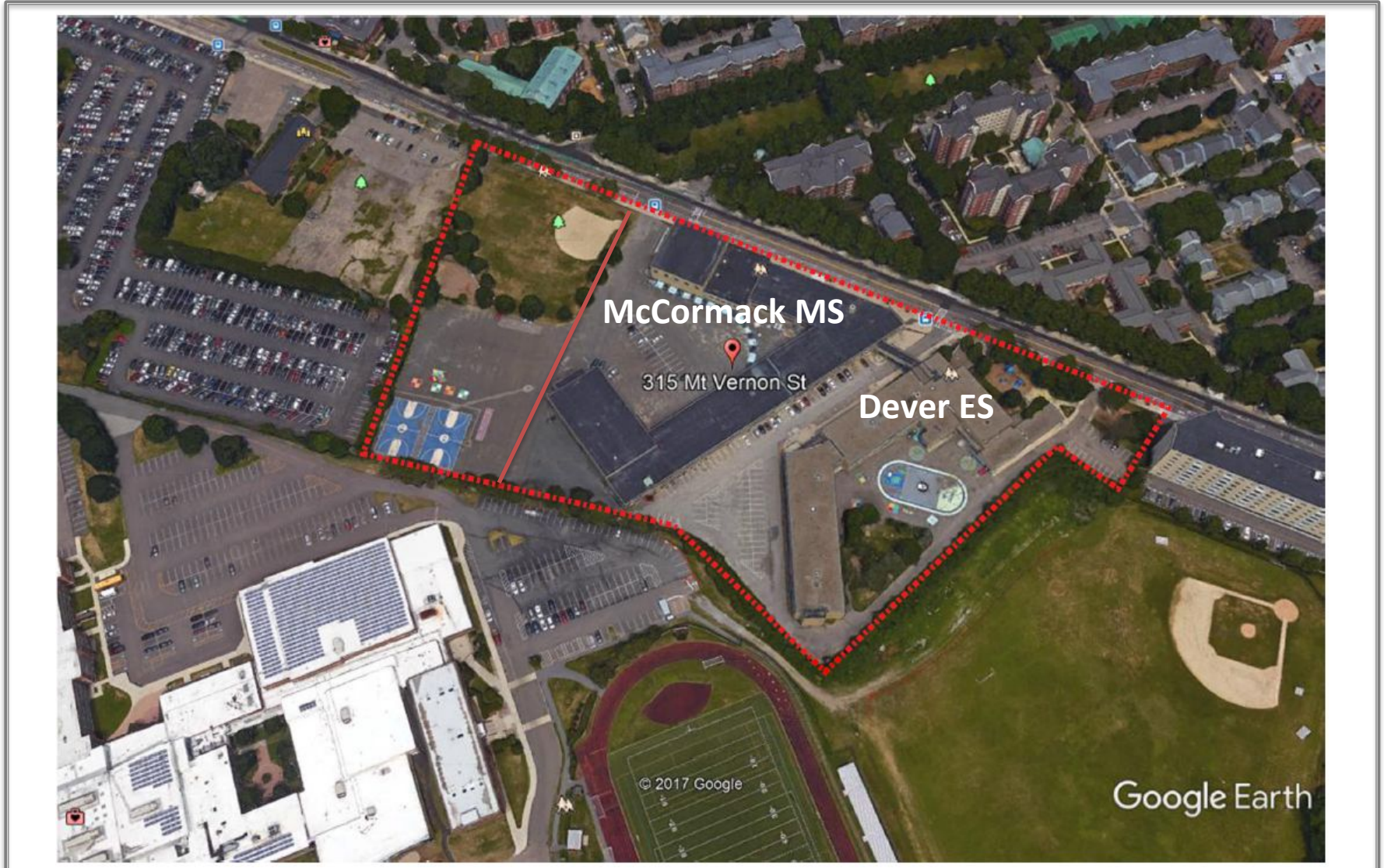
Presentation to Boston School Committee  
April 11, 2018

# Agenda:

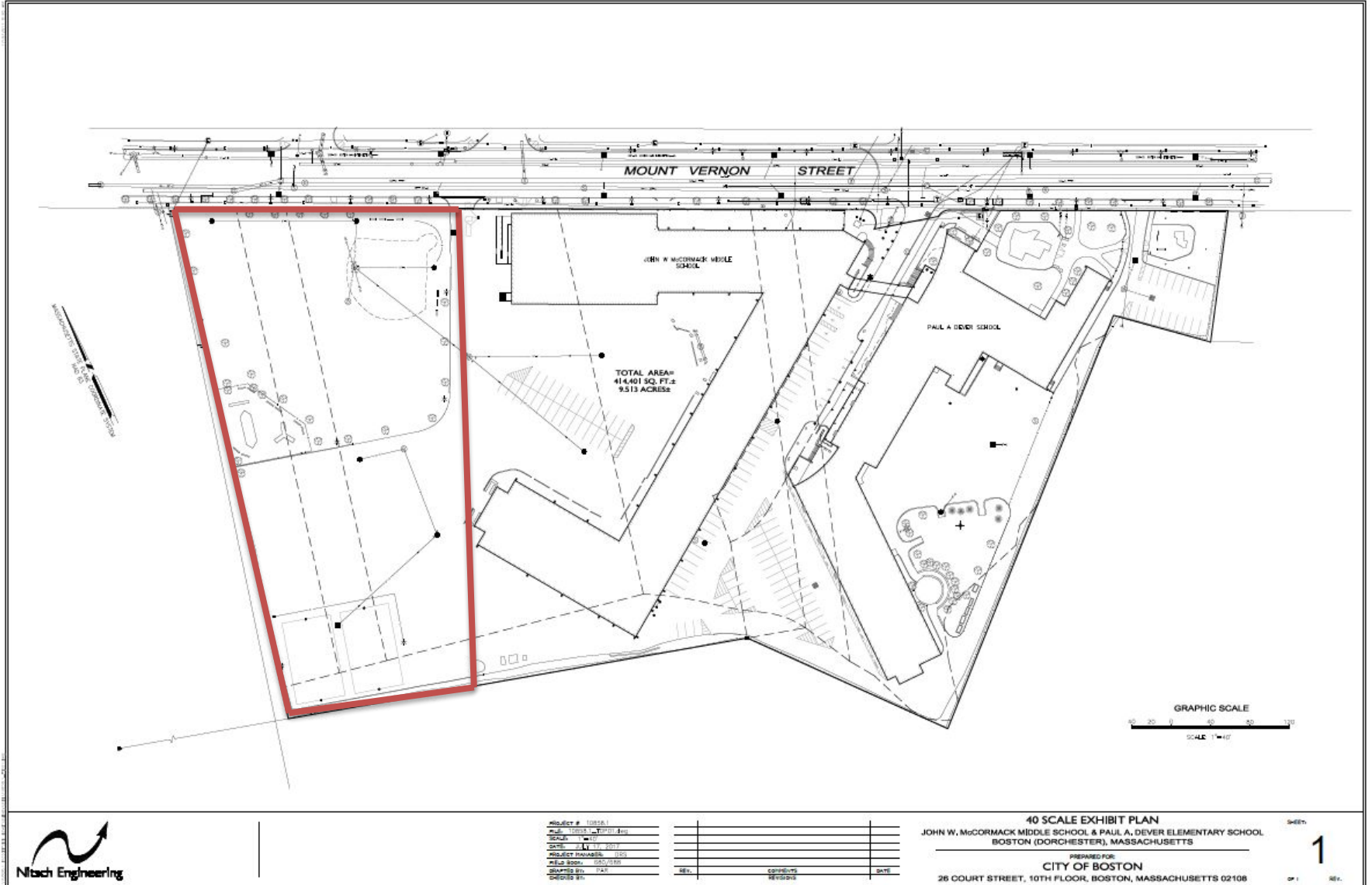
## ■ Rationale for Subdivision

- Maximizing use of an asset to investigate potential opportunities for public-private partnerships designed to improve overall student and community experience(s)
- Potential for educational use that would benefit 1.) the McCormack /Dever School population, 2.) the entire district and 3.) the surrounding communities
- Preserves options for potential BPS projects at the McCormack and Dever in the future

# McCormack Middle School



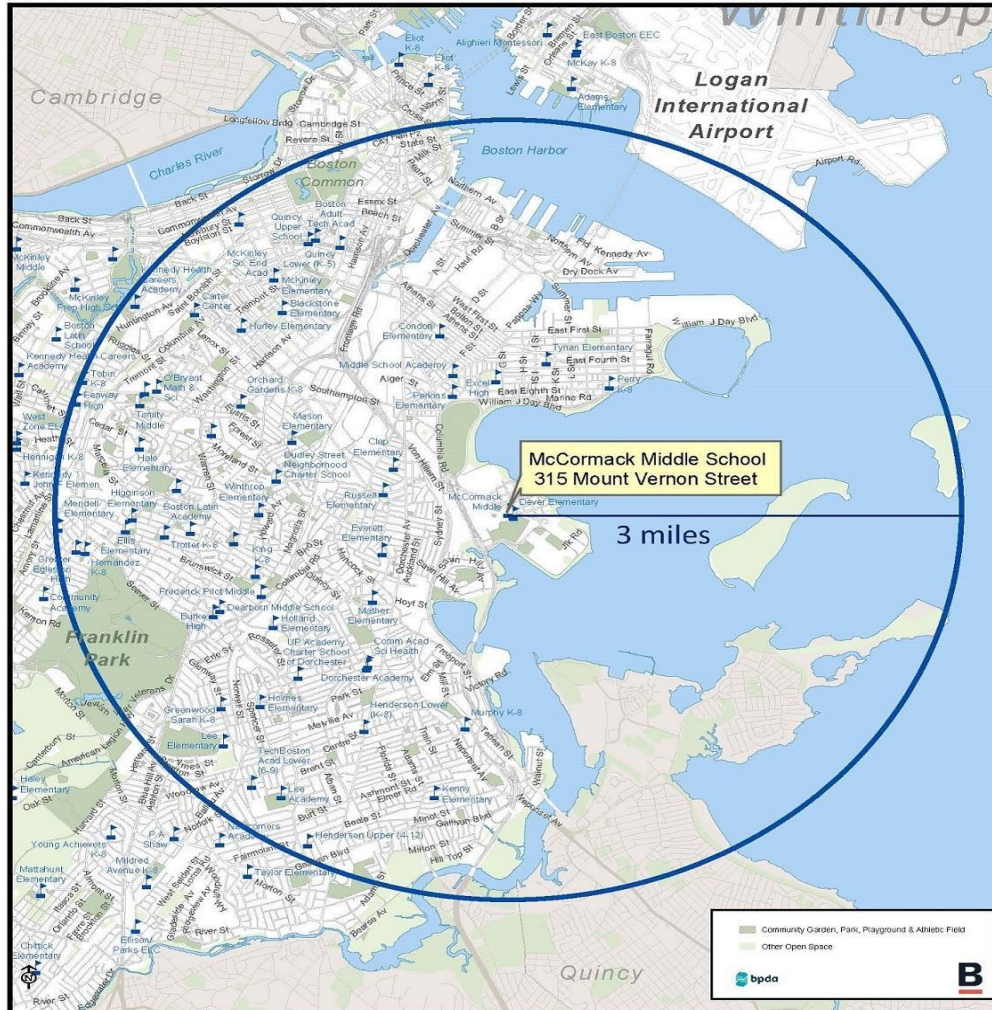
# Existing Site Condition – Site Survey





# Existing Site Condition – Site Survey

McCormack Middle School - 315 Mount Vernon Street



## Next Steps:

1. School Committee votes to subdivide the site and surplus the land
2. Care and custody of site transfers to Department of Neighborhood Development (DND)
3. Draft RFP created with feedback from School Committee
4. BPS/DND to hold a meeting with community to present the idea of a potential public private partnership, to gain feedback and to review draft criteria for RFP
5. Advertise Request for Proposals and review eligible submissions
6. Inform Community of results of Proposal Review & project particulars (Project Team, public & district benefit, cost, impact, schedule)
7. Present recommendations to School Committee
8. Through the Public Facilities Commission, designate selected proposal for long-term ground lease
9. Estimated timeframe for the above action items (6-9 months)

## Requested School Committee Action:

### Approval to:

- To subdivide the site and to surplus the parcel so DND can issue an RFP for the new parcel.
- RFP language would restrict review to responses that only propose a benefit to BPS and surrounding community.
- If no advantageous responses are received the land would be returned to BPS Inventory.