



Spring 2014 MCAS and Accountability Results

Presentation to School Committee
October 1, 2014



Proficiency Rates: English Language Arts

English Language Arts % Proficient & Advanced												
	BPS								State			
	2008	2009	2010	2011	2012	2013	2014	2014-2013 Difference	7-Year Trends	2014	2014-2013 Difference	7-Year Trends
Grade 3	29%	31%	37%	35%	34%	32%	36%	4	7	57%	0	1
Grade 4	25%	30%	30%	30%	31%	29%	31%	2	6	54%	1	5
Grade 5	37%	38%	41%	43%	38%	45%	41%	-4	4	64%	-2	3
Grade 6	43%	43%	44%	42%	38%	42%	44%	2	1	68%	1	1
Grade 7	48%	48%	52%	54%	50%	52%	52%	0	4	72%	0	3
Grade 8	57%	59%	58%	60%	64%	58%	63%	5	6	79%	1	4
Grade 10	58%	64%	60%	67%	73%	79%	76%	-3	18	90%	-1	16
All Grades	42%	45%	46%	47%	46%	47%	49%	2	7	69%	0	5

Exceed or equal State gains

- Gains in Grade 3 for the first time since 2010
- Gains in grades 4,6, and 8 as well
- 7-year trend: gains across all grades, and in all cases, BPS gains exceed state gains, except Grade 6 where both jurisdictions saw a 1-point gain.

Proficiency Rates: Math

Mathematics % Proficient & Advanced												
	BPS									State		
	2008	2009	2010	2011	2012	2013	2014	2014-2013 Difference	7-Year Trends	2014	2014-2013 Difference	7-Year Trends
Grade 3	36%	33%	43%	41%	39%	47%	53%	6	17	68%	2	7
Grade 4	30%	27%	28%	29%	30%	31%	38%	7	8	52%	0	3
Grade 5	33%	33%	39%	42%	39%	42%	41%	-1	8	61%	0	9
Grade 6	32%	33%	38%	36%	43%	43%	38%	-5	6	60%	-1	4
Grade 7	28%	28%	38%	33%	34%	36%	34%	-2	6	50%	-2	3
Grade 8	34%	28%	34%	34%	35%	37%	37%	0	3	52%	-3	3
Grade 10	59%	62%	60%	62%	65%	64%	64%	0	5	79%	-1	7
All Grades	36%	35%	40%	39%	40%	42%	44%	2	8	60%	1	5

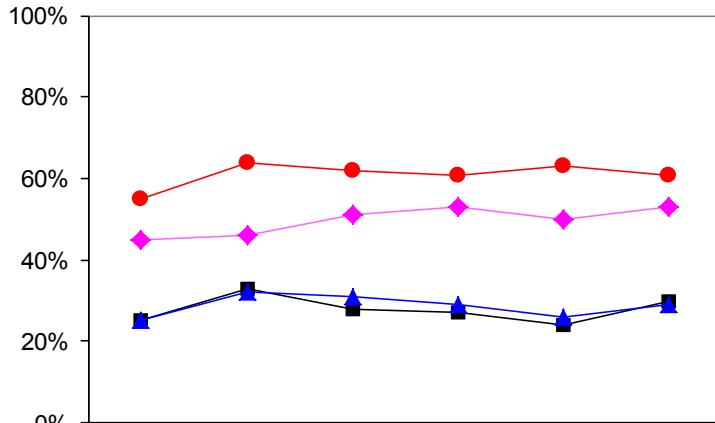
Exceed or equal State gains

- For the first time, a majority (53%) of 3rd graders are proficient in Math.
- Students in grade 4 also made progress.
- In all other grades however, the rate remained unchanged or declined.
- 7-year trends show progress greater than the state in grades 3,4, 6 and 7



Achievement Gaps:

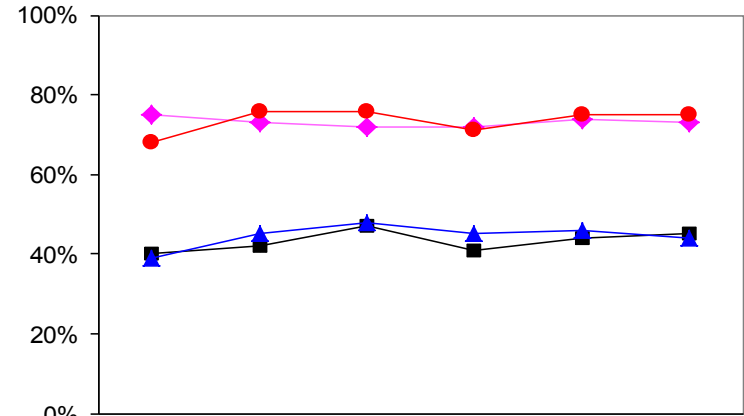
MCAS Grade 3 ELA Results



■ AA/Black
 ◆ Asian
 ▲ Latino/Hispanic
 ● White

2009	2010	2011	2012	2013	2014*
25%	33%	28%	27%	24%	30%
45%	46%	51%	53%	50%	53%
25%	32%	31%	29%	26%	29%
55%	64%	62%	61%	63%	61%

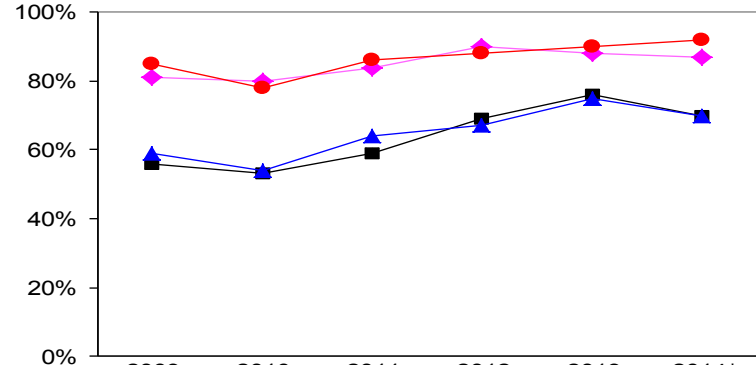
MCAS Grade 7 ELA Results



■ AA/Black
 ◆ Asian
 ▲ Latino/Hispanic
 ● White

2009	2010	2011	2012	2013	2014*
40%	42%	47%	41%	44%	45%
75%	73%	72%	72%	74%	73%
39%	45%	48%	45%	46%	44%
68%	76%	76%	71%	75%	75%

MCAS Grade 10 ELA Results

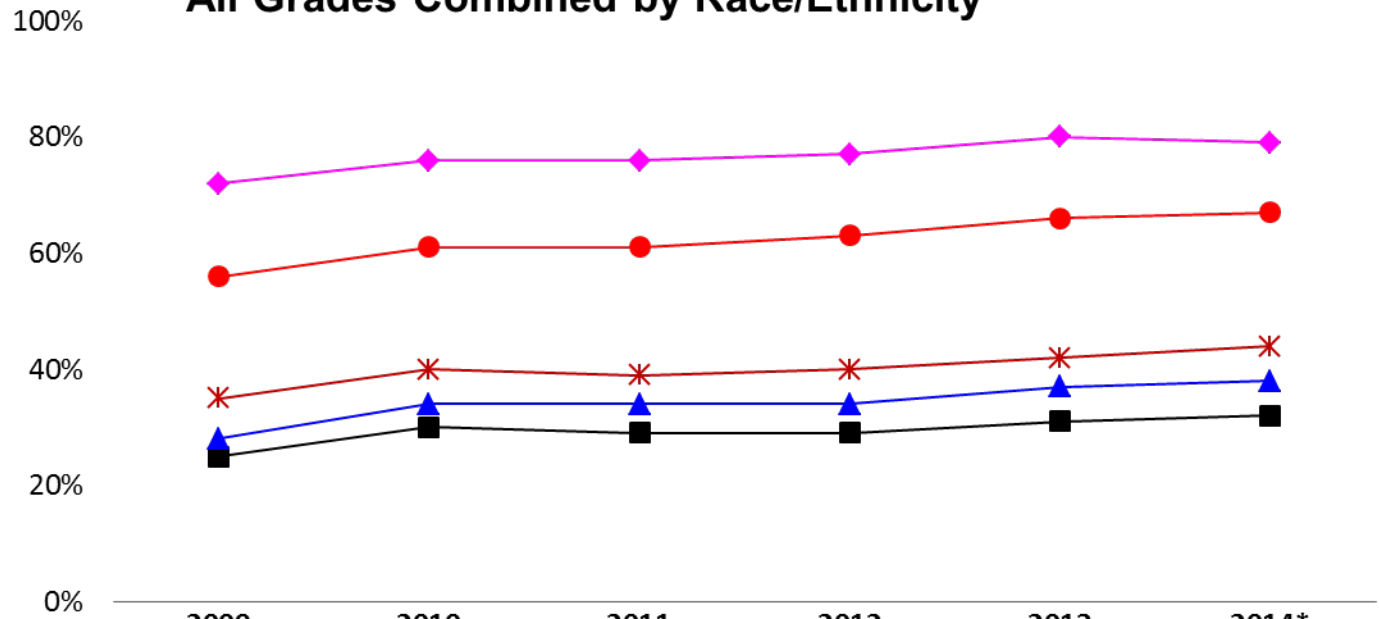


■ AA/Black
 ◆ Asian
 ▲ Latino/Hispanic
 ● White

2009	2010	2011	2012	2013	2014*
56%	53%	59%	69%	76%	70%
81%	80%	84%	90%	88%	87%
59%	54%	64%	67%	75%	70%
85%	78%	86%	88%	90%	92%

Achievement Gaps:

MCAS MATH Proficiency Rates: 2009 - 2014*
All Grades Combined by Race/Ethnicity

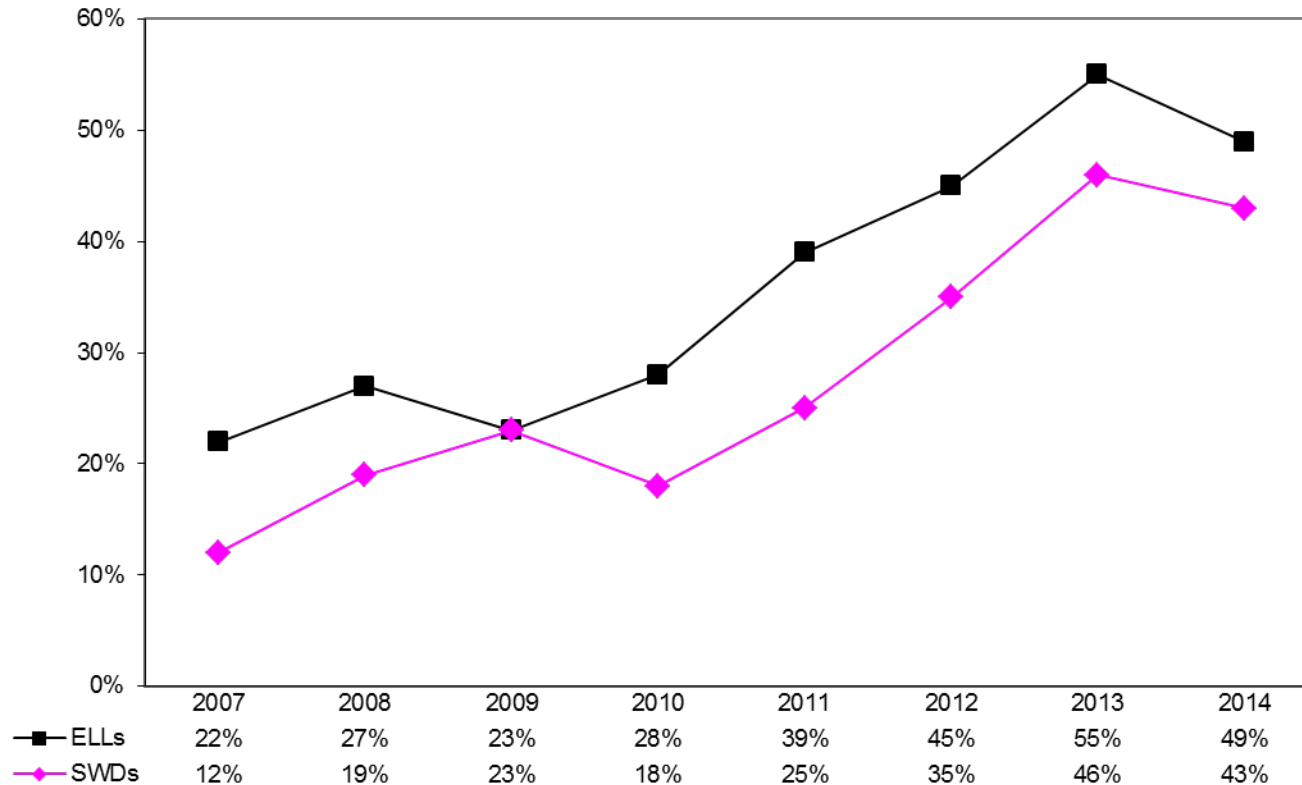


- *— DISTRICT
- AA/Black
- ◆— Asian
- ▲— Latino/Hispanic
- White

	2009	2010	2011	2012	2013	2014*
—*— DISTRICT	35%	40%	39%	40%	42%	44%
—■— AA/Black	25%	30%	29%	29%	31%	32%
—◆— Asian	72%	76%	76%	77%	80%	79%
—▲— Latino/Hispanic	28%	34%	34%	34%	37%	38%
—●— White	56%	61%	61%	63%	66%	67%

Students with Disabilities and ELLs: Grade 10 ELA

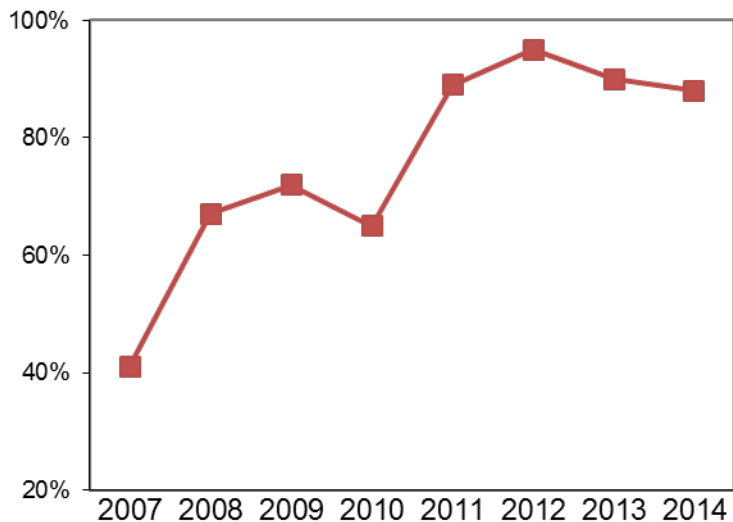
**MCAS ELA Results - Percent *Proficient/Advanced* -
English Language Learners and Students with Disabilities**





Progression of English Language Learners: Grade 10 ELA

MCAS ELA Results - Percent *Proficient/Advanced* - Former English Language Learners



— Grade 10 41% 67% 72% 65% 89% 95% 90% 88%

Performance of ELLs by English Language Development Level All Grades

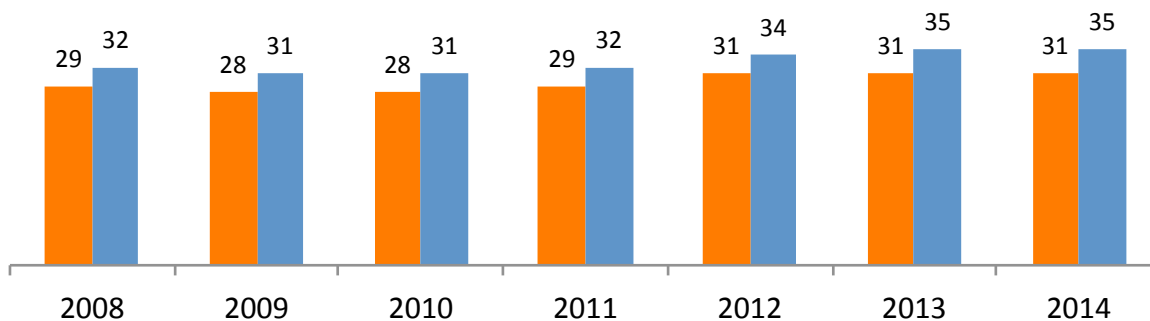
By ELD Level	Number	%Prof/ Adv	%W/F
1	59	0	92
2	343	1	83
3	1,240	6	59
4	2,534	16	32
5	2,348	39	12

Among former ELLs, 88% reached proficiency in ELA in 10th grade, compared to 41% in 2007

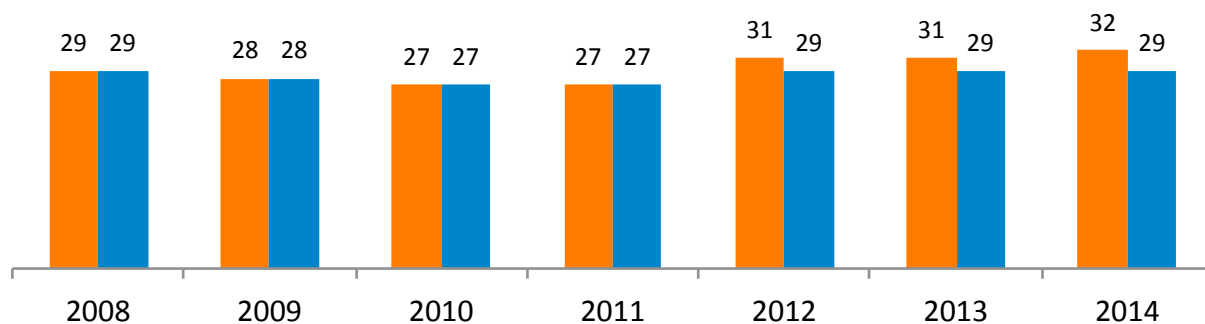
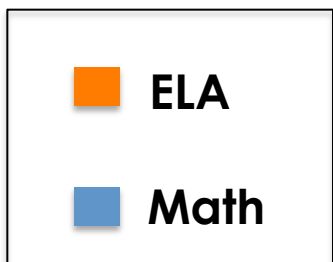


Proficiency gaps persist between Black and Hispanic students and White students

Gap in % Proficient/Advanced between Black and White Students

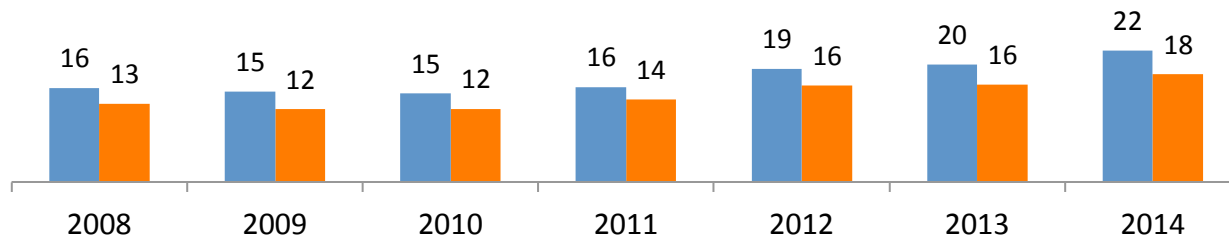


Gap in % Proficient/Advanced in ELA between Hispanic and White Students

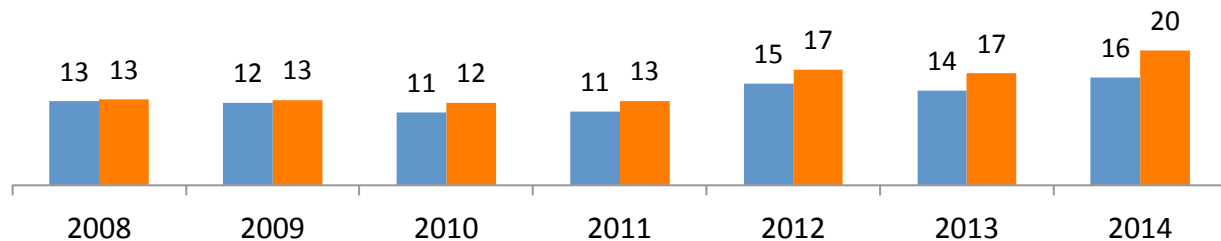
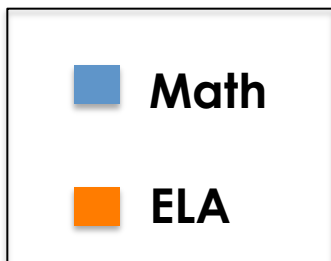


These gaps are smaller for students from the same socio-economic background, but they still remain

Gap in % Proficient/Advanced between AfAm and White Students- Low Income Students Only



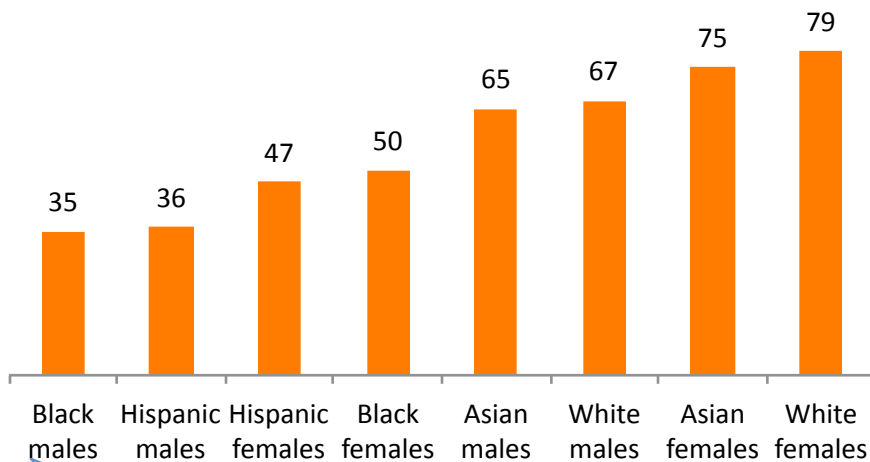
Gap in % Proficient/Advanced between Hispanic and White Students- Low Income Students Only



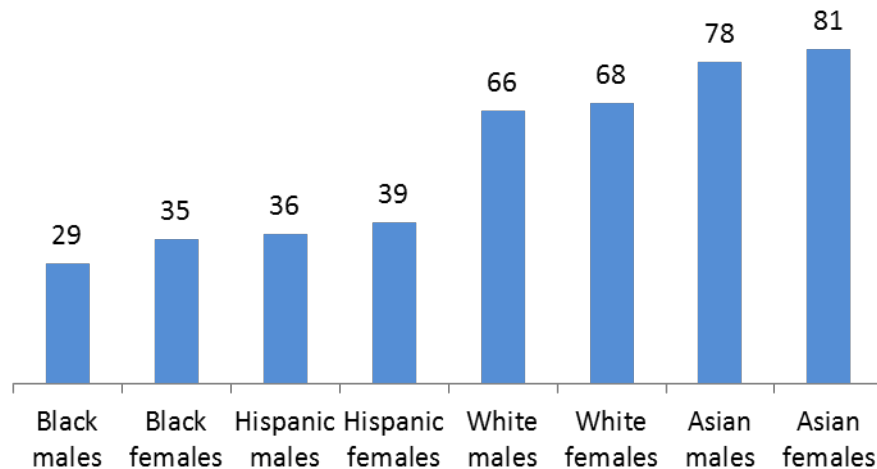


Achievement gaps for Black and Hispanic male students

ELA proficiency rates by race and gender



Math proficiency rates by race and gender



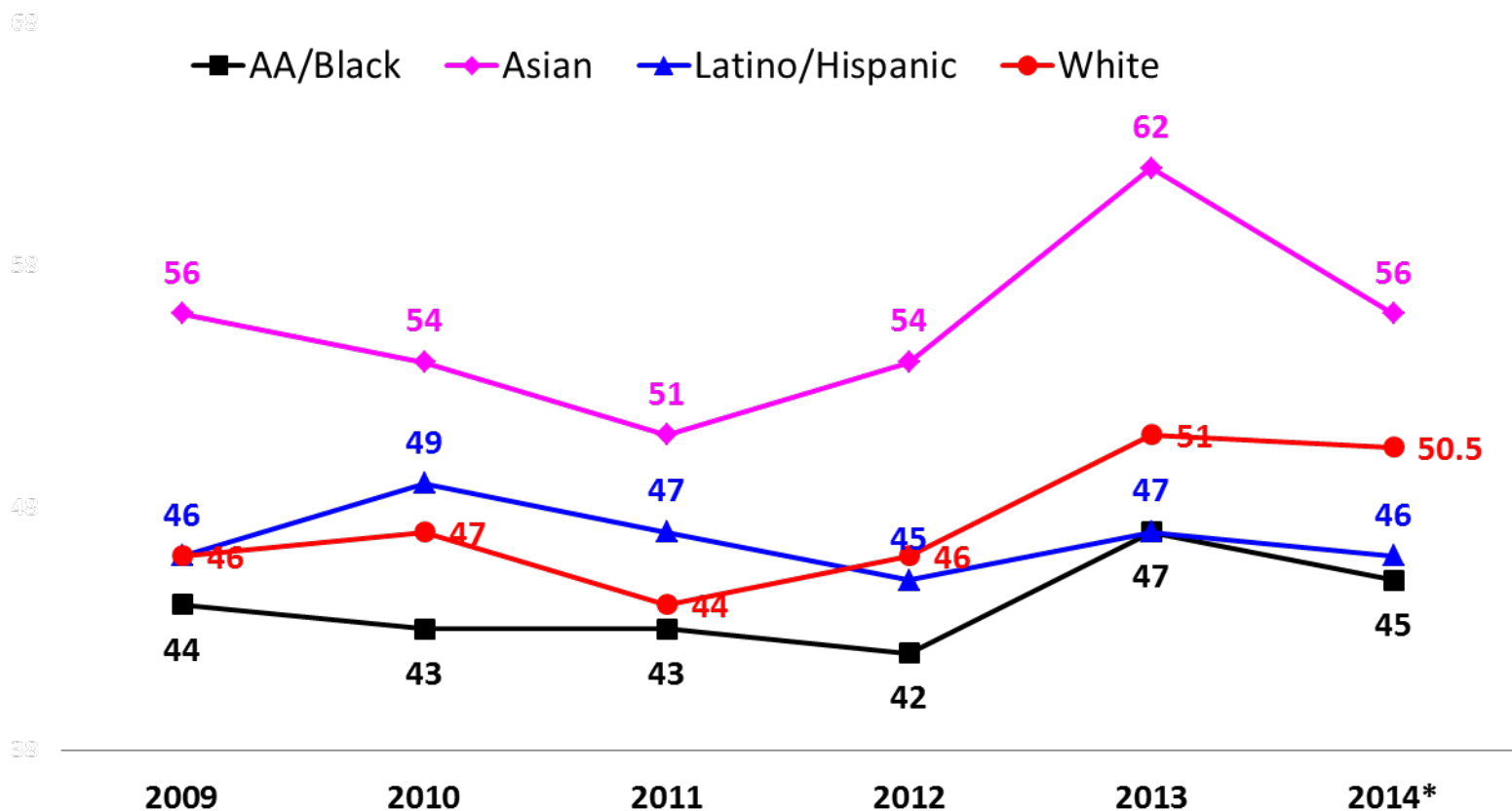
Proficiency rates for Black males are the lowest of any race/gender group

Proficiency rates for Black males are less than half the rates for White and Asian females



Gaps are also evident in the growth rates of students in different racial/ethnic groups

**MCAS ELA Median Student Growth Percentile (SGP): 2009 - 2014
All Grades Combined by Race/Ethnicity**



Commendation Schools

Conley Elementary: For narrowing proficiency gaps. Hispanic students at the Conley, who make up 38% of the population, were at the 95th percentile in ELA (50% Proficient/Advanced); and at the 97th percentile in Math (56% Proficient/Advanced)

Hurley K-8: For narrowing proficiency gaps. The Hurley is a Spanish / English immersion school; 60% of its 344 students are ELLs. In ELA, 47% of ELLs reached Proficiency, placing them at the 80th percentile statewide.

UP Academy Boston: For high growth. In Math, Low Income students at Up Boston were in the 97th percentile statewide (61% Prof/Adv); Students With Disabilities were at the 92nd percentile (37% Prof/Adv); African American students were at the 97th percentile (54% Prof/Adv); and Hispanic students were at the 91st percentile (63% prof/Adv).

Other notable improvements

Burke High School: Pending exit assurances, the Burke will become the first high school to exit Level 4 status and become a Level 3 school. The school had the third largest gain in mathematics in BPS, with a 15.6-point jump in the Composite Performance Index (CPI) to 87.1. ELLs at the Burke are at the 90th percentile in Math.

Boston International High School: has been designated a Level 1 school, up from Level 3 status last year. The large ELL population at this school (90%) had a CPI of 93.4 in Math, placing them at the 95th percentile statewide.

Hale Elementary: has been designated a Level 1 school this year, up from Level 2 last year. In Math, High Needs and African American students scored at the 91st and 95th percentile respectively.

Russell Elementary: has been designated a Level 1 school, up from Level 3 last year. Hispanic students make up 56% of the school's population. In Math, these students were at the 80th percentile statewide (53% Prof/Adv). The Russell is one of 3 schools in the EdVestors Improving Schools Initiative, and also receives support from Dr. Maria Brisk of Boston College.

Schools with notable achievement in ELA

Schools with CPI gains greater than 5 points

Gardner K-8 Pilot	8.7
Mozart	8.3
Dever	7.3
BTU K-8 Pilot	7.3
Higginson/Lewis K-8	7.2
Mendell	6.9
Haley (K-6)	6.9
Guild	6.1
Kennedy, J.F.	6.1
Irving	5.9
Grew	5.8
McKay K-8	5.7
Ellis	5.6

Schools with Median SGP greater than 60

UP Acad Dorch	82
Eliot K-8	75
Guild	71
UP Acad Boston	70
Hale	69.5
Russell	65
Tynan	63.5
Philbrick	61
Henderson	61
Mather	60.5



Schools with notable achievement in Math

Schools with CPI gains greater than 5 points

BDEA	18.7	Dever	8.8	Hale	6.7
Mozart	15.7	Manning	8.7	Excel	6.4
Burke	15.6	BTU K-8 Pilot	8.4	Urban Science	6.4
Channing	10.5	Tynan	8.3	Chittick	6.3
King K-8	9.7	Kennedy, J.F.	8.1	McKay K-8	6.3
Guild	9.7	ACC	7.4	Boston Intl	6.2
CASH	9.0	Brighton	7.4	Ellis	5.7
Great Egleston	8.9	Lee K-8	7.3		

Schools with Median SGP greater than 60

UP Acad Dorch	94	CASH	71.5	Dever	64
UP Acad Boston	88	Kennedy, P.J.	68	Young Achievers K-8	64
Manning	87	Adams	68	Ellis	63
Eliot K-8	76	Tynan	67	Otis	63
New Mission	73	Burke	65	Fenway	62.5
Hale	72	BTU K-8 Pilot	65	ACC	62
Clap Innovation	72	McCormack	65	Warren/Prescott K-8	62
Muniz Academy	72	Conley	65	English	60
Guild	71.5	Dearborn	65		

New Level 4 Schools

Dorchester Academy: ELA scores place the school in the 4th percentile statewide; in math, the school is in the 5th percentile. Overall, compared to other high schools across the state, Dorchester High is in the 1st percentile.

Grew Elementary: The ELA proficiency rate is 28%; in Math, it is 32%, placing the school at the 9th and 4th percentiles respectively. Overall, the school is in the 1st percentile.

Appendix A
Accountability and Assistance Levels Changes
From 2013 to 2014 (as of 09/19/14)

2014 2013	No Level / Insufficient Data (N=17)	Level 1 (N=15)	Level 2 (N=24)	Level 3 (N=58)	Level 4 (N=8)	Level 5 (N=2)
No Level / Insufficient Data (N=20)	Baldwin ELC East Boston EIM Umana Acad BATA Great Egleson Middle Sch Acad Beethoven Haynes EEC TechBoston Carter Higginson*** W Roxbury Acad Community Acad Lee Academy West Zone ELC Dudley Neigh M Muniz Acad		Ellison/Parks	Boston Green Lyon 9-12 UP Dochester*** NOTE: IN DETERMINING THE LOWEST 20% OF SCHOOLS FOR LEVELS 3 AND 4, DESE CONSIDERS 4 YEARS OF DATA AND WEIGHS PERFORMANCE 3 TIMES MORE THAN GROWTH FOR NON- HIGH SCHOOLS ; FOR HIGH SCHOOLS : ACHIEVEMENT WEIGHS 50% , GROWTH AND HIGH SCHOOL INDICATORS EACH WEIGH 25% .		
Level 1 (N=22)		Boston Latin Henderson Bos Latin Acad Hurley** Clap Kennedy, P J. Conley** Manning Eliot New Mission Fenway UP Boston*	Kennedy Health Quincy Murphy Roosevelt O'Byrant Sumner Otis Orchard Gardens Philbrick	Trotter		
Level 2 (N=12)		Hale	Bates Lydon Bradley Lyon K-8 Hernandez Ohrenberger Horace Mann Taylor Kilmer Warren/P rescott	Mason		
Level 3 (N=61)		Boston Intl Russell	BCLA BTUK-8 Pilot Guild Lee	ACC Edwards Irving Mozart Adams Ellis Jackson/Mann O'Donnell BDEA Everett Kennedy, J.F. Perkins Boston Arts Excel Kenny Pery Blackstone Frederick King K-8 Quincy Upper Brighton Gardner Pilot Madison Park Rogers Burke### Greenwood, S. Mather Snowden CASH Haley McCormack Timilty Charlesown Harbor McKay Tobin Chittick Harvard/Kent Mckinley Tynan Condon Hennigan Mendell Winship Curley K-8 Higginson/Lewi: Mildred Avenue Urban Science East Boston Holmes Mission Hill Young Achievers Edison K-8	Dorchester Acad Grew	
Level 4 (N=7)					Channing# Dearborn## E. Greenwood English Mattahunt Winthrop#	
Level 5 (N=2)						Dever* Holland*

Note: Accountability status indicates change from 2013 to 2014. School in *italic* are in-district Horace Mann Charter Schools.

Level 4 schools identified in 2013. ## School under review ### Pending approval of Level 4 exit assurances

*Schools classified into Level 5 in 2014.

**School Commended for narrowing proficiency gap

*** UP Academy Dochester (formerly Marshall) and Higginson were newly open in SY 2013-14.

**** School Commended for high growth

Appendix B: 2014 MCAS by Network

	% Adv/ Prof	%Adv	%Prof	%NI	%W/F	Mean CPI	N Included	Median SGP	N Included in SGP
Network A									
ELA	47%	6%	42%	37%	16%	76	3320	52	2354
Math	49%	19%	31%	30%	21%	74	3332	53	2378
Network B									
ELA	35%	3%	31%	41%	24%	67	2543	43	1821
Math	35%	10%	26%	35%	29%	65	2554	47	1829
Network C									
ELA	37%	3%	33%	38%	25%	68	3632	54	2593
Math	36%	12%	25%	32%	31%	65	3671	58	2632
Network D									
ELA	37%	6%	31%	37%	26%	68	3249	44	2293
Math	35%	14%	21%	30%	35%	62	3281	48.5	2314
Network E									
ELA	46%	7%	39%	37%	17%	75	3702	48	2662
Math	38%	14%	24%	34%	28%	66	3724	48	2691
Network F									
ELA	40%	5%	35%	37%	23%	73	3361	50	2328
Math	36%	12%	24%	31%	33%	67	3375	49	2334
Network G									
ELA	78%	17%	61%	17%	5%	91	6214	44	5104
Math	64%	32%	31%	24%	13%	82	6228	47	5146