



Spring 2015 MCAS Results: Grade 10



10th Grade Proficiency Rates: English Language Arts, Math & Science

10th Grade % Proficient & Advanced on MCAS

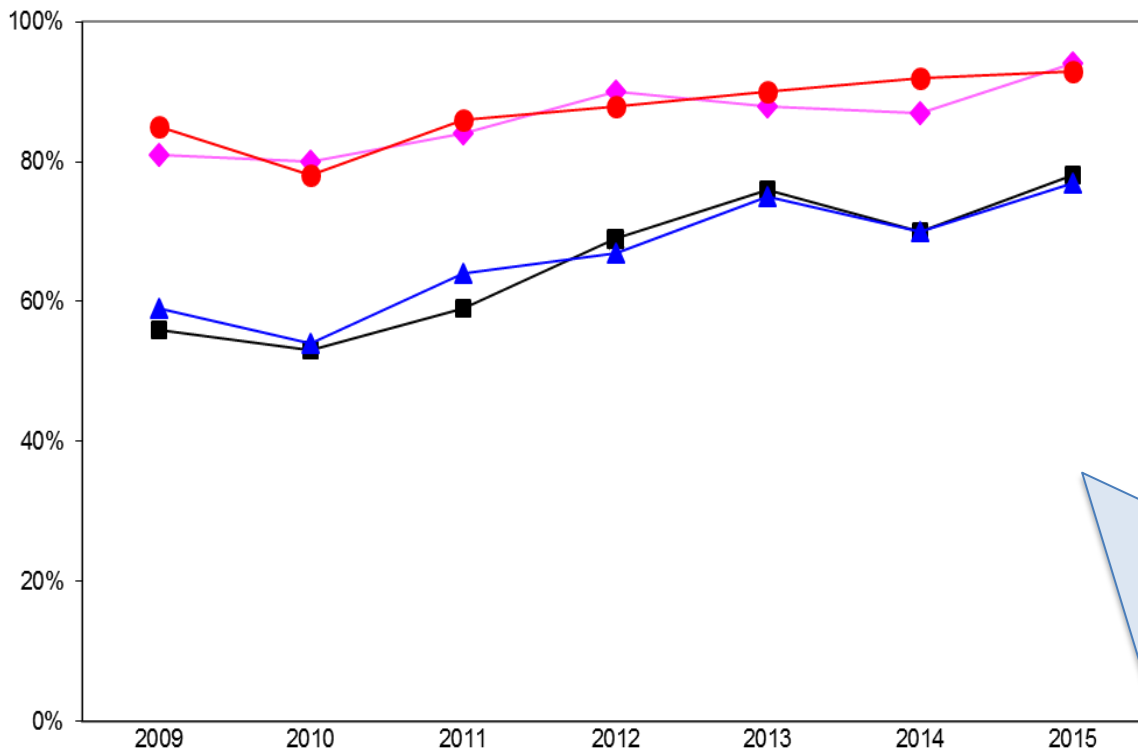
	BPS									State		
	2009	2010	2011	2012	2013	2014	2015	2015-2014 Change	7-Year Trend	2015	2015-2014 Change	7-Year Trend
ELA	64%	60%	67%	73%	79%	76%	82%	6%	18%	91%	1%	12%
Math	62%	60%	62%	65%	64%	64%	67%	3%	5%	79%	0%	4%
Science	34%	37%	39%	45%	49%	47%	50%	3%	16%	72%	1%	11%

- Gains for all students in BOTH 10th Grade ELA, Math & Science
- Gains in ELA are substantially greater than those found in Math and Science
- Within 9 points of the State (ELA) and 12 points (Math)



Achievement Gaps: 10th grade ELA

MCAS Grade 10 English Language Arts Percent Proficient & Advanced By Racial/Ethnic Group



■ AA/Black	56%	53%	59%	69%	76%	70%	78%
◆ Asian	81%	80%	84%	90%	88%	87%	94%
▲ Latino/Hispanic	59%	54%	64%	67%	75%	70%	77%
● White	85%	78%	86%	88%	90%	92%	93%

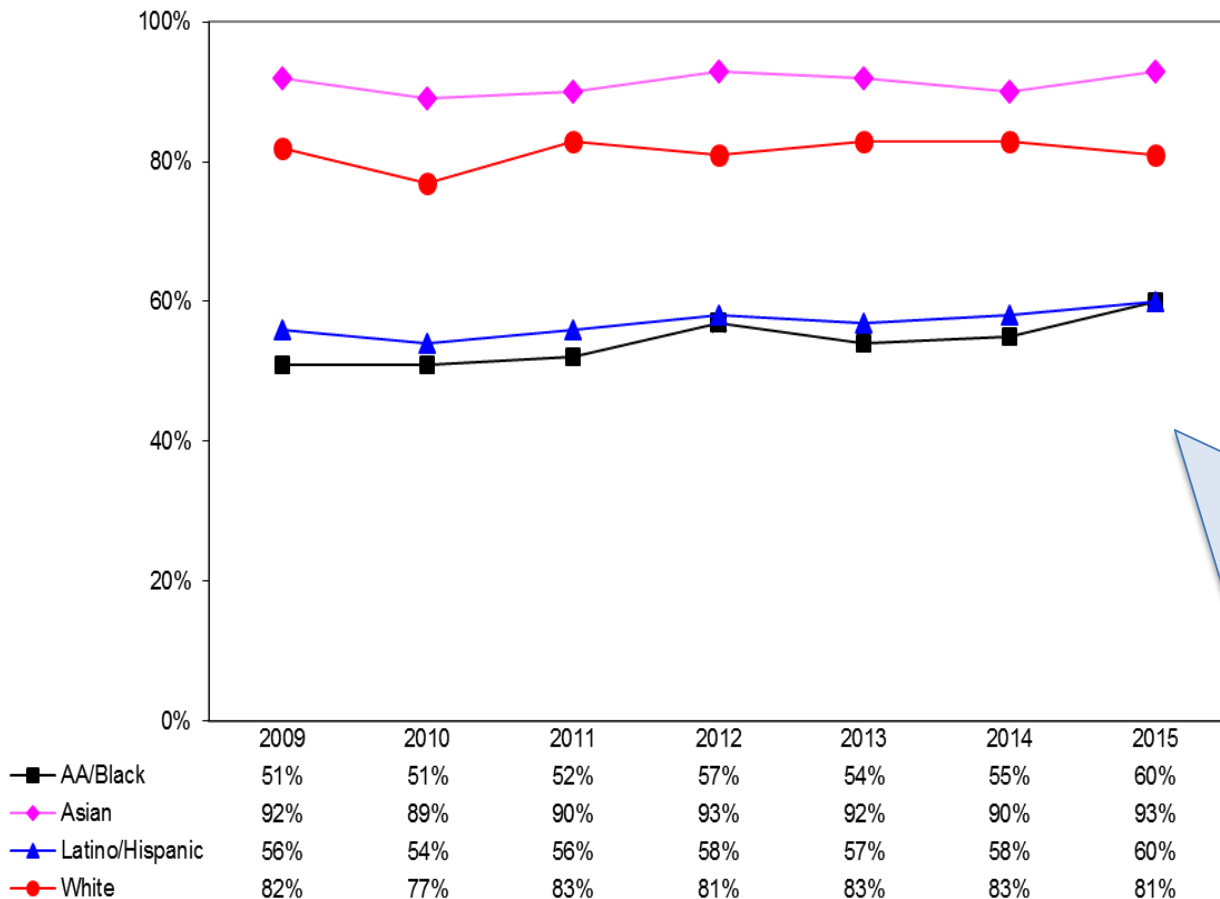
While we see ELA gains for all 10th grade students in BPS over the course of the past 7 years, the gains are greater for African-American and Latino students (22% and 18% respectively) vs. White and Asian students (8% and 13% respectively). This represents a substantial narrowing of the achievement gap over the past 7 years.

* Note: 2015 results are based on August 2015 preliminary data.



Achievement Gaps: 10th grade Math

MCAS Grade 10 Mathematics Percent Proficient & Advanced
By Racial/Ethnic Group



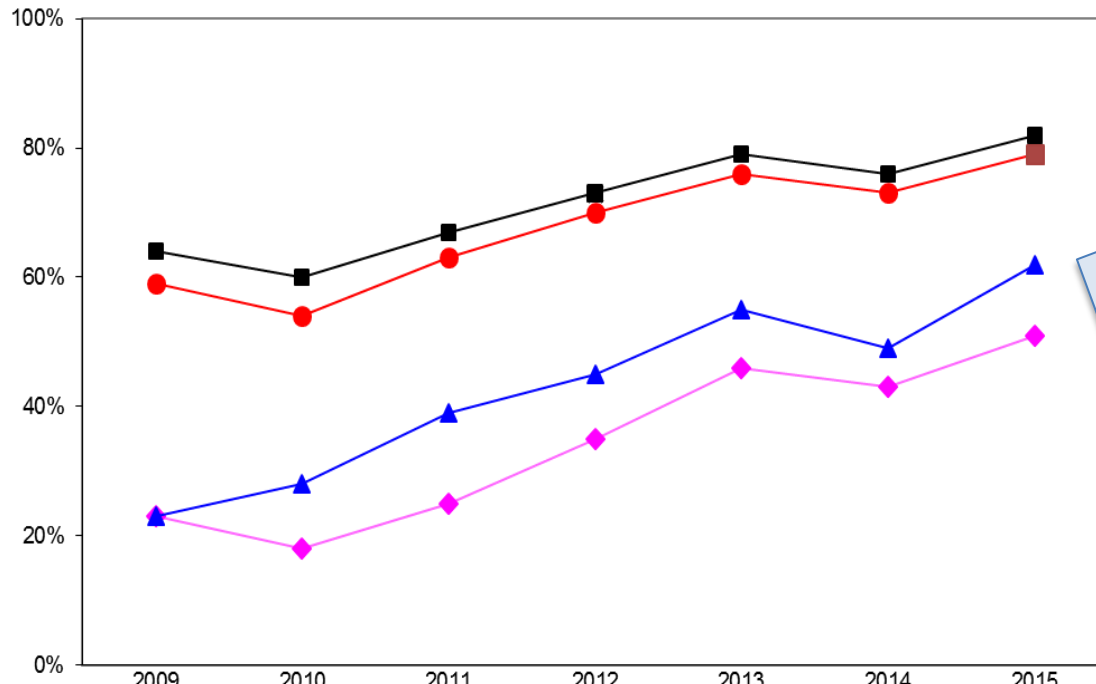
For Math, the gains have been less dramatic, though. Nevertheless, African-American 10th graders have shown an almost 10% gain in Math over the past 7 years. In fact, since 2013 African-American and Latino students have shown gains in Math even when other groups have not.

* Note: 2015 results are based on August 2015 preliminary data.



Students with Disabilities and ELLs: Grade 10 ELA

**MCAS Grade 10 English Language Arts Percent Proficient & Advanced
By Other Student Subgroup**



Additionally, we see gains in 10th grade ELA for ELL/former ELL students and Students with Disabilities that are more dramatic than for all 10th grade students in BPS.

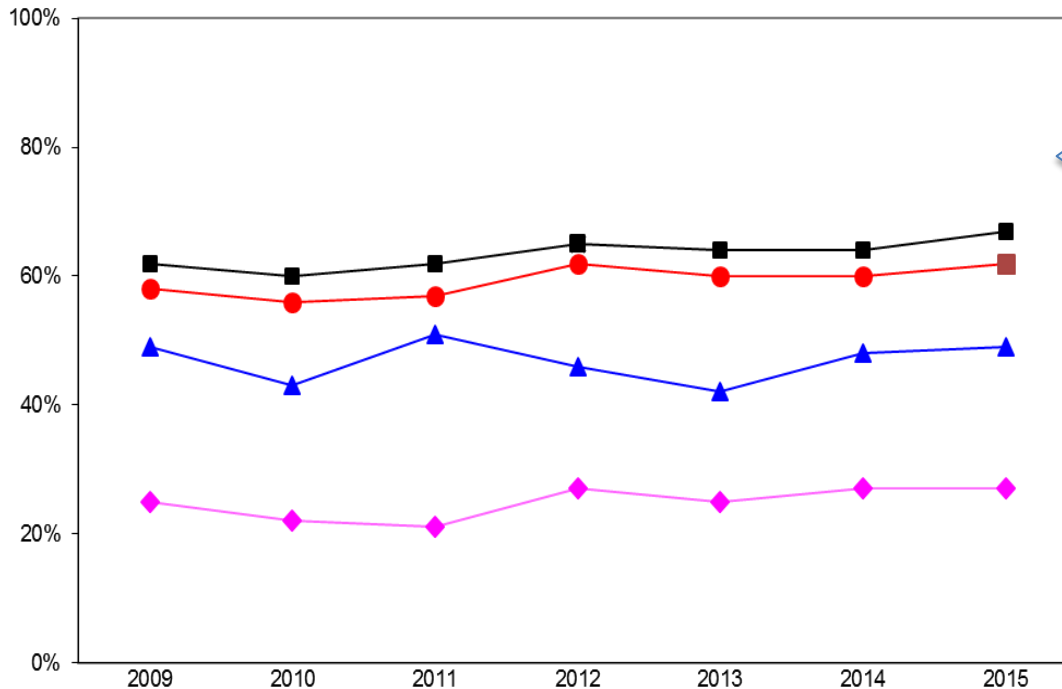
■ All Students	64%	60%	67%	73%	79%	76%	82%
◆ Students w/ Disab	23%	18%	25%	35%	46%	43%	51%
▲ ELL/Former ELL	23%	28%	39%	45%	55%	49%	62%
● Low Income	59%	54%	63%	70%	76%	73%	79%
■ Economically Disadvantaged							79%

* Note: 2015 results are based on August 2015 preliminary data.



Students with Disabilities and ELLs: Grade 10 Math

**MCAS Grade 10 Mathematics Percent Proficient & Advanced
By Other Student Subgroup**

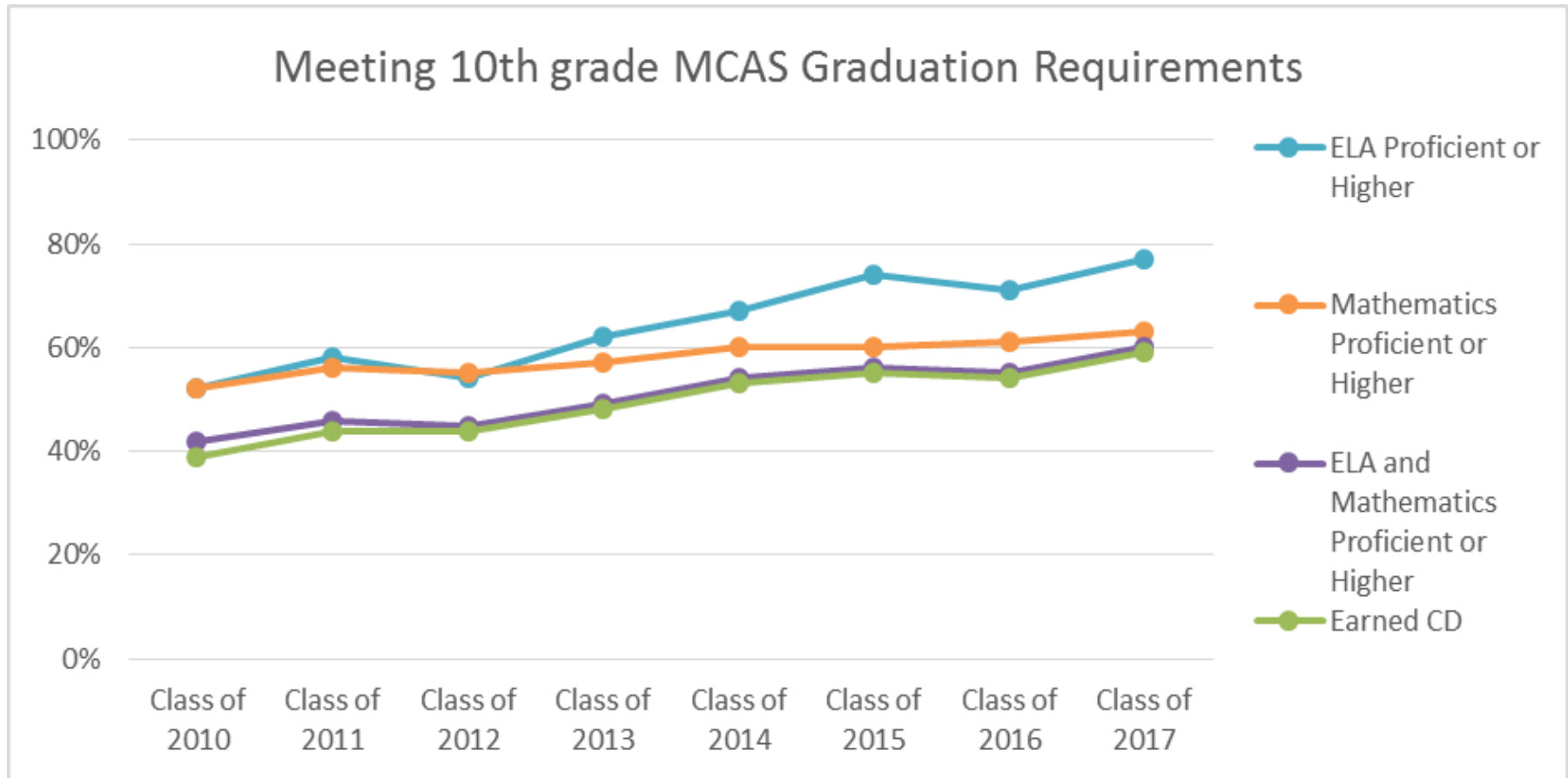


10th grade Math results, however, for these subgroups have not shown the same sort of growth.

- All Students
- ◆ Students w/ Disab
- ▲ ELL/Former ELL
- Low Income
- Economically Disadvantaged

* Note: 2015 results are based on August 2015 preliminary data.

10th grade MCAS graduation requirements



If we were able to achieve the gains with Math that we have in ELA, the percent of students in each graduating cohort earning / meeting graduation competency requirement in 10th grade would increase substantially, which would likely cause an increase in our 4-year cohort graduation rates as well.

Schools with notable CPI Scores and Gains: 10th Grade ELA

School	CPI Score	Increase from 2014
Boston International/Newcomers Academy	88.7	+ 12.8
McKinley School	79.0	+ 12.3
CASH	89.8	+ 8.6

Schools with notable CPI Scores and Gains: 10th Grade Math

School	CPI Score	Increase from 2014
Henderson Upper	90.0	+ 23.0
Snowden International	86.6	+ 6.9
Excel High School	82.4	+ 6.7

CPI: A measure of the extent to which students are progressing towards proficiency (a CPI of 100)

Schools with CPI Gains Greater than 2.5 Points*

ELA (15 Schools)	Math (10 Schools)
<ul style="list-style-type: none">• ACC• BCLA• BDEA• BINCA• Burke• CASH• East Boston• English• Excel• Kennedy Health Careers• Madison Park• McKinley School• Muniz Academy• Snowden International• West Roxbury Academy	<ul style="list-style-type: none">• ACC• BDEA• Boston Arts Academy• East Boston• Excel• Green Academy• Henderson Upper• Kennedy Health• McKinley School• Snowden International

* DESE defines meaningful gain as those greater than 2.5 points

Schools with notable SGP: 10th Grade ELA

School	SGP
Boston Latin School	64.0
Kennedy Health Careers	64.0
Muniz Academy	62.0

Schools with notable SGP: 10th Grade Math

School	SGP
Burke High School	74.0
Tech Boston Academy	73.5
Muniz Academy	98.0

SGP: Measures how much a student's performance has improved from one year to the next relative to his or her academic peers: other students statewide with similar MCAS test score history.



Other Highlights

School	Notes	Highlights
Boston International/Newcomers Academy	ELL's make up more than 80% of the population	<ul style="list-style-type: none"> • 66% of school scored Prof/Adv on ELA MCAS <ul style="list-style-type: none"> • Increase of 12.8 CPI points
Burke High School	Left turn around status last school year (14-15)	<ul style="list-style-type: none"> • Increased MCAS Science Proficiency rates by 18 percentage points (54% Prof/Adv) • 70% of school scored Prof/Adv on ELA MCAS <ul style="list-style-type: none"> • 8 point increase from 2014



Conclusion/Questions

- The district is committed to providing deeper analysis on:
 - 1st time test taker results – How many students complete their high school graduation requirements on the first attempt?
 - Science MCAS results including 5th, 8th, and 10th grade
- Questions?