

A photograph of two young children, a girl and a boy, hugging in a classroom. The girl is on the left, leaning her head against the boy's shoulder. The boy is on the right, smiling broadly. They are both wearing school uniforms. The background shows a classroom setting with other students and desks. The entire image is overlaid with a semi-transparent blue filter.

BPS School Reopening Working **DRAFT** PLAN

Boston Public Schools
July 22, 2020



Public Health Requirements:

- Social distancing (all 6 feet apart)
- Masks on all students and staff
- One student per row per bus
- No food in cafeterias
- Health protocols followed for bus & building sanitation and school nurse response to suspected exposure
- No group gatherings if community infection rates are outside of acceptable range



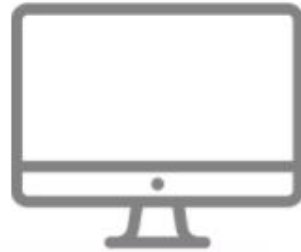
3 Required Plans:

- Fully Remote
- Hybrid
- All in Person

Dates:

- July 31st
- August 10th

Learning Models: A Continuum



Online Learning

learning remotely through an online platform



Blended Learning

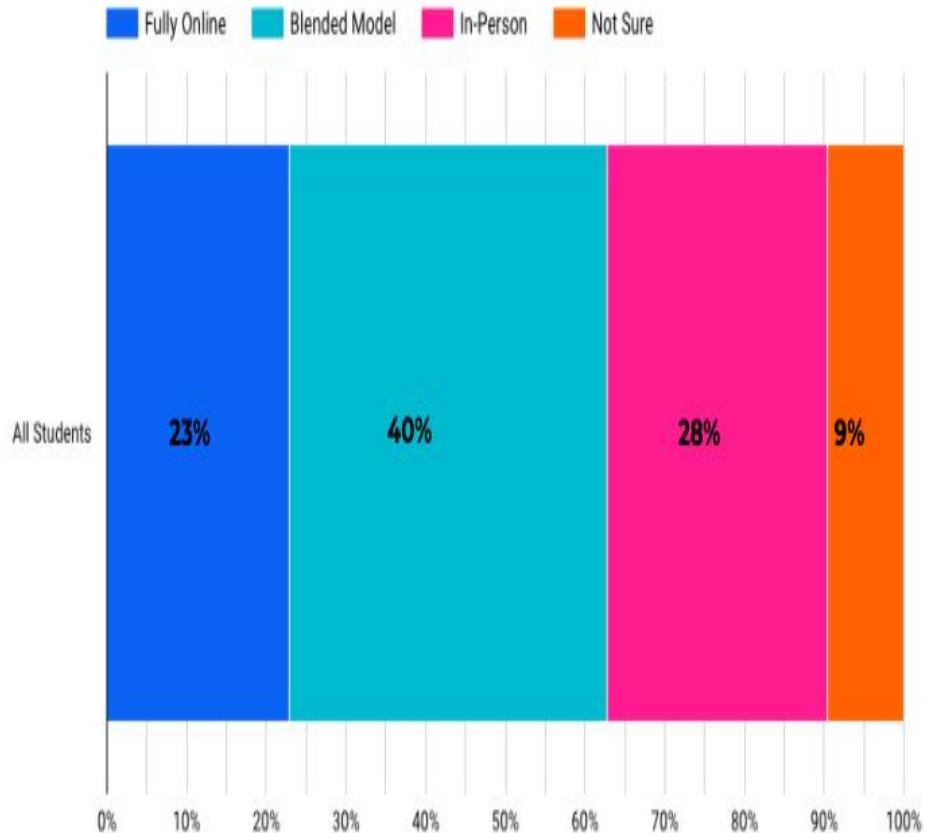
a combination of online and on-site learning



On-site Learning

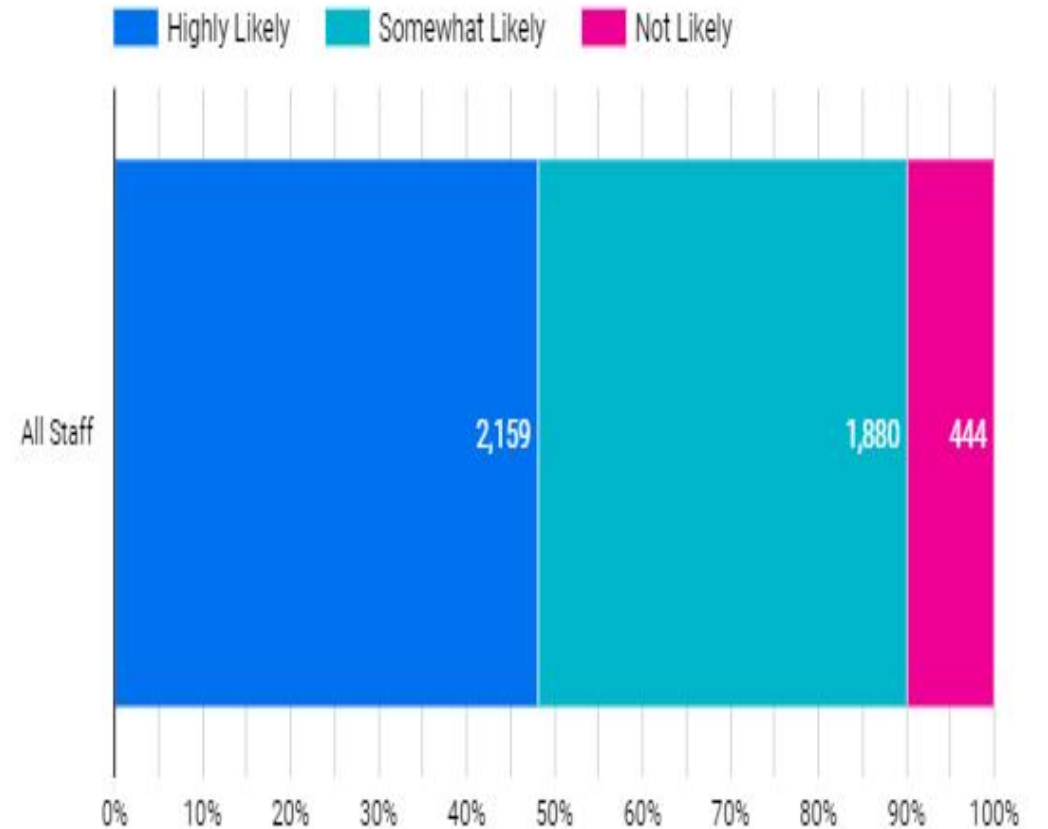
learning in-person in a school building

BPS Family Reopening Survey Results



If school reopens in the fall and students are expected to return to buildings with social distancing measures in place, what is the likelihood that you would choose to return to your position?

- Not likely (I will consider retiring / leaving)
- Somewhat likely (I expect to be there at this time)
- Highly likely (I am confident that I will return)



Guardrails



1. **Opt-in:** Parents can choose to have students stay remote if desired.
2. **Opt-out:** Parents can choose to opt out of bus transportation.
3. **Start Remote for All if Health Numbers Spike/Don't Stay Down:** Guidelines from BPHC must be met before we move to anything other than remote.
4. **And/or (no final decision yet made) Start with Blended/Hybrid Model if Health Numbers Allow.**

DRAFT Under Consideration...

Hopscotch Model

Teacher			
Group A Student	Group B Student	Group A Student	Group B Student
Group B Student	Group A Student	Group B Student	Group A Student
Group A Student	Group B Student	Group A Student	Group B Student
Group B Student	Group A Student	Group B Student	Group A Student

Description:

- 2 Days + 3 Days
- Group A in-person + Group B online - then switch
- Teachers teach remotely and in-person simultaneously.
- 6 feet of social distancing maintained
- Exceptions:
 - Special education rooms if all students can fit within social distancing requirements?
 - Maybe weeks (v days) in high schools?
- Supports as Needed:
 - Training on teaching both online and in-person
 - Tech tools (cameras; speakers; online programs)
 - Substitute pool
 - Paraprofessional assistance/training
 - Collaborative planning time

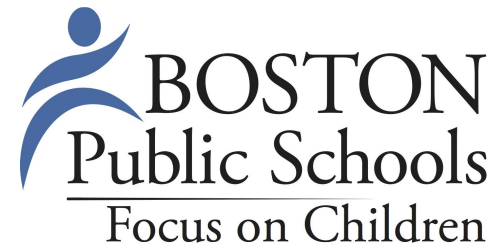
Next Steps

District:

- Discussing with union partners
- Learning from the BPS community
- Equity analysis ongoing
- Drafting District plan (guardrails) for sharing with school leaders

School Leaders:

- Working with their families, staff and community
- Building school-specific models to implement the District guardrails



Tammy Pust

Senior Advisor, Office of the Superintendent

tpust@bostonpublicschools.org