

# the **Boston** Basics

A stylized illustration of a family consisting of a woman on the left holding a baby, a small child in the middle, and a man on the right holding the child's hand. The woman and child are orange, and the man is yellow.

**Fun, Simple, and Powerful!**

Core Leadership Team:

Rahn Dorsey, Ron Ferguson, Jeff Howard, Wendell Knox, Barry Zuckerman

May 2016

[www.BostonBasics.org](http://www.BostonBasics.org)

# Founding Organizations

*Black  
Philanthropy  
Fund*

a learning and leadership community



The Achievement Gap Initiative at Harvard University

*Toward Excellence with Equity*



Boston Mayor's Office



The campaign emerged from a community process that the Black Philanthropy Fund convened. A cadre of active partner organizations is growing (see below).

## Three compelling facts:

- 80% of brain growth happens in the first three years.
- Racial, ethnic, and socio-economic skill gaps are very clear in national data by the age of two.
- Science is clear about the types of lived experiences in the first three years that really make a difference!

We face a moral imperative to act.

# The Boston Basics

The Achievement Gap Initiative at Harvard University convened a national scientific conference that led to a national advisory committee. The five Boston Basics components emerged from that process. The components have also been approved through a series of meetings attended by many of Boston's leading early childhood organizations and experts. The latter group agreed that most existing early childhood work fits within the Boston Basics categories and should be unified through the Boston Basics Campaign.



**MAXIMIZE LOVE, MANAGE STRESS**



**TALK, SING, AND POINT**

**123**

**COUNT, GROUP, AND COMPARE**



**EXPLORE THROUGH MOVEMENT AND PLAY**



**READ AND DISCUSS STORIES**

Every infant and toddler needs to experience the Boston Basics



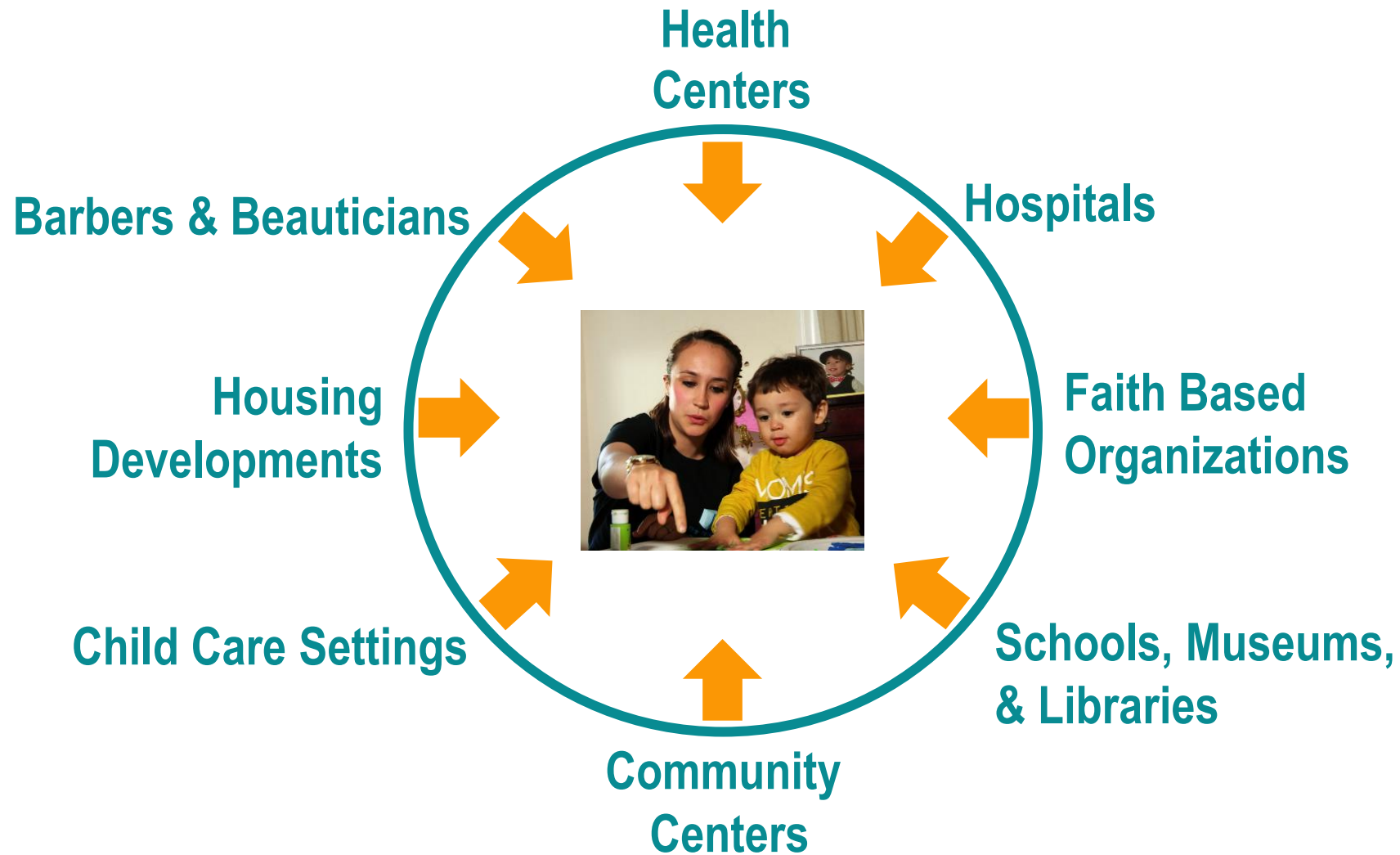
Saturate the community  
with the Boston Basics.

Make *life* the program!

Help families experience  
*positive reinforcements*  
*from every direction*  
for doing the Boston Basics



# Socio-Ecological Saturation



# Active Partner Organizations as of April 2016

## **Boston Centers for Youth and Families**

- All Community Centers

## **Boston Public School Department**

- Countdown to Kindergarten

## **Libraries and Museums**

- Boston Children's Museum

## **Dudley Street Neighborhood Initiative**

## **Family & Early Childhood Providers**

- ABCD Head Start & Children's Services
- Boston Family Engagement Network
- Boston NAACP
- Children's Services of Roxbury
- Dudley Street Neighborhood Initiative
- East Boston Family Engagement Network
- East Boston Social Centers
- Family Nurturing Center

- Kennedy Center
- Mattapan Family and Community Network
- Project Hope
- ReadBoston
- South Boston Neighborhood House
- Thom Child and Family Services
- Urban Pride
- United South End Settlements

# Active Partner Organizations, continued

## Hospitals

- Brigham and Women's Hospital
- Boston Medical Center
- Children's Hospital
- MGH

## Housing

- MassHousing

## Churches

- Bethel AME
- Congregation Lion of Judah

## Boston Public Health Commission

- Healthy Baby/Healthy Child home visitors

## Community Health Centers

- Brookside Community Health Center
- Codman Square Health Center
- Dimock Community Health Center
- Martha Eliot Health Center
- Mattapan Community Health Center
- Southern Jamaica Plain Health Center
- Whittier Street Health Center



# POTENTIAL BPS COLLABORATIONS

- Parent University Courses
- BB Referrals to Play-to-Learn Groups
- Potential Trend Analysis on Readiness Scores
- Collaboration with Parent Engagement Network
- Count Down to Kindergarten (already active)

# Boston Basics Toolkit

- Videos
- Posters
- Booklets
- Baseline Survey on Beliefs
- Train the Trainer Protocols
- Parent Workshop
- Facilitator Training for Parent Workshop
- Website: [www.BostonBasics.org](http://www.BostonBasics.org)
- App (forthcoming)

# Face-to-Face Dissemination and Supports

- **Well-Baby Health Care Visits**
- **Adult Check-Ups**
- **Counseling Groups**
- **Home Visits**
- **Trainings for Parents, Extended Family Members, Others**
- **Prenatal Training**
- **Briefings when Leaving the Hospital with the Newborns**
- **Professional Development for Early-Childhood Caregivers**
- **Sermons**
- **Celebrations**
- **Parent Groups & Care Circles**

# EVALUATION

## Impact Metrics

### 1. Beliefs and Awareness (800 done since July)

- Forced Choice Surveys
- Open Ended Questions

2. **Well-baby metrics.** We need help from providers and advisers to determine what is logistically and financially feasible.

### 3. Pre-School Readiness Scores (BPS)

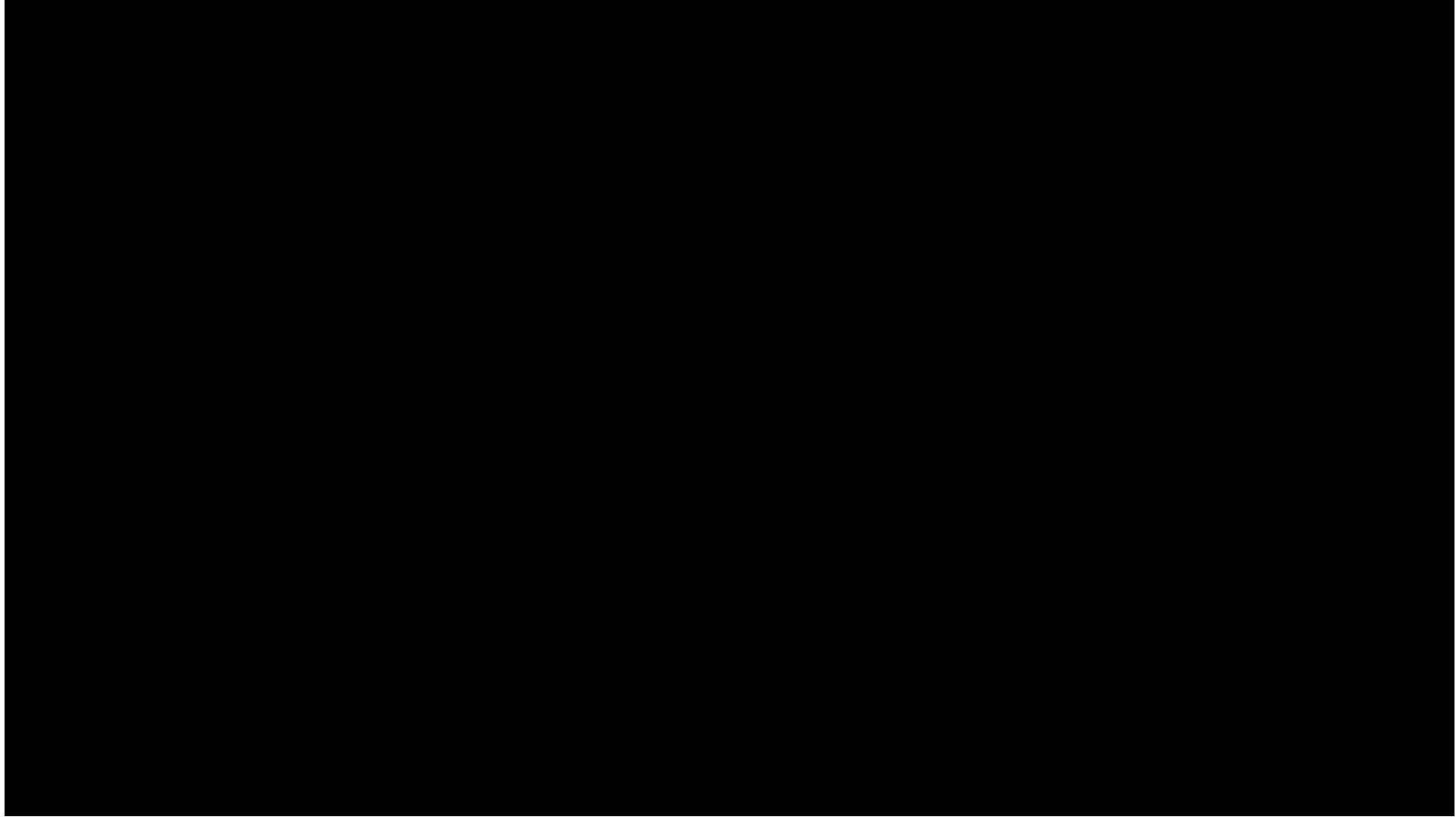
### 4. Kindergarten Readiness Scores (BPS)

### 5. Changes in parenting behaviors

## Research Methods

- Interrupted Time-Series** (Projections of pre-implementation trends serve as counterfactuals; 800 pre-implementation surveys have been completed over six months in the Boston Promise Neighborhood)
- Randomized Experimental Trials.** It remains to be determined whether there will be opportunities to embed randomized trials into the roll out, but it should at least be possible to do comparisons that are quasi-experimental (i.e., with nonrandomized comparisons).
- Quasi-Experimental Analyses re Effectiveness of:**
  - Videos and protocols that are currently under development for use by clinicians;
  - Other discussion group protocols;
- Descriptive and Trend Analyses.** Patterns in parent self-monitoring of Boston Basics parenting behaviors reported electronically.

# The English Language Overview Video (Spanish also available.)



*None of us can do alone what all of us can do together.*



**Fun, Simple, and Powerful!**

Join and find materials at [www.BostonBasics.org](http://www.BostonBasics.org)

Have questions? Contact Jocelyn Friedlander at 617-496-9154.