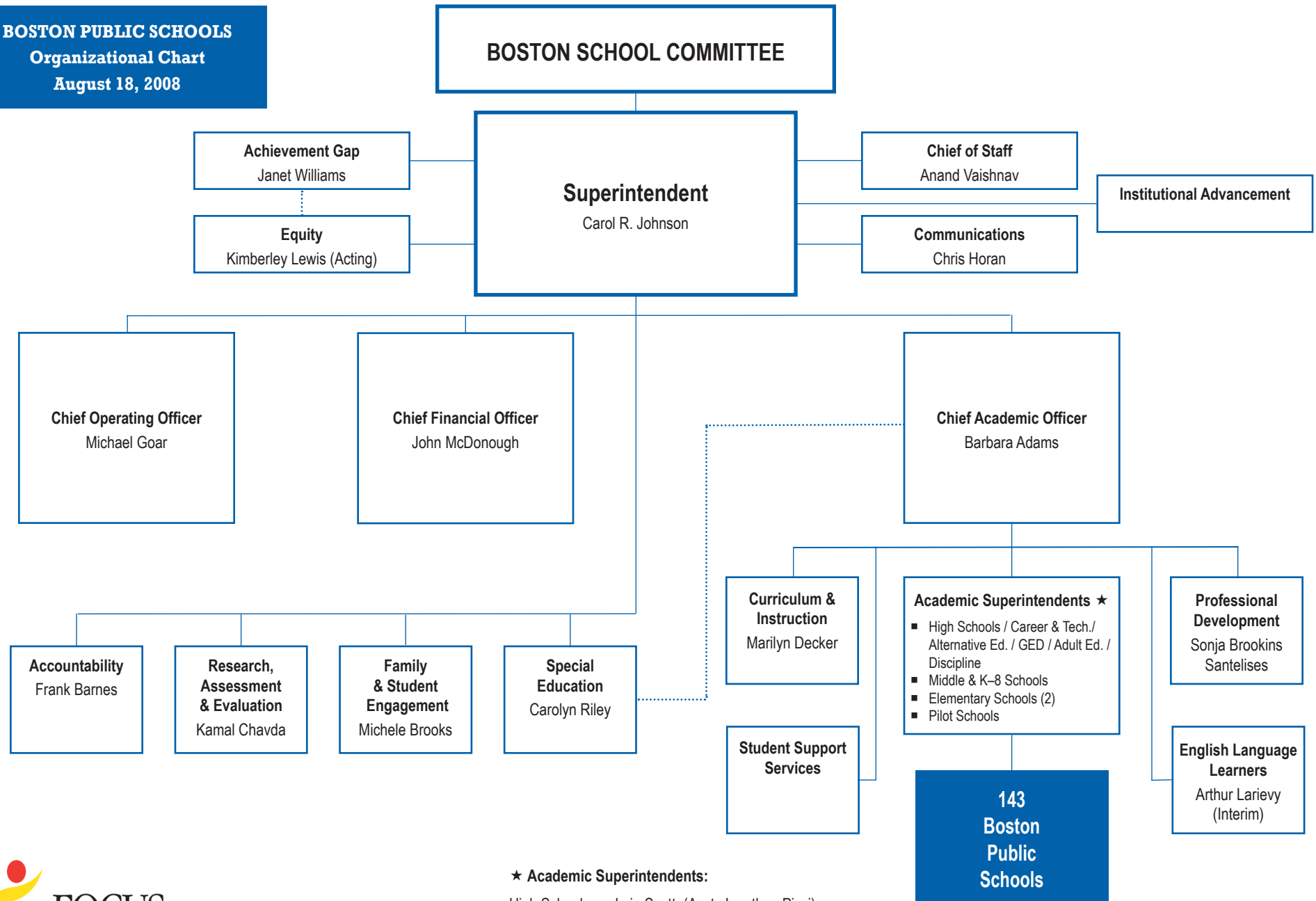


**BOSTON PUBLIC SCHOOLS**  
**Organizational Chart**  
**August 18, 2008**



★ Academic Superintendents:

High Schools: Irvin Scott (Asst. Jonathan Pizzi)  
 Middle & K-8: Elliot Stern (Asst. Carrie Hickey)  
 Elementary: Victoria Megias-Batista | Mary Nash  
 (Asst. Joe Shea) (Asst. Al Taylor)  
 Pilot Schools: Janet Palmer-Owens (Asst. Mary Skipper)